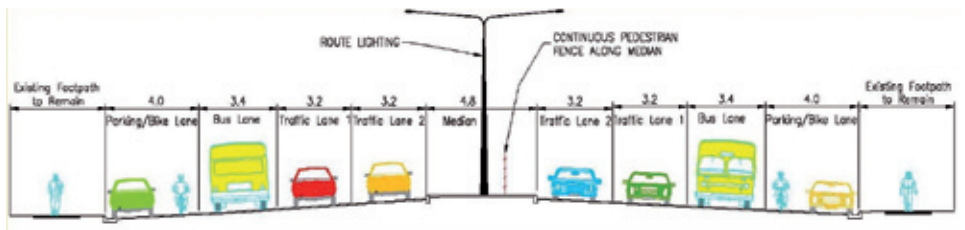


Gold Coast Highway Broadbeach to Miami Road upgrade & bus lanes preparing to roll out Stage 1

Work is starting on a major upgrade of the Gold Coast Highway between Broadbeach and Miami that will improve traffic flow and road safety for everyone, on wheels or on foot. This project will deliver continuous bus lanes along the main spine route of the public transport network, to support more frequent and reliable bus services.

All six lanes will be completely resurfaced and upgraded with new traffic signals, line markings and street lighting. The central median will be fenced for safety, to bring all pedestrian and vehicle crossings under the control of traffic signals.

The improvements will benefit locals and visitors alike, increasing the carrying capacity for people to travel this route. It will be a whole new era in the life of this road and the coastal communities it links.



With a current allocation of \$21 million this project has been prioritised in the South East Queensland Infrastructure Plan and Program (SEQIPP) and the TransLink Network Plan to promote growth of public transport on the Gold Coast.

Main Roads is working closely with the Gold Coast City Council and TransLink to ensure this road upgrade fits with planning for other services and utilities in this area.

Stage 1 - Pacific Fair Drive at Broadbeach to Hilda Street in Mermaid Beach

At a cost of \$10 million, the first stage will upgrade four signalised intersections and deliver continuous bus lanes on either side of the four general traffic lanes. Cyclists will share the 4 metre wide parking lane.

Preliminary works for Stage 1 will start in November before the full upgrade starts rolling out in February 2008.

- » Inside pages: The project plan Stage 1
- » Back page: What to expect during construction

Timelines

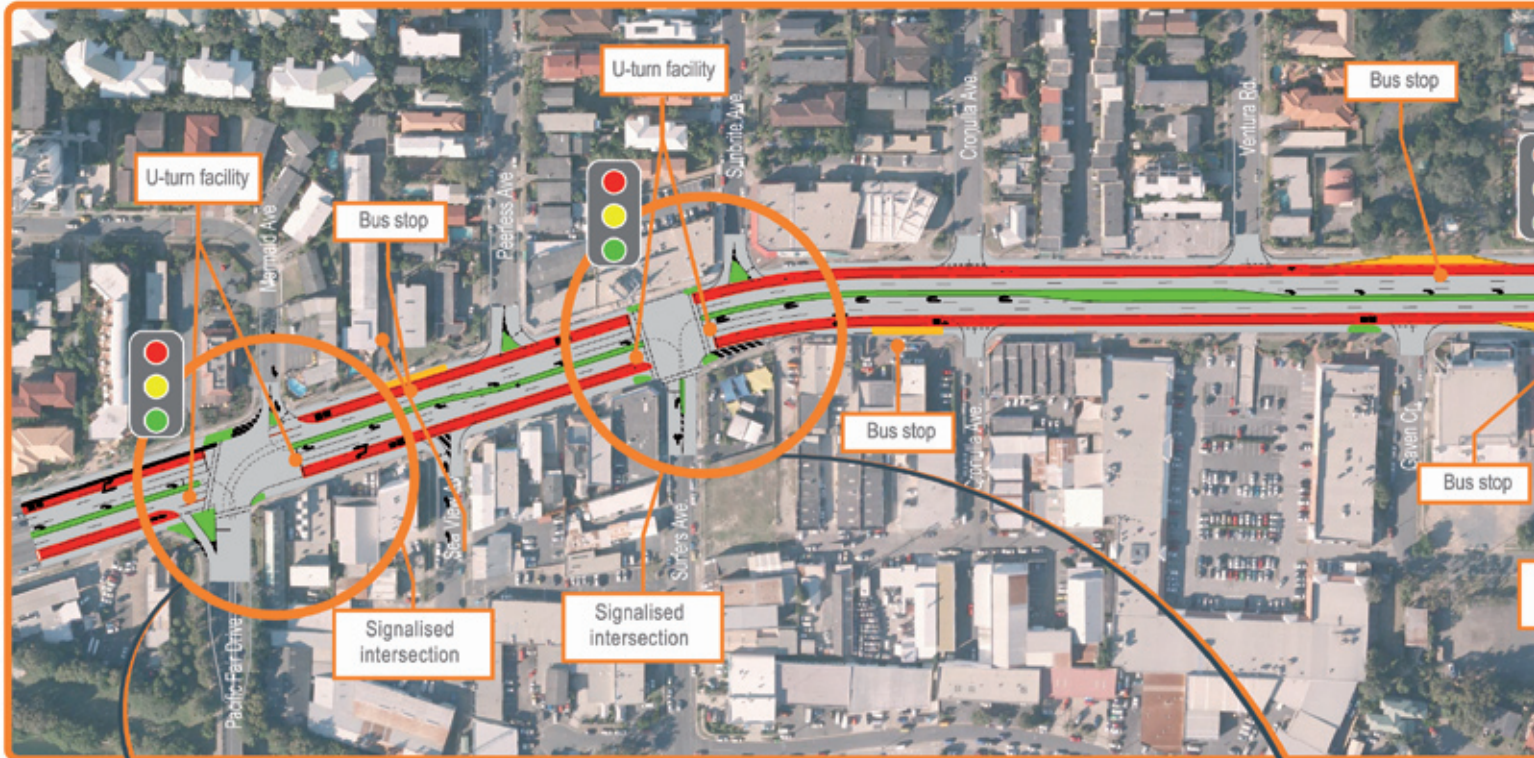
Stage 1 – Pacific Fair Drive to Hilda Street

- » **November 2007**
Stage 1 preliminary works start on traffic islands and signals.
- » **Mid December 2007 to Mid January 2008**
Holiday season works shutdown.
- » **Late January 2008**
Further minor works. Angle parking converted to parallel.
- » **February 2008**
New signals operating. Median strip fenced. Start roll-out of road surfacing works, southbound from Alexandra Avenue. Works plans discussed with neighbours.
- » **Mid 2008 - Stage 1 completion**



The way traffic navigates this road will be safer with turning vehicles separated from those going straight ahead. U-turns will be encouraged at each signalised intersection with turning arrows, signs and extended right-turn lanes. Hold-ups caused by turning vehicles will also be reduced. Vehicles will be able to enter any street on a left-in basis.

For everyone's safety a temporary speed limit of 40 kmph will apply near the work site during construction. Roadside signs will identify the speed restrictions.



Signalised intersection at Pacific Fair Dr

Arrows direct vehicles turning left into the bus lane to make the turn

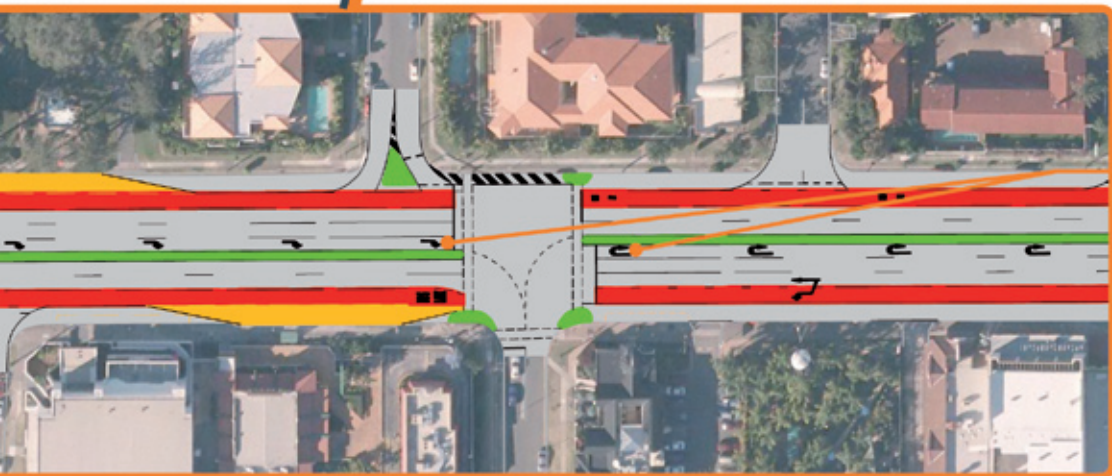


At all signalised intersections



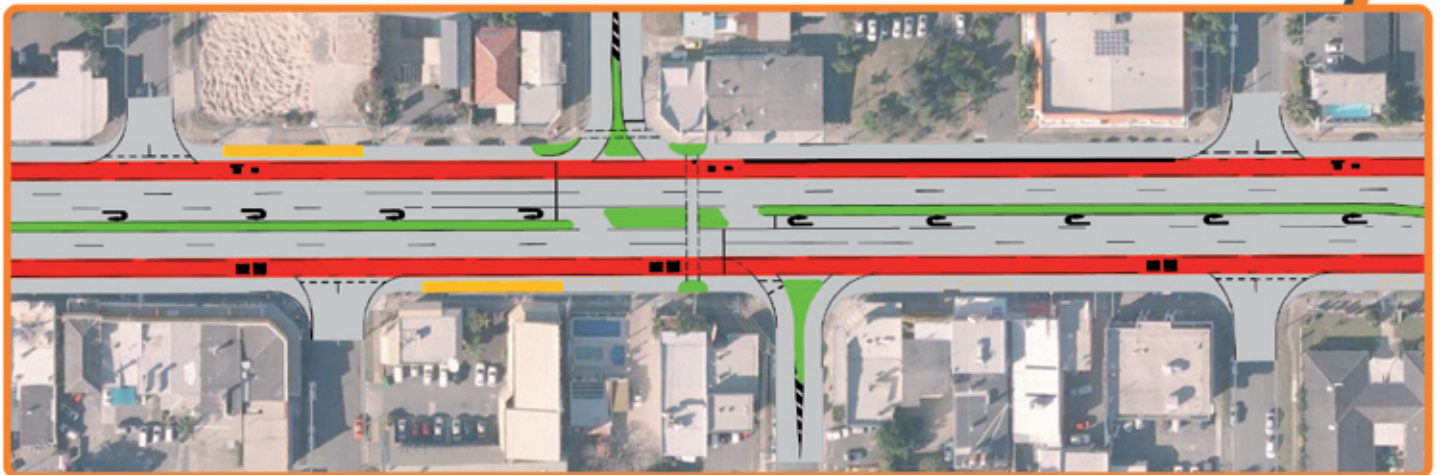
Signalised intersection at Surfers Ave

Gold Coast Highway Broadbeach to Miami - Road upgrade and bus lanes - Stage 1



Signalised intersection at Crescent Ave

Both types of on-road arrows allow u-turns



Revised signalised pedestrian crossing and u-turn facility - (now between Venice and Bondi)

What to expect during construction

2007 – November - mid December

- » Work will start in late November on several sections of new drainage, removal of old traffic islands and positioning of new traffic signals.
- » The impacts of these works on individual properties will be minimal. Main Roads will liaise with nearby properties about the timing and extent of the works. Driveway and footpath access to all properties will be maintained.
- » Intermittent lane closures on the road will be necessary over short distances. It is not always possible to estimate how long road works will take. As much notice as possible will be provided via letterbox flyers, advertisements and roadside signs.
- » Please watch out for changed driving conditions and expect to find changes from trip to trip.

2008 – Late January - mid year

- » The remaining angle parking will be converted to parallel bays to enable the existing sections of bus lanes to be joined up. During construction these lanes will also be used for general traffic at times.
- » In commercial areas temporary lines will mark every parking space to ensure maximum availability of parking during construction.
- » Reconstruction of the central median strips and the adjacent traffic lanes will follow. The extended turning lanes will be created.
- » The new traffic signals will then be turned on. Traffic flow will be changed by the new provision for u-turns at the signalised intersections.

- » The median strip will be closed with fencing, across all intersections except those with traffic signals. All pedestrian and vehicle crossings and turns will then have the protection of traffic lights
- » In February the full resurfacing and upgrading of all lanes will start rolling-out, southbound from Alexandra Avenue. This will involve removing the existing road pavement and replacing it with new asphalt. This work will be done in sections of about 100 metres at a time to minimise inconvenience.
- » Every effort will be made to minimise disruption to businesses and residents but some short term inconvenience will be unavoidable.

Information updates

- » As works progress further updates will be provided. However works are always subject to delay because of wet weather and unforeseen complications, particularly under the road.
- » Main Roads will advise when works will affect driveways or parking and people may be asked to park in side streets. Hopefully these inconveniences will be for a day or two at most.
- » Every effort will be made to keep driveways open during trading hours, and Main Roads will liaise with businesses and residents during the week before the works arrive at their properties.
- » The roll-out of the upgrade will involve some extended work hours and night work. People nearby will be advised closer to those times.



Plan ahead, get there on time

Before setting out:

- » Log on to www.131940 for traffic updates
- » Phone toll free number 131940
- » Allow extra travel time, take a different route or try public transport
- » Follow our signs and directions around road works to keep safe



Project contacts:

Main Roads District Office:

36 -38 Cotton Street, Nerang, Qld 4211

Mail: PO Box 422 Nerang QLD 4211

Ph: 5596 9500

Fax: 5596 9511

Email: NerangDO@mainroads.qld.gov.au

Web: www.mainroads.qld.gov.au

» Click on 'Public & Road Users Site'

» Then click 'Find road projects'

» Search for Gold Coast Highway bus lanes

“We put these out for your safety and ours ...
... please slow down.”



Safety around roadworks. It's a two-way street.