

Local Links

Issue 10: 3 September 2010

Your news and updates from in and around Metro

Major roadworks affecting traffic

Ted Smout Memorial Bridge now open to traffic

Brisbane bound traffic now travels on the Ted Smout Memorial Bridge, with two lanes open at all times.

All Redcliffe bound traffic remains on the existing Houghton Highway bridge, which will be progressively resurfaced. During refurbishment works on the Houghton Highway bridge, one lane will remain open at all times, with two lanes open during peak hours. Please refer to page 3 for more information.

Bowen Hills to Woolloowin: changed traffic conditions

There will be changed traffic conditions along Lutwyche Road and Truro Street between Albion Road and Kedron Park Road.

Work will be carried out between 8pm and 5am, as required until 2012, weather permitting.

Airport Link

Temporary lane closures during night works on Lutwyche Road at Bowen Hills until late 2010. Please refer to page 5 for more information.

Riverview: Ipswich Motorway traffic changes

From Monday 13 September 2010, a new temporary on-ramp to the Ipswich Motorway (Brisbane bound) will be opened at the eastern end of McEwan Street at Riverview and the existing on-ramp at Station Road will be closed permanently. See page 4 for more information.

Major events affecting traffic

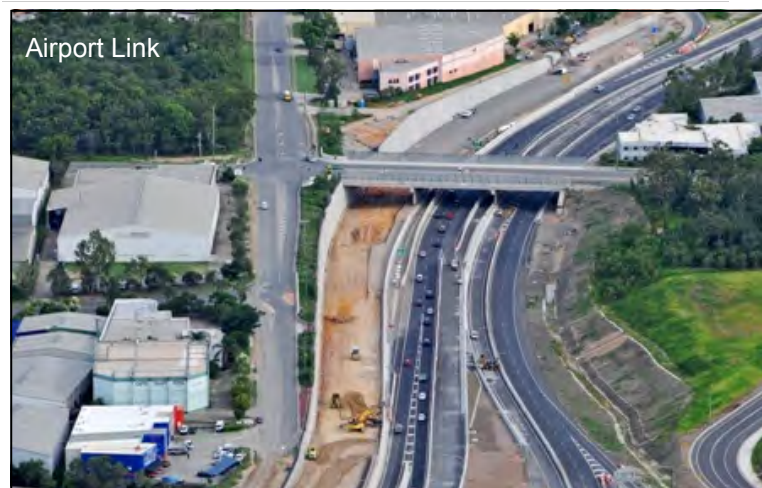
Rugby League: The Brisbane Broncos v Canberra Raiders

Friday 3 September from 7.30pm to 9.20pm at Suncorp Stadium

Brisbane Riverfire

Saturday 4 September, 2010 various road closures shall be in place in the CBD, Fortitude Valley, Kangaroo Point and Southbank areas between the hours of 4pm and 11pm.

Visit www.131940.qld.gov.au for more information



For enquiries on roadworks and traffic conditions, or to report an incident, call 13 19 40.

Here for Life message

Slow down Dad

Speeding continues to be one of the major killers on Queensland roads and 17-39 year old males are those most highly involved in speed related fatal crashes.



As Father's Day approaches, this should be a reminder to slow down - if not for your own sake - for the sake of your family and loved ones.

During 2009 there were 75 deaths as a result of speed-related crashes, representing more than 22 per cent of Queensland's road toll.

Whether driving on an open road or in a busy car park, speeding risks lives and crashes caused by speeding can happen anytime, anywhere.

It's a simple fact - the faster you drive, the longer it takes to stop and the harder the collision will be. If you're driving at 60 km/h for example, it takes 56 metres to stop. At 65 km/h it takes 63 metres to stop. That could be the difference between life and death. Although many motorists may think they are skilled enough to handle their car at excess speed, it is impossible to predict or control the ability and actions of other drivers or road users.

Remember the signed speed limit is the maximum safe speed for travel in ideal conditions. You may need to drive much slower to suit different weather and road conditions. You also need to keep a sufficient distance between your vehicle and the vehicle in front of you. Two seconds is the minimum safe following distance for a car in ideal conditions and this should be at least doubled in poor conditions.

There are fixed speed camera sites throughout south-east Queensland and police use mobile, covert and hand-held speed detection devices to enforce speed limits. If you don't want to pay a fine then keep to the posted limit.

Drivers and motorcycle riders caught more than 20 km/h over the speed limit twice in a 12 month period will accumulate double demerit points.

spotlight

Check out our new website

If you have been to our old web address lately you will have noticed a redirection to our brand new Department of Transport and Main Roads website.

The new website combines content from both the previous Transport and previous Main Roads websites.

Traffic and project updates are easier to find, as well as mapping, licensing, registration and travel information.

One of the most popular features of the website is the interactive map and points of interest downloads, including driver reviver rest stops – all accessible via the one TMR website.

The latest news and events from around Queensland are shown on the homepage, with links to offering more information.

Quick links to transport and registration forms, traffic camera information, the 13 19 40 traffic update website and pages to update licensing information can all be found down the right hand side of the home page.

Visit www.tmr.qld.gov.au and have a surf, you'll be surprised how much information we've been able to cram into the website!

Travelsmart Tip:
www.hereforlife.qld.gov.au

- You are not allowed to make a U-turn:
- where there is a sign stating NO U-TURN
 - at traffic lights unless there is a sign stating U-TURNS PERMITTED
 - across a single or double continuous
 - centre line or a continuous centre line to the left of a broken line. If you do this, you risk being fined A\$180 and three demerit points.

Road work and traffic conditions

North Brisbane

Houghton Highway Duplication Project

Ted Smout Memorial Bridge now open to traffic

Brisbane bound traffic now travels on the Ted Smout Memorial Bridge, with two lanes open at all times. All Redcliffe bound traffic remains on the existing Houghton Highway bridge, which will be progressively resurfaced. During refurbishment works on the Houghton Highway bridge one lane will remain open at all times, with two lanes open during peak hours. All traffic changes will be clearly signed.

There will be ongoing works associated with the refurbishment and the realignment of the southern and northern approach intersections at Clontarf and Brighton. These will be clearly signed and any full closures will be advertised well in advance.

Peak hour traffic effect

Closures are expected to occur outside peak travel periods

Further information

Project Team on 1800 626 976

South Brisbane

Eight Mile Plains: extending the Veloway 1

The department is extending the existing veloway from Miles Platting Road to the Gateway Motorway off-ramp.

Works are due to be complete by January 2011.

Peak-hour traffic effect

Low impact. Lane closures and reduced speed limits apply.

Further information

Project Manager on 3137 8124

East Brisbane

Capalaba: Redland Bay Road and Smith Street intersection works completed in August

Works to improve safety at the intersection of Redland Bay Road and Smith Street, Capalaba have finished.

Work included extending the left and right turn lanes from Redland Bay Road into Smith Street and upgrading the traffic signals to include an additional left turn arrow into Smith Street.

Capalaba West: Old Cleveland Road and New Cleveland Road intersection improvements

The department is improving safety at the intersection of Old Cleveland Road and New Cleveland Road, Capalaba West.

Work includes modifying turning lanes and traffic signals, and installing pedestrian crossing facilities, concrete footpath and bike lane markings.

Work will be carried out between 8pm and 5am, Monday to Friday and is expected to be completed by late October 2010, weather permitting.

Peak hour traffic effect

Minor traffic disruptions due to lane closures and reduced speed limits during non-peak periods.

Further information

Project team on 3137 8344

Lytton: Intersection upgrade works: Lytton Road, Lindum Road and Gosport Street

The department is completing preliminary construction work at the intersection of Lytton Road, Lindum Road and Gosport Street, Lytton.

Work will be carried out between 7am and 5pm, Monday to Saturday. Work is expected to be completed in early 2011, weather permitting.

Peak hour traffic effect

Minor traffic disruptions due to lane closures and reduced speed limits

Further information

Project team on 3137 8282

Riverview: Ipswich Motorway traffic changes

From Monday 13 September 2010, a new temporary on-ramp to the Ipswich Motorway (Brisbane bound) will be opened at the eastern end of McEwan Street at Riverview and the existing on-ramp at Station Road will be closed permanently.

Motorists who wish to access the new on-ramp from the Tessman Street overpass will be required to use the roundabout at the intersection of Station Road and McEwan Street.

The temporary on-ramp will be in place for approximately 12 months.

All works are subject to weather and construction conditions.

Peak-hour traffic effect

Motorists are advised to pay attention to signage when accessing the new on-ramp.

Further information

Community Engagement Team on 1800 465 688

**Warrego Highway safety improvement works**

Safety improvement work have been completed on the Warrego Highway between Kholo Road Overpass and Eleazar Drive.

Other Works

Brisbane Airport**Ongoing works on Moreton Drive**

There will be ongoing works along Moreton Drive and Nancy Bird Way at Brisbane Airport continuing throughout August 2010. There will be some intermittent lane closures on Moreton Drive at night and during off-peak times.

Further information

Brisbane Airport Major Projects Team on 1300 732 240
Email: info@bacmajorprojects.com.au

Brisbane City Council**Kingsford Smith Drive - Harvey Street to Theodore Street upgrade****Eagle Farm construction works**

There will be temporary lane closures along Kingsford Smith Drive between Harvey Street and Theodore Street. This will allow for excavation works, road resurfacing, kerb and channel, footpath works and installing street lighting and sewer manholes throughout August 2010. Construction will mostly occur between 7am and 5pm Monday to Saturday, with some night works and Sunday works. The speed limit has been reduced to 40 km/h throughout the construction site.

Further information

Community Relations Team on 1800 727 923

Airport Roundabout Upgrade**Airport Roundabout and Gateway Motorway: changed traffic conditions**

There will be lane closures and detours on sections of the Airport Roundabout and Gateway Motorway for work on the East-West Arterial flyover and new Gateway Motorway Bridge.

Work will be carried out between 10pm and 4am, as required, and is scheduled to be completed by mid 2011, weather permitting.

East West Arterial Road lane closures

There will be single lane closures on East West Arterial Road between 8am to 5pm, Monday to Friday and 24 hours a day on weekends, until the end of August 2010.

Height restrictions on the Airport Roundabout

There are height restrictions on the eastbound Airport Roundabout circulating lanes until late 2010.

Vehicles exceeding the five metre height restriction should detour via the northbound off-ramp. Alternatively, vehicles can continue north to the Toombul Road roundabout and access the southbound on-ramp to the Gateway Motorway before taking the Airport Drive exit.

Further information

Airport Link Team on 1800 721 783
Email: contactus@tjh.com.au

Airport Link

Bowen Hills: Inner City Bypass

Temporary lane closures will be in place on the Lutwyche Road off-ramp of the Inner City Bypass, as required, until late 2010.

Bowen Hills: Lutwyche Road

Temporary lane closures will be in place on Lutwyche Road between Northey Street and Newmarket Road as required until late 2010.

Bowen Hills to Wooloowin: changed traffic conditions

There will be changed traffic conditions along Lutwyche Road and Truro Street between Albion Road and Kedron Park Road. Work will be carried out between 8pm and 5am, as required until 2012, weather permitting.

Kedron: Gympie Road

Gympie Road (southbound) will be reduced to two lanes from Somerset Road to Broughton Road until late 2010.

Windsor: Truro Street

Changed traffic conditions at Truro Street are currently in place. The two existing southbound lanes on Lutwyche Road from Chalk Street will be continued 150 metres south on Truro Street between Stoneleigh Street and Annie Street. The T3 transit lane will be relocated to 100 metres south of Albion Road intersection. Work is scheduled to be completed by mid 2012, weather permitting.

Clayfield: Lewis Street

On Friday, 3 September 2010, geotechnical work will be undertaken in Lewis Street, Clayfield for the installation of a groundwater monitoring well. The geotechnical works will take place between 7.30am and 5.00pm, weather permitting and traffic control will be in place.

Further information

Airport Link Team on 1800 721 783
Email: contactus@tjh.com.au



Gateway Upgrade Project

North

Eagle Farm to Murarrie: Sir Leo Hielscher Bridge All six lanes to open—southbound

Following the upgrade to the southbound off ramp to Lytoon road and completion of tie-in works, all six lanes over the Sir Leo Hielscher Bridge are now open to traffic.

Changed traffic conditions will be in place on the original Sir Leo Hielscher Bridge, between 8pm and 4.30am, as required until late 2010, weather permitting.

South

Mt Gravatt-Capalaba Road interchange, Mackenzie/Mansfield: The construction of bridge deck to widen the northbound overbridge and the installation of bridge barriers (parapets) is ongoing.

Mt Gravatt-Capalaba Road, Mansfield to Prebble Street, Rochedale: In the centre median and on the eastern side of the motorway, drainage, earthworks and the laying of asphalt pavements is ongoing.

Eagle Farm

From Links Avenue North an additional lane will be opened travelling south on the Old Gateway Motorway (three lanes). From the Eagle Farm area an additional lane will be opened travelling south on the new Gateway Motorway (three lanes).

Sir Leo Hielscher Bridge

The additional lanes from the Old Gateway Motorway and the new Gateway Motorway will continue through to the new Sir Leo Hielscher Bridge providing six southbound lanes over the Brisbane River.

Murarrie

The southbound off-ramp to Lytton Road will be re-opened to traffic. The Port of Brisbane southbound off-ramp will remain open for direct access to the Port of Brisbane. Four lanes on the southbound Gateway motorway carriageway will be open from the Lytton Road overbridge.

Further information

Gateway Upgrade Project Team on 1800 700 525
Email enquiries@gatewayupgradeproject.com.au

West Brisbane & Ipswich

Anstead: Mount Crosby Road safety improvement works

The department is completing the second stage of safety improvement works on Mount Crosby Road, Anstead.

Work will include regrading the roadside drain, extending and constructing new culverts, relocating power poles, removing roadside hazards, widening shoulders and installing guardrails.

Work will be carried out between 6am and 3pm, Monday to Friday, with occasional weekend and night works. Work is expected to be completed in late October 2010.

Peak-hour traffic effect

Minor traffic disruptions due to lane closures and reduced speed limits throughout the worksite.

Further information

Project team on 3137 8282

Brassall: Pine Mountain Road and Holt Street/Hunter Street intersection improvements

The department is improving safety at the intersection of Pine Mountain Road and Holt Street/Hunter Street at Brassall.

Work will be carried out between 6am and 3pm, Monday to Friday. Work is expected to be completed by late September 2010, weather permitting.

Peak-hour traffic effect

Minor traffic disruptions due to lane closures and reduced speed limits.

Further information

Project team on 3137 8282

Darra to Springfield Transport Corridor Stage 1

The Centenary Highway will have temporary road closures between Progress and Garden Roads, Richlands to allow traffic realignment works to take place. These night works will be completed from Monday 13 September inclusive to Sunday 19 September 2010.

Motorists will be detoured via the Progress Road and Garden Road on and off-ramps.

Peak-hour traffic effect

Temporary closures will take place during non-peak periods (between 8pm and 5am).

Further information

Project team on 1800 887 464

Gatton: Spencer Street pedestrian footpath works

The department is constructing a new pedestrian footpath on Spencer Street, Gatton.

The new concrete footpath will connect the entrance of the Gatton Caravan Park to the existing footpath which runs under the rail overpass into Buaraba Street.

Civil works were completed in August. Electrical works will commence in early September and will take approx. 5 weeks to complete. Electrical works are expected to conclude by mid October.

Work will be carried out between 8am and 3.30pm, Monday to Friday, with occasional night work between 9pm and 5am.

Peak hour traffic effect

Minor traffic disruptions due to temporary lane closures and reduced speed limits.

Further information

Project Team on 3137 8282

Ipswich Motorway Upgrade: Dinmore to Goodna

Mine Street traffic changes

To allow for upgrades to Mine Street and the new Smiths Road intersection, there are ongoing traffic changes along Mine Street between the Mine Street interchange and Namatjira Drive. These traffic changes will continue until the end of 2010, weather and construction conditions permitting.

Peak-hour traffic effect

Ongoing traffic changes until end of 2010.

Smiths Road extension

A pedestrian diversion is in place and is expected to be in this configuration for approximately three months.

Further information

Project Team on 3137 8282

Goodna: Ipswich Motorway

During preparation works for an upcoming temporary motorway realignment at Goodna, Brisbane bound traffic will be diverted along the Church Street off ramp to the Church Street on-ramp from 7pm Sunday 5 September to 5am Monday 6 September 2010.

Redbank: Ipswich Motorway traffic changes

Ipswich bound traffic on the Ipswich Motorway will be temporarily realigned from Redbank Plaza to the bridge over Six Mile Creek from Monday 16 August 2010. The Woodford Way on ramp to the motorway will be extended to join with motorway traffic near the new Law Street pedestrian bridge.