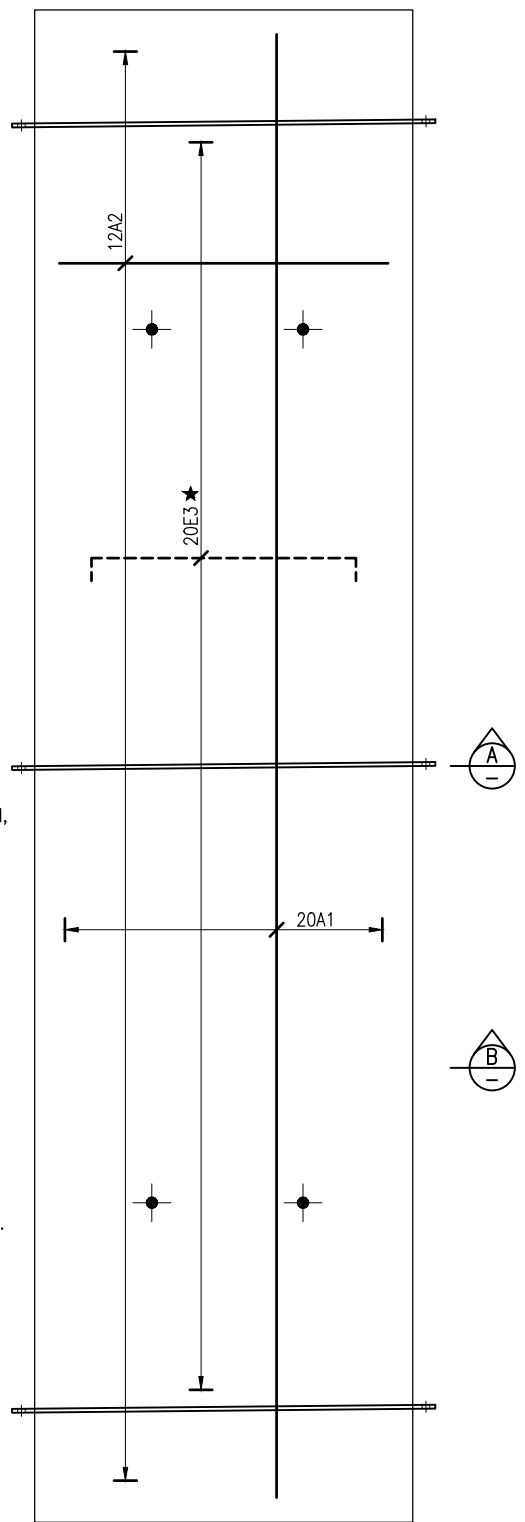
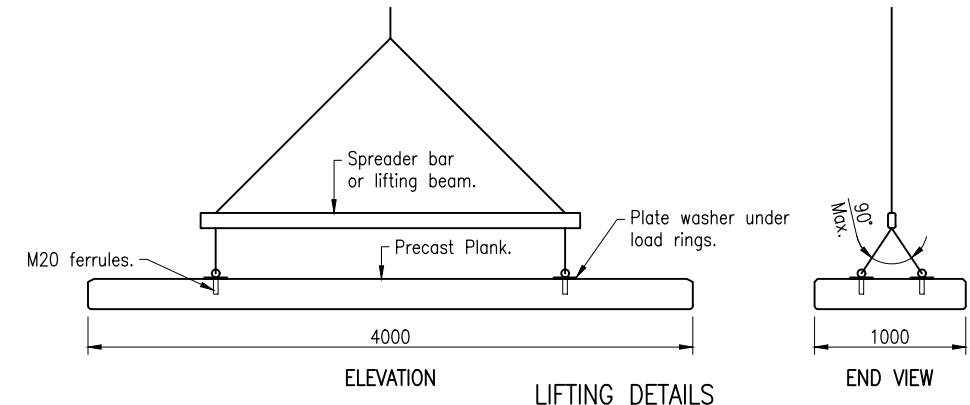


PLAN

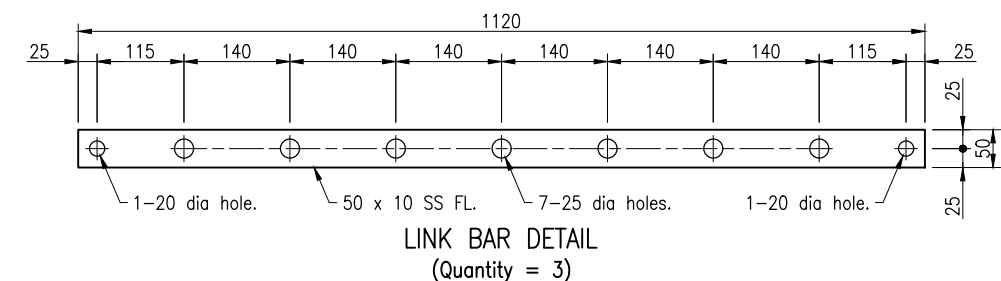


REINFORCEMENT PLAN

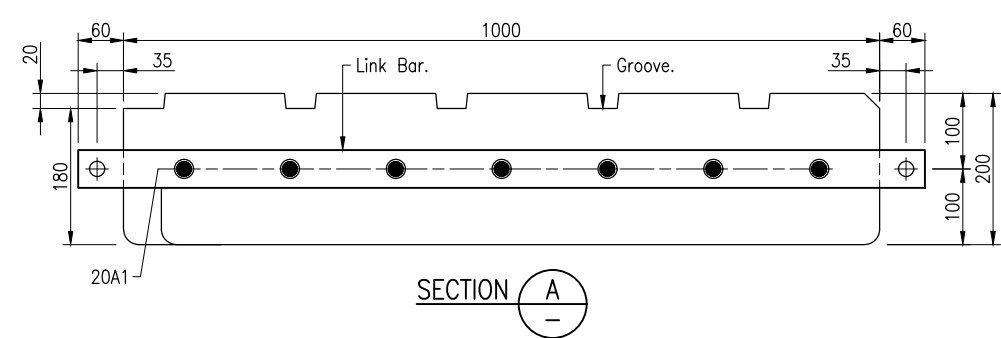


ELEVATION LIFTING DETAILS

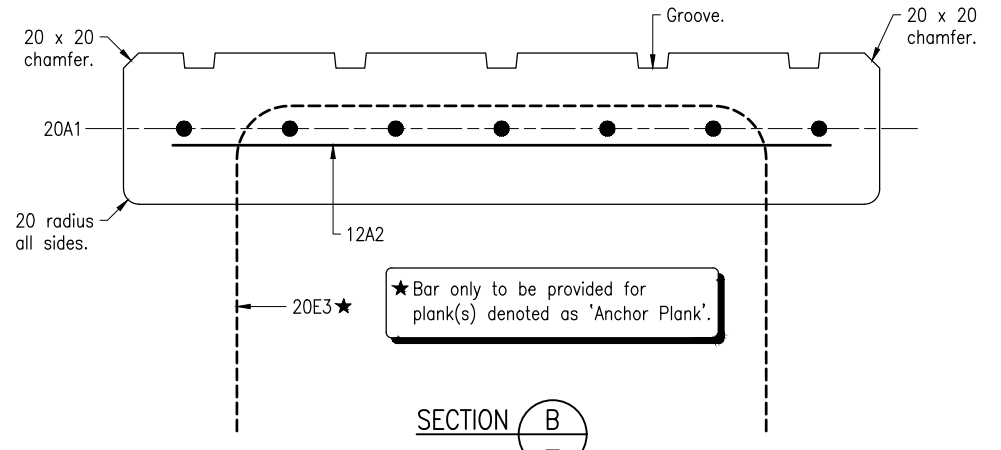
END VIEW



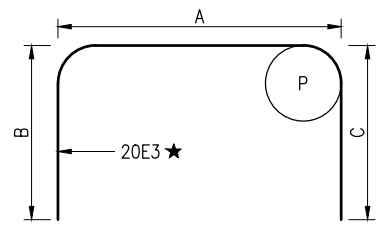
LINK BAR DETAIL  
(Quantity = 3)



SECTION A



SECTION B

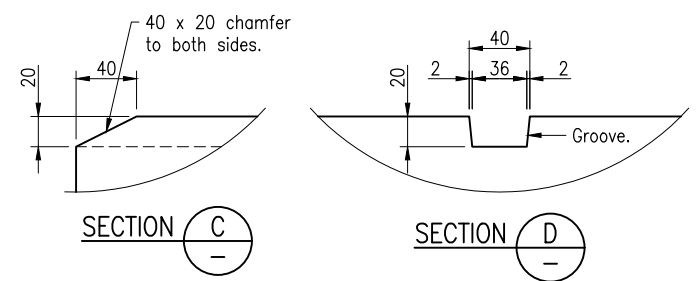


BAR DIMENSIONS

NOTES:

- FABRICATION: Precast planks shall be manufactured to MRTS72.
- DESIGN LOADING: This plank is designed for a multi axle trailer of maximum 2 tonnes per axle at minimum 750 centres. This plank shall only be used for recreational boating facilities with a signed maximum load limit of 8 tonnes per lane.
- CONCRETE: All concrete supply and placement shall be in accordance with MRTS70. The design mix shall be S50/20 for Exposure Classification C2.
- REINFORCING STEEL: All reinforcing steel shall be supplied in accordance with MRTS71. Carbon reinforcing steel and tie wires shall be hot dip galvanised to AS/NZS 4680. Deformed bars: Grade D500N. Minimum cover to carbon reinforcing steel: 65 unless shown otherwise.
- LINK BARS: Link bars shall be Grade 316 stainless steel flats in accordance with ASTM A276. All sharp edges shall be removed and neatly finished.
- STAINLESS STEEL REINFORCEMENT: (for anchor planks only): Bar Mark 20E3★ shall be Grade 316 stainless steel plain bar 500MPa in accordance with BS 6744:2016.
- TRAFFICABLE SURFACE FINISH: The concrete matrix shall be removed to about 1mm below the top of the exposed aggregate to achieve a non-slip finish. The invert of the drainage groove shall retain the off-form finish.
- MASS of Type OS4000 plank is 2000 kg. MASS of Type OS3500 plank is 1750 kg. The mass shall be clearly and permanently marked on a side surface.
- M20 FERRULES shall be Grade 316 stainless steel footed ferrules – either:

Registered Supplier	Product Number (M20)
Reid	FE20095SS
Ancon	FF2096S316
- LIFTING, TRANSPORTATION AND STORAGE: Planks shall not be moved before attaining a minimum strength of 32 MPa. Lifting shall be in accordance with the Lifting Details diagram. Transport and storage shall be in accordance with MRTS72.
- DIMENSIONS are in millimetres unless shown otherwise.





SECTION C

SECTION D

SCHEDULE

PLANK TYPE	DIMENSIONS		REINFORCEMENT									
	'X'	'Y'	Bar Mark	Grade & Size	Shape	P	A	B	C	Length	Quantity	Centres
OS4000	4000	1700	20A1	N20	A	-	3870	-	-	3870	7	140
			12A2	N12	A	-	870	-	-	870	28	140
			20E3★	20 dia SS round bar	E	100	700	430	430	1469	4	1100
OS3500	3500	1450	20A1	N20	A	-	3370	-	-	3370	7	140
			12A2	N12	A	-	870	-	-	870	24	145
			20E3★	20 dia SS round bar	E	100	700	430	430	1469	4	1000

Department of Transport and Main Roads		 <small>© The State of Queensland (Department of Transport and Main Roads) 2022  <a href="http://creativecommons.org/licenses/by/4.0/">http://creativecommons.org/licenses/by/4.0/</a></small>	
PRECAST PLANKS FOR BOAT RAMP			
TYPES OS4000 AND OS3500		A3 Not to Scale	Standard Drawing No <b>SD4001</b> Date 7/2023