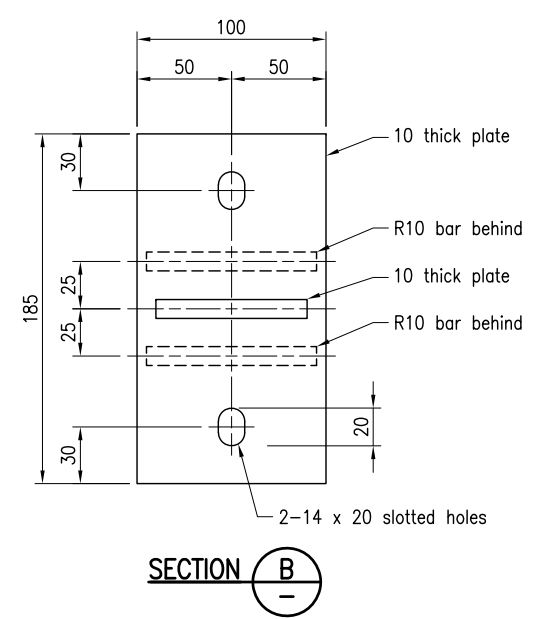


**ASSEMBLY AND FABRICATION DETAILS
EXTENSION BRACKET**



- NOTES:**
- SCOPE: This Standard Drawing provides details of the extension for use when devices are to be mounted above traffic signal posts. Extension to Traffic Signal Post shall be in accordance with MRTS97. Refer Standard Drawing 1428 for traffic signal post details. Refer Standard Drawing 1421 for footing details for traffic signal post.
 - STEELWORK shall be fabricated to the requirements of MRTS78. CHS shall be Grade C250L0 to AS/NZS 1163. Steel plate Grade 250 (minimum) to AS/NZS 3678. Round bar Grade R250N to AS/NZS 4671. All holes shall be drilled or laser cut and all welds shall be completed prior to hot dip galvanising. Thin nuts to AS 1112.4. Washers to AS 1237.1. U-bolts and nuts shall be hot dip galvanised to AS 1214. All other steelwork shall be hot dip galvanised to AS/NZS 4680. Prior to galvanising all weld splatter and welding slag is to be removed. Members shall be branded with suitable type number after fabrication.
 - WELDING symbols conform to AS 1101.3. All welding to AS/NZS 1554.1. All welds except location tack welds to be SP category. Welding consumables to be controlled hydrogen type: G493 to AS/NZS ISO 14341-B or T493 to AS/NZS ISO 17632-B.
 - DIMENSIONS are in millimetres unless shown otherwise.

- REFERENCED DOCUMENTS:**
- Departmental Standard Drawings:
- 1428 Traffic Signals – Traffic Signal Post Base Mounted
 - 1421 Traffic Signals – Traffic Signal Post Footing Installation Details
- Departmental Specifications:
- MRTS78 Fabrication of Structural Steelwork
 - MRTS97 Mounting Structures for Roadside Equipment

Department of Transport and Main Roads				© The State of Queensland (Department of Transport and Main Roads) 2021 https://creativecommons.org/licenses/by/4.0/	
TRAFFIC SIGNALS				A3	Standard Drawing No
SENSOR EXTENSION TO TRAFFIC SIGNAL POST		Not to Scale	1708		
			Date 3/2021		
A	B	C			