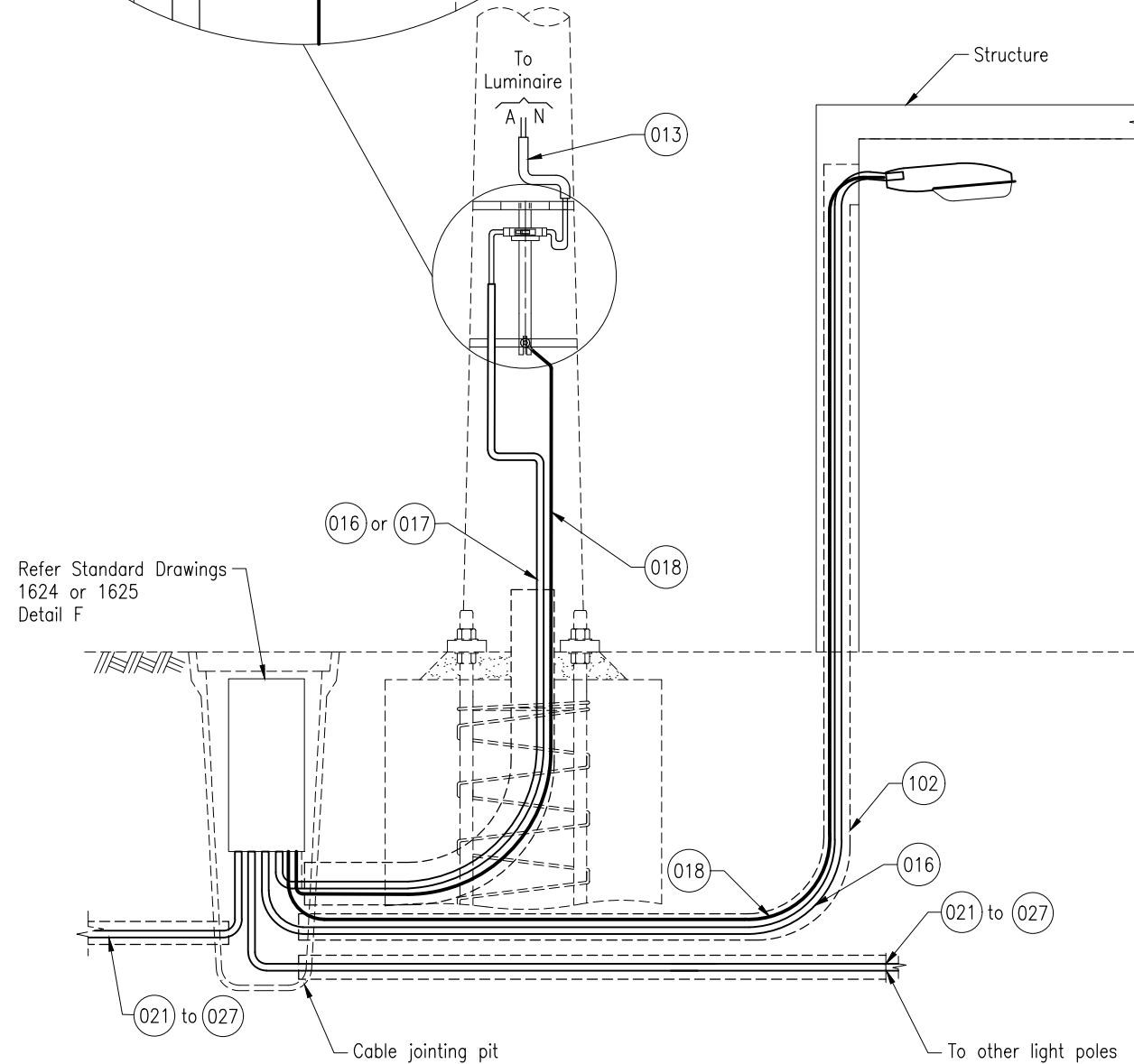
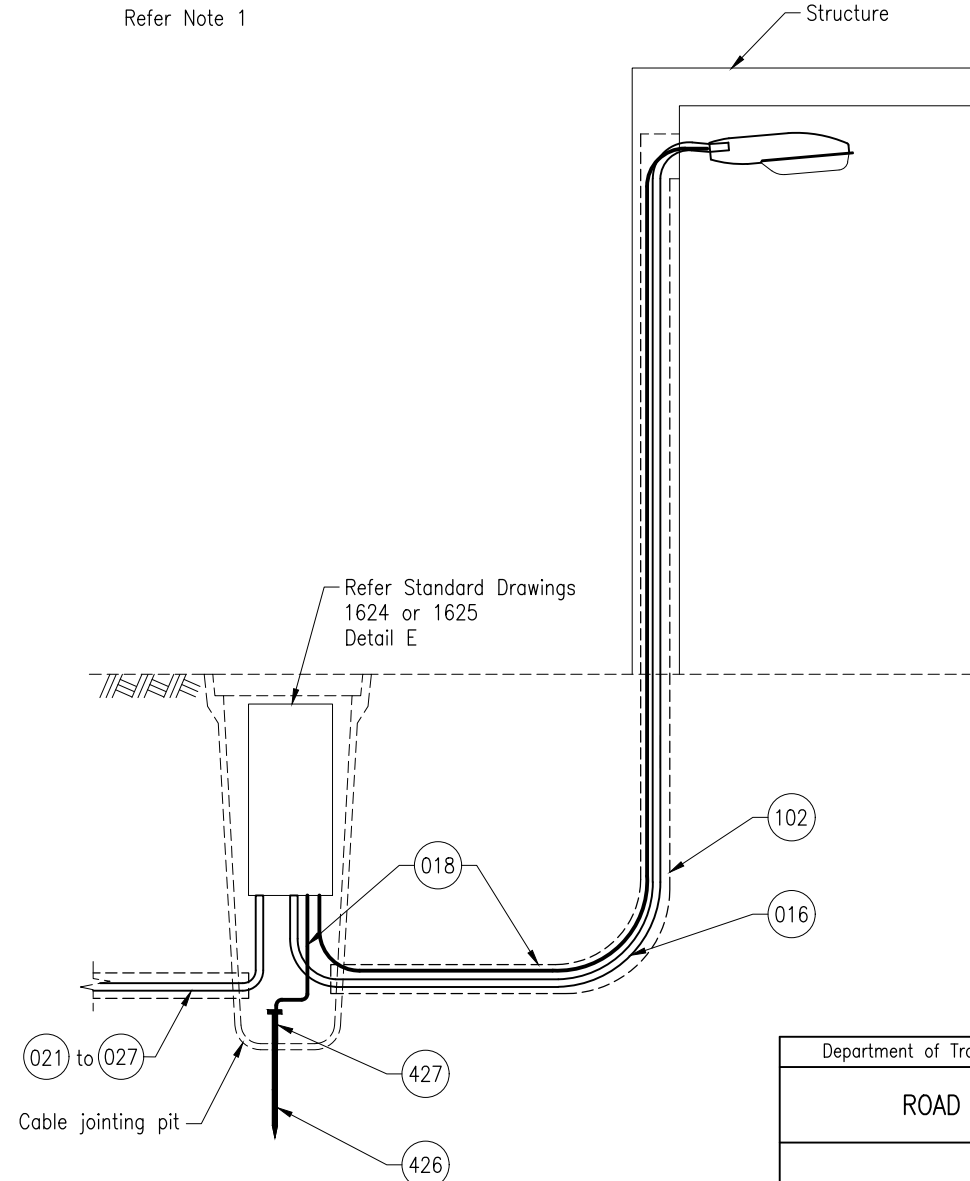


DETAIL 1
ASSEMBLY SEQUENCE FOR
TERMINAL PANEL AND EARTH

Refer Note 1



**CONNECTION TO LOCAL
ROAD LIGHTING POLE**



REMOTE CONNECTION

NOTES:

1. Ensure earth connection properly tightened before installing luminaire terminal panel. Torque on nuts of assembly to be approximately 8Nm. Use a digital torque wrench or ring spanner to tighten. Lubricated/oiled components or power tool based fastening are not accepted.

ASSOCIATED DEPARTMENTAL DOCUMENTS:

Standard Drawings
Specifications

REFERENCED DOCUMENTS:

- Standard Drawings:
 1323 Road Lighting - Luminaire Terminal Panel
 1624 Road Lighting - Junction Box Single Phase Wiring Details
 1625 Road Lighting - Junction Box Three Phase Wiring Details
 1626 Road Lighting - Junction Box Active, Neutral and Earth Bolting Arrangements
 1699 Traffic Signals/Road Lighting/ITS - Parts List

Departmental Specifications:

MRTS228 Provision of Electrical Switchboards

Australian Standards:

AS/NZS 3000 Electrical Installations (Wiring Rules)

INSTALLATION OF CONDUITS AND PITS IS THE RESPONSIBILITY OF THE LICENSED ELECTRICAL CONTRACTOR

Department of Transport and Main Roads		 <small>© The State of Queensland (Department of Transport and Main Roads) 2022 http://creativecommons.org/licenses/by/4.0/</small>	
ROAD LIGHTING			
UNDERPASS LIGHTING WIRING DETAILS		Date 7/2022	A3 Not to Scale