

Table B1 - Standard Component Schedule

No.	Category/Component	Code	Significance Rating	Material				
				Steel(s)	Precast Concrete (P)	Cast-in-Situ Concrete (C)	Timber (T)	Other (O)
Deck Surface (1-9)								
1	Fill/Wearing Surface on Deck	WS	2	-	-	m ²	-	m ²
2	Bridge Railing/Barriers	BR	1	Lin m	Lin m	Lin m	Lin m	Lin m
3	Bridge Kerbs	K	1	Lin m	Lin m	Lin m	Lin m	-
4	Footways	FY	1	Lin m	Lin m	Lin m	Lin m	Lin m
Deck Joints (10-19)								
10	Pourable Joint Seal	J	2	-	-	-	-	Lin m
11	Compression Joint Seal	J	2	-	-	-	-	Lin m
12	Assembly Joint Seal	J	2	-	-	-	-	Lin m
13	Open Expansion Joint	J	2	Lin m	-	-	-	Lin m
14	Sliding Joint	J	2	Lin m	-	-	-	-
15	Fixed/Small Movement Joints	J	2	-	-	-	-	Lin m
Superstructure (20-39)								
20	Deck Slab	D	3	-	Each	m ²	m ²	-
21	Closed Web/Box Girders	G	4	Lin m	Lin m	Lin m	-	-
22	Open Girders	G	4	Each	Each	Each	Each	Each
23	Through Truss	TT	4	Lin m	-	-	-	-
24	Deck Truss	TT	4	Lin m	-	-	-	-
25	Arches	ARH	4	Lin m	Lin m	Lin m	-	Lin m
26	Cables/Hangers	HR	4	Each	-	-	-	-
27	Corbels	COR	3	-	-	Each	Each	-

Table B1 - Standard Component Schedule

No.	Category/Component	Code	Significance Rating	Material				
				Steel(s)	Precast Concrete (P)	Cast-in-Situ Concrete (C)	Timber (T)	Other (O)
28	Cross Beams/Floor Beams	XB	3	Each	-	-	Each	-
29	Deck Planks	D	3	-	Each	-	m ²	-
30	Steel Decking	D	3	m ²	-	-	-	-
31	Diaphragms/Bracing (Cross Girders)	XG	3	Each	-	Each	-	-
32	Load Bearing Diaphragms	XG	4	-	-	Each	-	-
33	Spiking Plank	SP	1	-	-	-	Lin m	-
Bearings (40-49)								
40	Fixed Bearings	B	2	-	-	-	-	Each
41	Sliding Bearings	B	2	-	-	-	-	Each
42	Elastomeric/Pot Bearings	B	2	-	-	-	-	Each
43	Rockers/Rollers	B	2	Each	-	-	-	-
44	Mortar Pads/Bearing Pedestals	MP, PED	1	-	-	-	-	Each
45	Restraint Angles/Blocks	RA	2	Each	-	-	-	Each
Substructure (50-69)								
50	Abutment	A	3	-	-	Each	-	Each
51	Wingwall/Retaining Wall	WW, RW	3	Each	Each	Each	Each	Each
52	Abutment Sheeting/Infill Panels	ABS	2	m ²	m ²	m ²	m ²	m ²
53	Batter Protection	PRO	1	-	m ²	m ²	-	m ²
54	Headstocks	H	4	Each	Each	Each	Each	-

Table B1 - Standard Component Schedule

No.	Category/Component	Code	Significance Rating	Material				
				Steel(s)	Precast Concrete (P)	Cast-in-Situ Concrete (C)	Timber (T)	Other (O)
55	Pier Headstocks (Integral)	H	4	-	-	Each	-	-
56	Columns or Piles (Encasement*)	C	4	Each	Each	Each	Each	Each
57	Pile Bracing/Wales	WAL	3	Each	-	Each	Each	-
58	Pier Walls	PW	3	-	-	m ²	-	m ²
59	Footing/Pile Cap/Sill Log	F, CAP, SL	3	-	-	Each	Each	-
60	Wing Piles	P	3	Each	Each	Each	Each	-
Miscellaneous (70-79)								
70	Bridge Approaches	AP	2	-	-	-	-	Each
71	Waterway	W	2	-	-	Each	-	Each
72	Approach Guardrail	GR	1	Each	Each	Each	Each	Each
73	ID Number Display	ID	1	Each	-	-	-	Each
74	External Strengthening/Post Tensioning	EPT	4	Each	-	-	-	Each
Culverts (80-89)								
80	Pipe Culverts	PC	4	Lin m	Lin m	-	-	Lin m
81	Box Culverts	BC	4	-	Lin m	Lin m	-	-
82	Modular Culverts	MC	4	-	Lin m	-	-	-
83	Arch Culverts	AC	4	Lin m	Lin m	Lin m	-	Lin m
84	Headwalls/Wingwalls	HW	1	-	Each	Each	-	Each
85	Culvert Base Slab/Pipe Invert	CBS	3	-	-	m ²	-	m ²

Table B1 - Standard Component Schedule

No.	Category/Component	Code	Significance Rating	Material				
				Steel(s)	Precast Concrete (P)	Cast-in-Situ Concrete (C)	Timber (T)	Other (O)
LTMS Structures (91-98)								
91	Footings	F	3	-	-	Each	-	-
92	Base Plates, Fittings & Hold Down Bolts	BP	3	Each	-	-	-	-
93	Columns	C	4	Each	-	-	-	-
94	Truss Columns	C	4	Each	-	-	-	-
95	Cantilever Arms Or Gantry Beams	CAN, GB	4	Each	-	-	-	-
96	Gantry Truss	GT	4	Each	-	-	-	-
97	Sign Face Support Structure	SF	3	Each	-	-	-	-
98	Ancillaries (walkways, cable trays, ladders)	ANC	2	Each	-	-	-	-
99	LTMS Mounted Devices	LMD	2	-	-	-	-	Each
Retaining Walls (100-103)								
100	Wall Facing/Panels	WFP	4	Each	m ²	m ²	m ²	m ²
101	Column supports	CS	4	Each	Each	Each	Each	Each
102	Foundation	F	3	-	Lin m	Lin m	-	-
103	Connections	CON	3	Each	-	-	-	-

* Encasements are to be included in the component inventory as strengthening items only.

Table B2 - Standard Component Matrix

No.	Category/Component	Group			
		Abutment	Pier	Span/Cell	Approach
		A1, 2	P _n	S _n	AP1, 2
1	Fill/Wearing Surface on Deck	-	-	✓	-
2	Bridge Railing/Barriers	✓	-	✓	-
3	Bridge Kerbs	✓	-	✓	-
4	Footways	-	-	✓	✓
10	Pourable Joint Seal	✓	✓	✓	-
11	Compression Joint Seal	✓	✓	✓	-
12	Assembly Joint Seal	✓	✓	-	-
13	Open Expansion Joint	✓	✓	✓	-
14	Sliding Joint	✓	✓	✓	-
15	Fixed/Small Movement Joints	✓	✓	✓	-
20	Deck Slab	-	-	✓	-
21	Closed Web/Box Girders	-	-	✓	-
22	Open Girders	-	-	✓	-
23	Through Truss	-	-	✓	-
24	Deck Truss	-	-	✓	-
25	Arches	-	-	✓	-
26	Cables/Hangers	-	-	✓	-

Standard Component Schedule

Appendix B

Table B2 - Standard Component Matrix

No.	Category/Component	Group			
		Abutment	Pier	Span/Cell	Approach
		A1, 2	P _n	S _n	AP1, 2
27	Corbels	✓	✓	-	-
28	Cross Beams/Floor Beams	-	-	✓	-
29	Deck Planks	-	-	✓	-
30	Steel Decking	-	-	✓	-
31	Diaphragms/Bracing (Cross Girders)	-	-	✓	-
32	Load Bearing Diaphragms	-	-	✓	-
33	Spiking Plank	-	-	✓	-
40	Fixed Bearings	✓	✓	-	-
41	Sliding Bearings	✓	✓	-	-
42	Elastomeric/Pot Bearings	✓	✓	-	-
43	Rockers/Rollers	✓	✓	-	-
44	Mortar Pads/Bearing Pedestals	✓	✓	-	-
45	Restraint Angles/Blocks	✓	✓	-	-
50	Abutment	✓	-	-	-
51	Wingwall/Retaining Wall	✓	-	✓	✓
52	Abutment Sheeting/Infill Panels	✓	-	-	-
53	Batter Protection	✓	-	-	✓

Standard Component Schedule

Appendix B

Table B2 - Standard Component Matrix

No.	Category/Component	Group			
		Abutment	Pier	Span/Cell	Approach
		A1, 2	P _n	S _n	AP1, 2
54	Headstocks	✓	✓	-	-
55	Pier Headstocks (Integral)	-	✓	-	-
56	Columns or Piles (Encasement*)	✓	✓	-	-
57	Pile Bracing/Wales	✓	✓	-	-
58	Pier Walls	-	✓	-	-
59	Footing/Pile Cap/Sill Log	✓	✓	-	-
60	Wing Piles	✓	-	-	-
70	Bridge Approaches	-	-	-	✓
71	Waterway	-	-	✓	-
72	Approach Guardrail	-	-	-	✓
73	ID Number Display	✓	✓	-	-
74	External Strengthening/Post Tensioning	✓	✓	✓	-
80	Pipe Culverts	-	-	✓	-
81	Box Culverts	-	-	✓	-
82	Modular Culverts	-	-	✓	-
83	Arch Culverts	-	-	✓	-
84	Headwalls/Wingwalls	✓	-	✓	-

Table B2 - Standard Component Matrix

No.	Category/Component	Group			
		Abutment	Pier	Span/Cell	Approach
		A1, 2	P _n	S _n	AP1, 2
85	Culvert Base Slab/Pipe Invert	-	-	✓	-
91	Footings	-	✓	-	-
92	Base Plates, Fittings & Hold Down Bolts	-	✓	-	-
93	Columns	-	✓	-	-
94	Truss Columns	-	✓	-	-
95	Cantilever Arms Or Gantry Beams	-	-	✓	-
96	Gantry Truss	-	-	✓	-
97	Sign Face Support Structure	-	-	✓	-
98	Ancillaries (walkways, cable trays, ladders)	-	-	✓	-
99	LTMS Mounted Devices	-	-	✓	-
100	Wall Facing/Panels	✓	-	-	-
101	Column supports	✓	-	-	-
102	Foundation	✓	-	-	-
103	Connections	✓	-	-	-

Figure B1 - Bridge component designation (1 of 2)

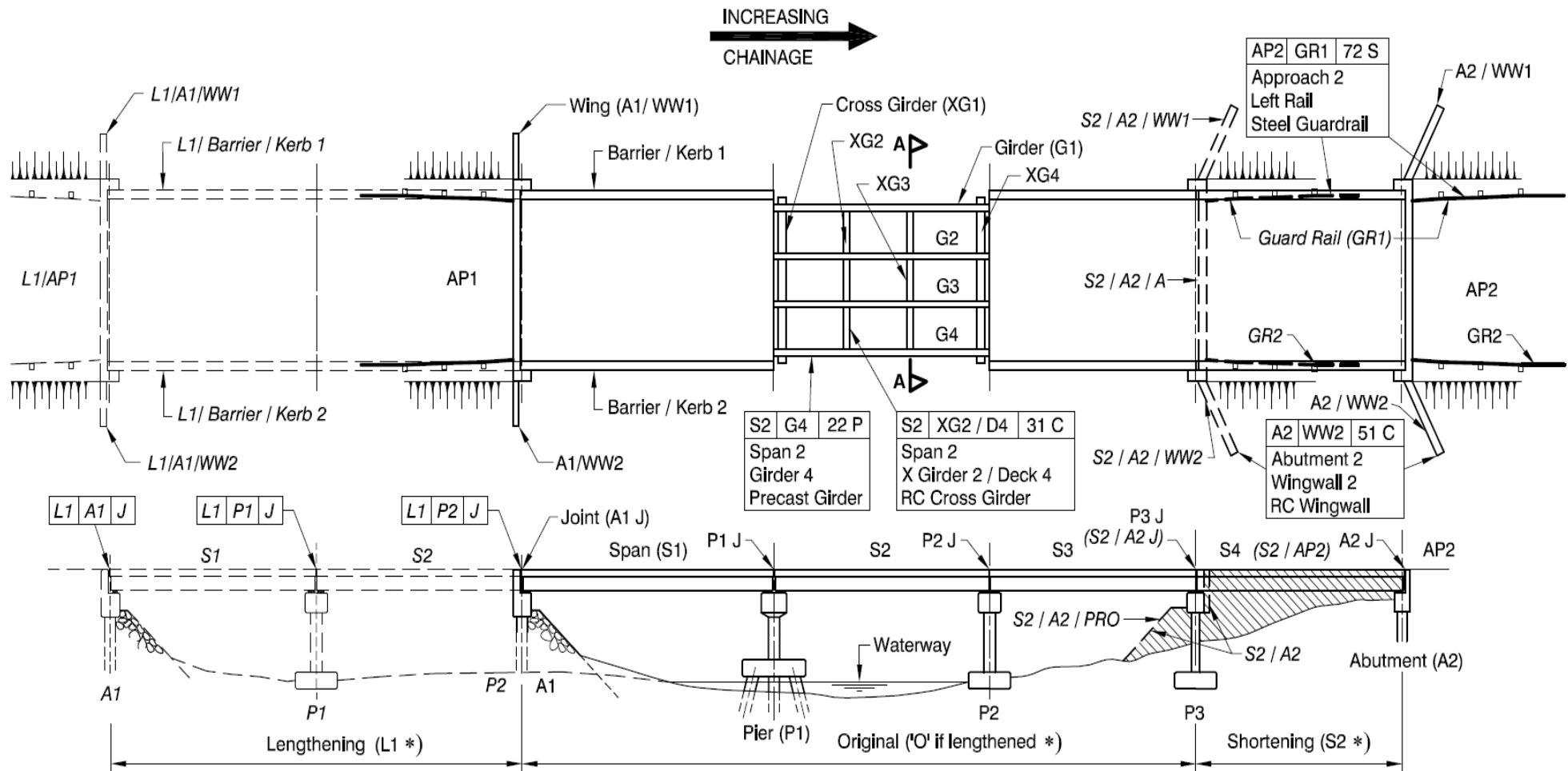


Figure B2 - Bridge component designation (2 of 2)

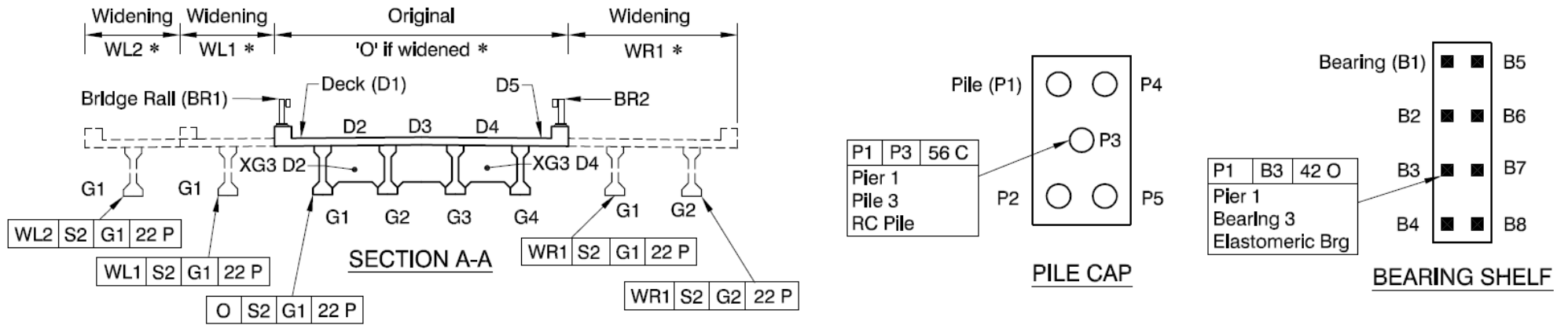


Figure B3 - Culvert component designation

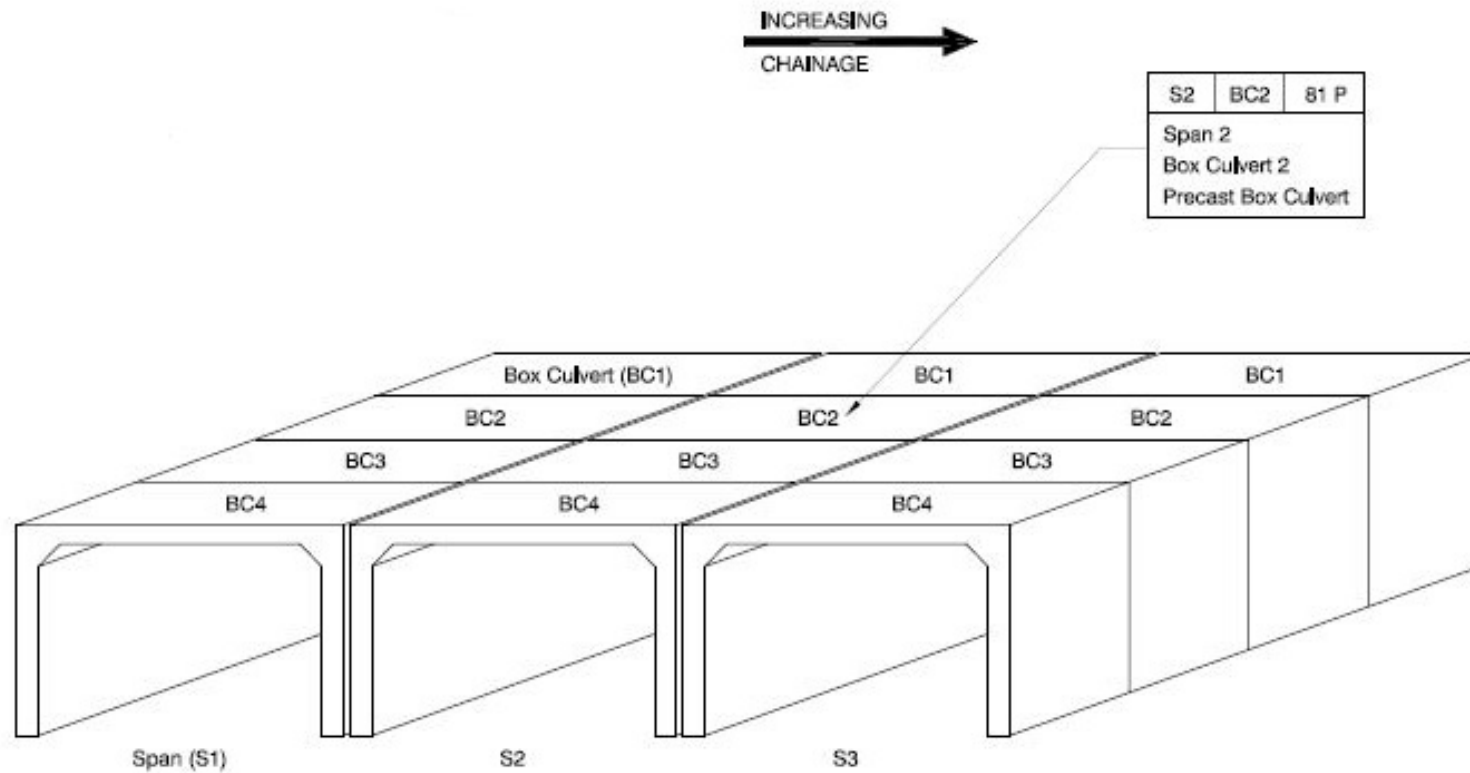


Figure B4 - General bridge terminology

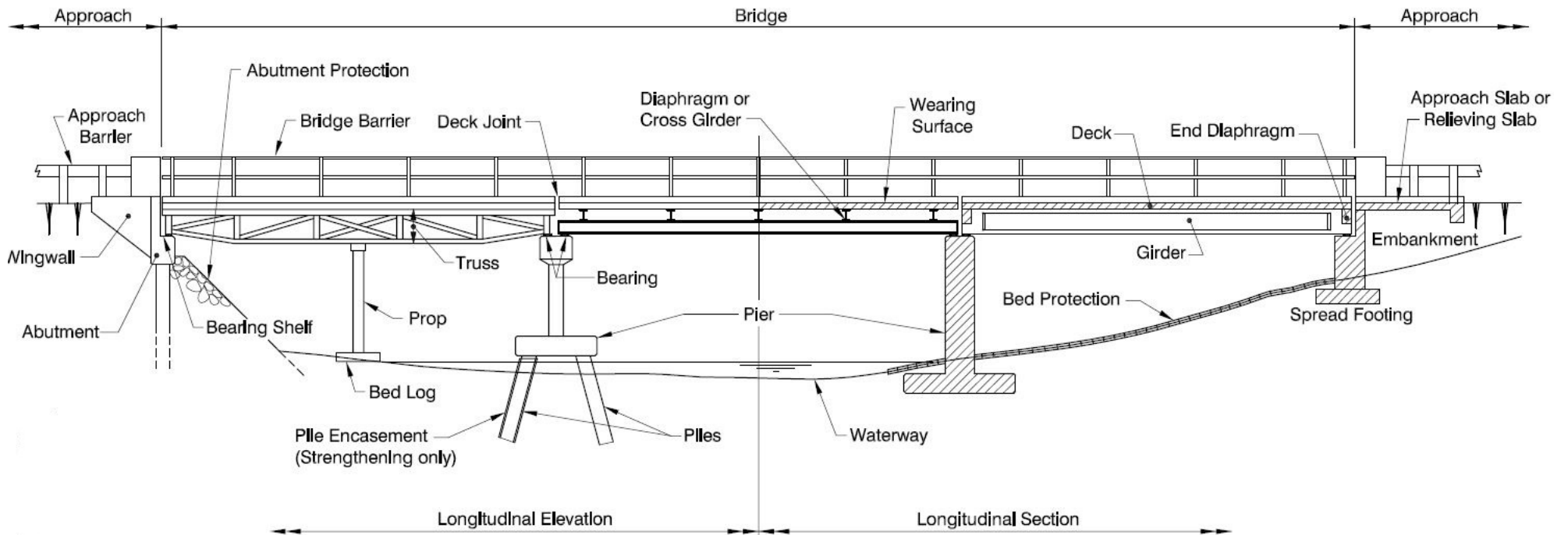


Figure B5 - Timber bridge terminology

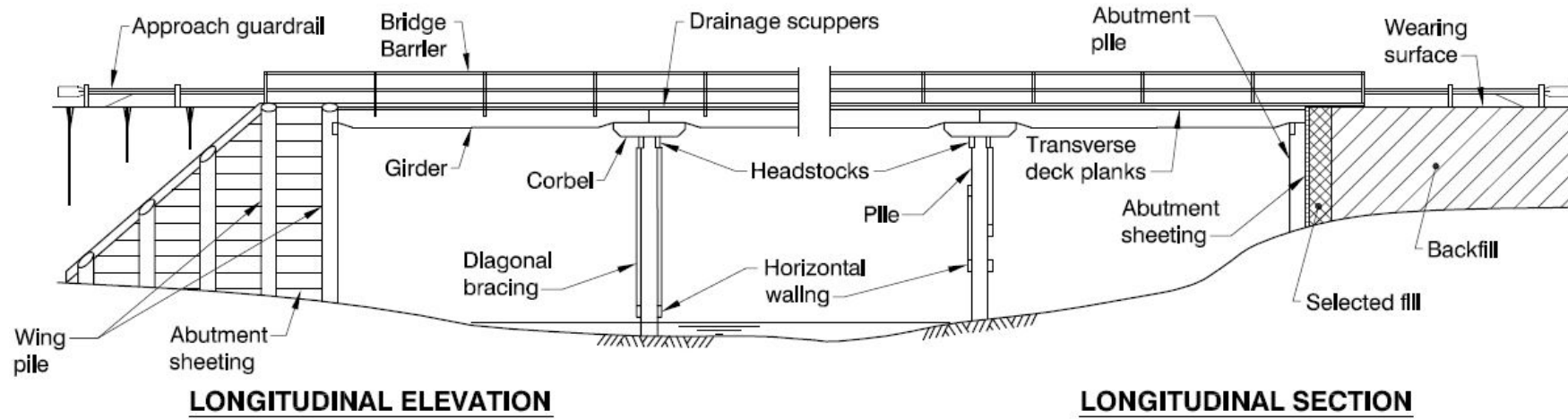


Figure B6: Masonry bridge terminology

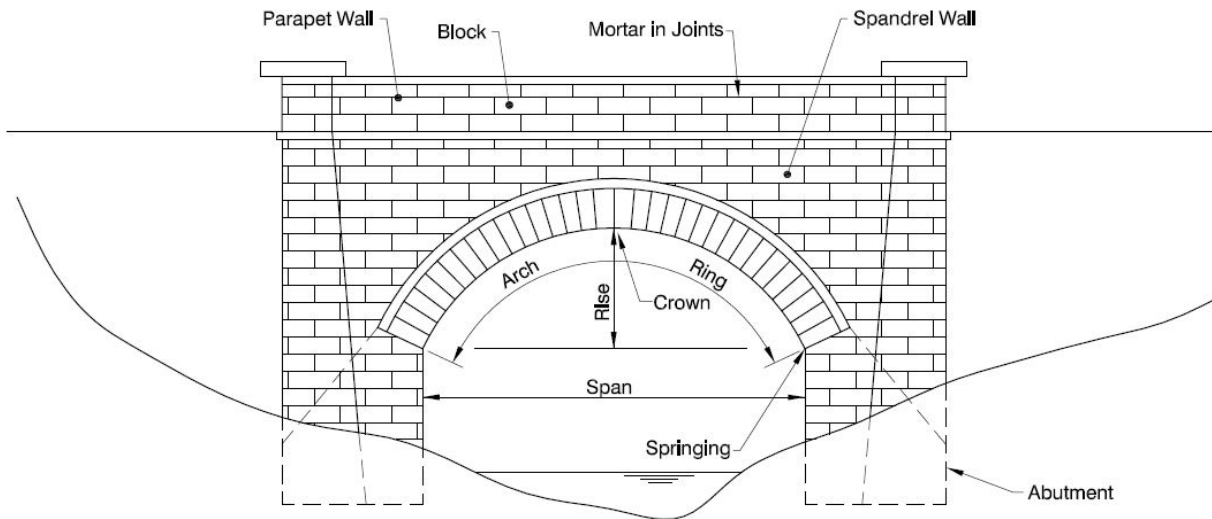


Figure B7 - Precast crown culvert terminology

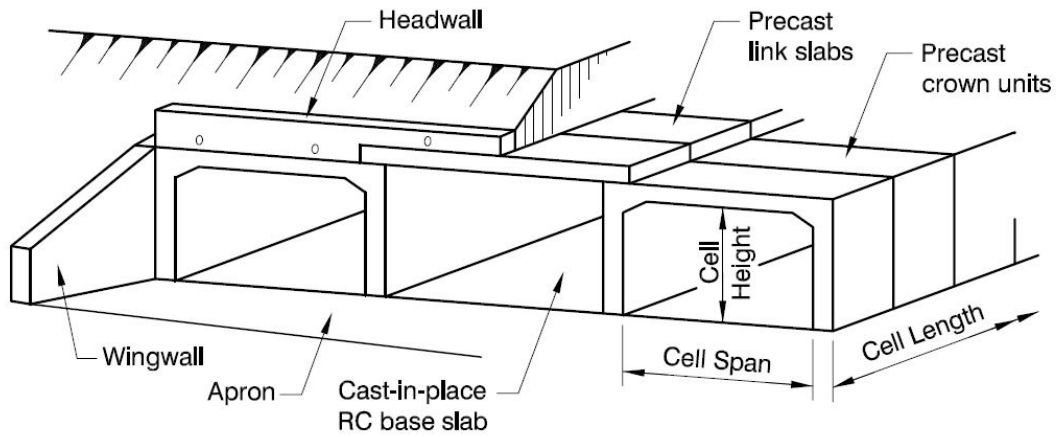


Figure B8 - Slab deck culvert terminology

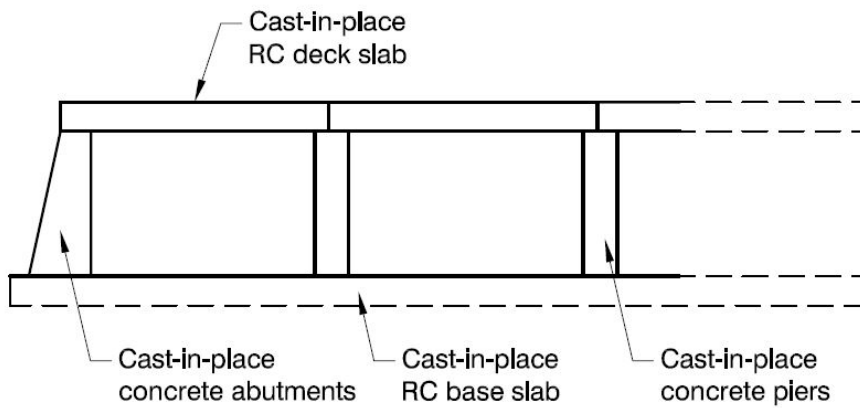


Figure B9 - Modular culvert terminology

