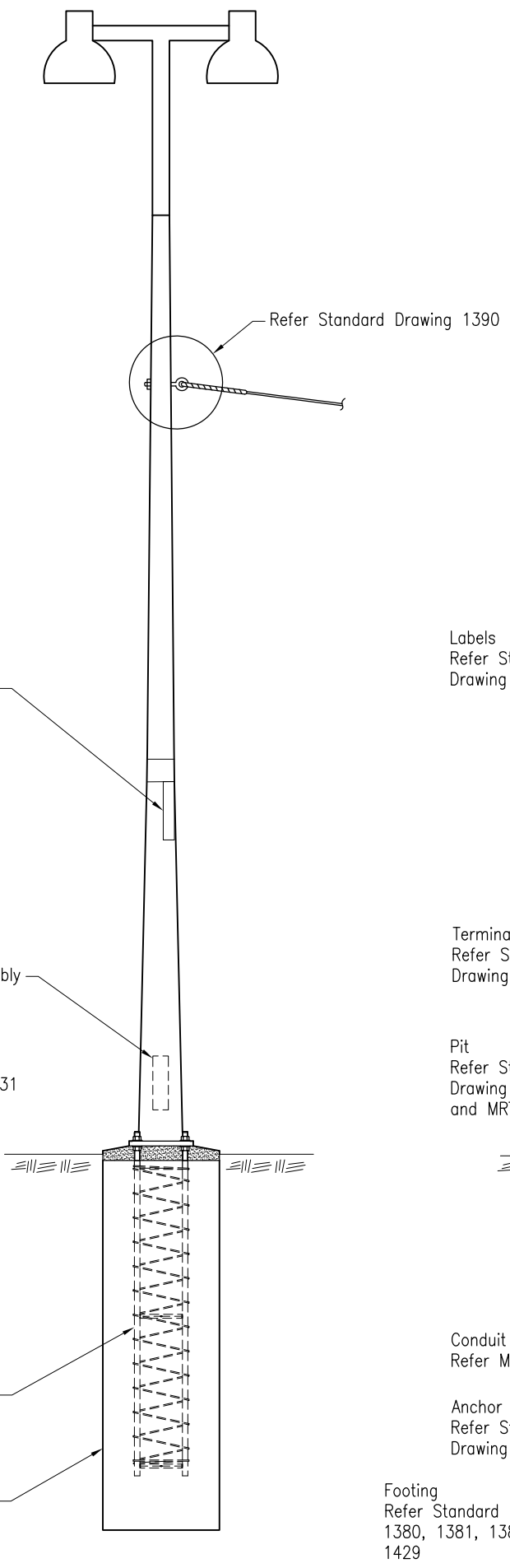
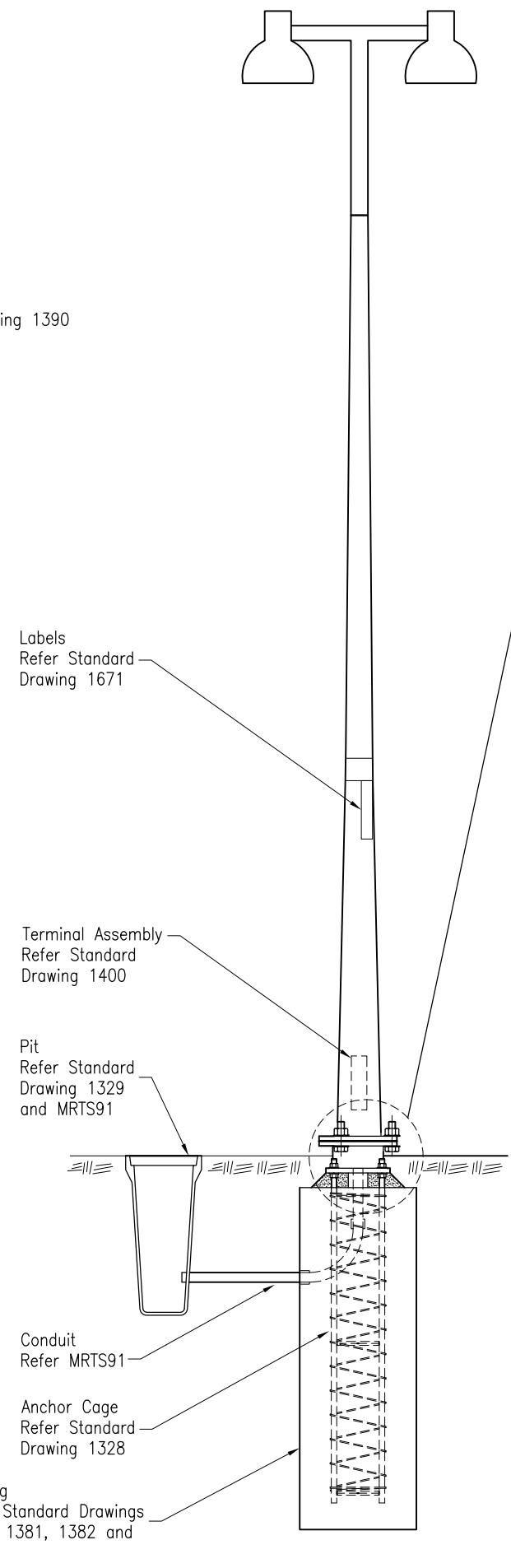


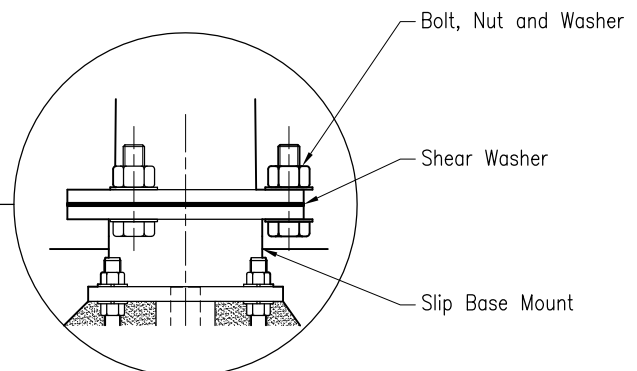
UNDERGROUND POWER SUPPLY
BASE PLATE MOUNTED



AERIAL POWER SUPPLY
BASE PLATE MOUNTED



UNDERGROUND POWER SUPPLY
SLIP BASE MOUNT



Refer Standard Drawings
1380, 1381, 1382, 1429
and MRTS94

NOTES:

1. Use high hatchway for poles in concrete barriers.

ASSOCIATED DEPARTMENTAL DOCUMENTS:
Standard Drawings
Specifications

- REFERENCED DOCUMENTS:
Standard Drawings:
- 1328 Road Lighting – Anchor Cage Fabrication Details
 - 1329 Road Lighting – Typical Physical Arrangement
 - 1380 Road Lighting – Slip Base Pole and Footing Installation Details for no Crossfall
 - 1381 Road Lighting – Slip Base Pole Installation Details for Crossfalls up to and including 1:6
 - 1382 Road Lighting – Slip Base Pole and Footing Installation Details for Crossfalls greater than 1:6 up to and including 1:3
 - 1390 Road Lighting – Base Plate Mounted Pole Aerial Connection Wiring Details
 - 1392 Road Lighting – Base Plate Mounted Pole and Footing Installation Details for Crossfalls up to and including 1:2
 - 1393 Road Lighting – Base Plate Mounted Pole and Footing Installation Details for Crossfalls greater than 1:2
 - 1395 Road Lighting – Base Plate Mounted Pole and Footing in Concrete Median Barrier Installation Details
 - 1399 Road Lighting – Base Plate Mounted Pole Wiring Details
 - 1400 Road Lighting – Slip Base Pole Wiring Details
 - 1409 Road Lighting – Luminaire Headframes Wiring Details excluding 4x400W Luminaires
 - 1410 Road Lighting – Luminaire Headframes Wiring Details 4 x 400W Luminaires
 - 1429 Road Lighting – Slip Base Pole and Footing Installation Details for Crossfalls greater than 1:6 up to and including 1:3 using Concrete Step Tread
 - 1431 Road Lighting – Base Plate Mounted Base Pole Wiring Details for Median Barriers
 - 1671 Traffic Signals/Road Lighting – Road Lighting Labels Installation

Departmental Standard Specifications:
MRTS91 Conduits and Pits
MRTS94 Road Lighting

Australian Standards:
AS/NZS 3000 Electrical Installations (Wiring Rules)

Department of Transport and Main Roads		 <small>© The State of Queensland (Department of Transport and Main Roads) 2015 http://creativecommons.org/licenses/by/3.0/au</small>	
ROAD LIGHTING			
HIGH MAST POLE	A3	Standard Drawing No	
	Not to Scale	1375	
		Date 4/15	
		A	B