

Consultation Summary Report



SUNSHINE MOTORWAY PACIFIC PARADISE TO COOLUM PRELIMINARY EVALUATION

Period of consultation: January to February 2023



Copyright

This publication is protected by the *Copyright Act 1968*.

© The State of Queensland (Department of Transport and Main Roads) 2024. All rights reserved.

Disclaimer

This publication is provided as a source of information only and the State of Queensland makes no statements, representations or warranties about its accuracy or completeness. To the extent permitted by law, the State of Queensland disclaims all responsibility for decisions or actions taken as a result of any data, information, statement or advice, expressed or implied, contained within and excludes all liability (including, without limitation, liability in negligence) for all expenses, losses, damages and costs that may be incurred.

Contact

Enquiries about the use of any material in this publication can be sent to the department at: copyright@tmr.qld.gov.au.

Overview

The Department of Transport and Main Roads (TMR) undertook community consultation from 30 January to 26 February 2023 to gather community feedback on the preferred option for duplication of a 10-kilometre section of the Sunshine Motorway between David Low Way, Pacific Paradise and Yandina-Coolum Road, Coolum Beach. This was the second phase of consultation as part of preliminary evaluation planning with phase one held between November and December 2021 to help develop the preferred option.

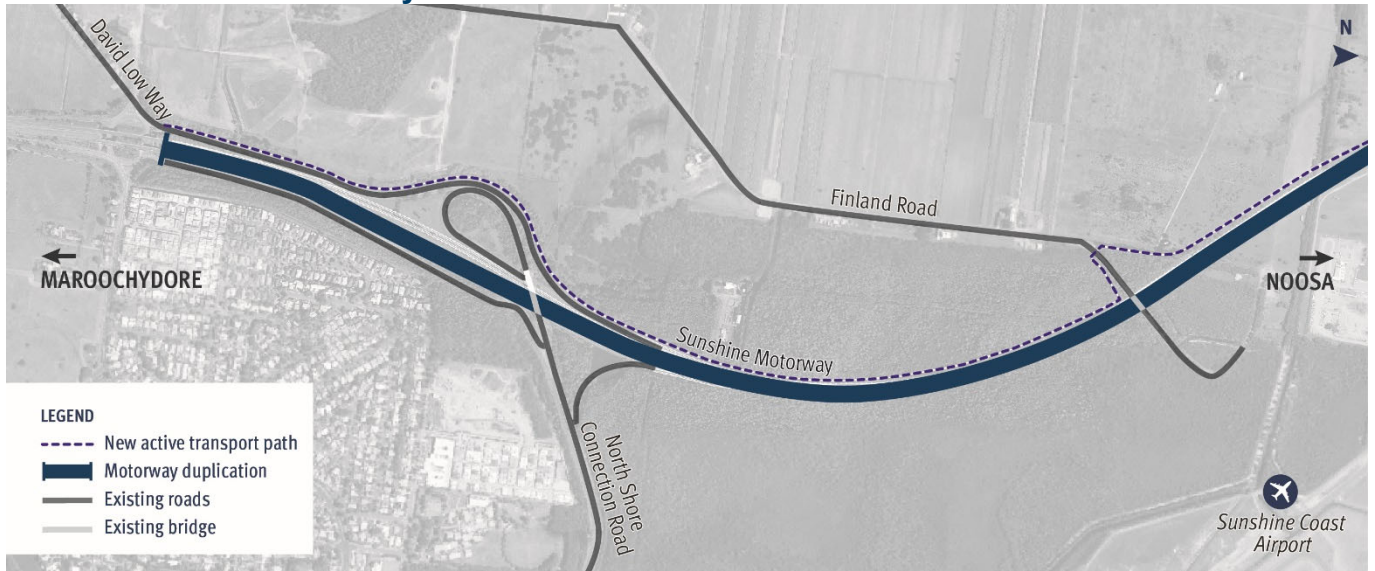
Preliminary evaluation planning investigated doubling the motorway's capacity from two to four lanes to help accommodate future growth and to improve safety, connectivity and efficiency. As part of the project, provisions for active transport, improvements to the Yandina-Coolum Road intersection, and enabling a potential future interchange at West Coolum Road was considered. This report shows feedback that will be considered during detailed planning.



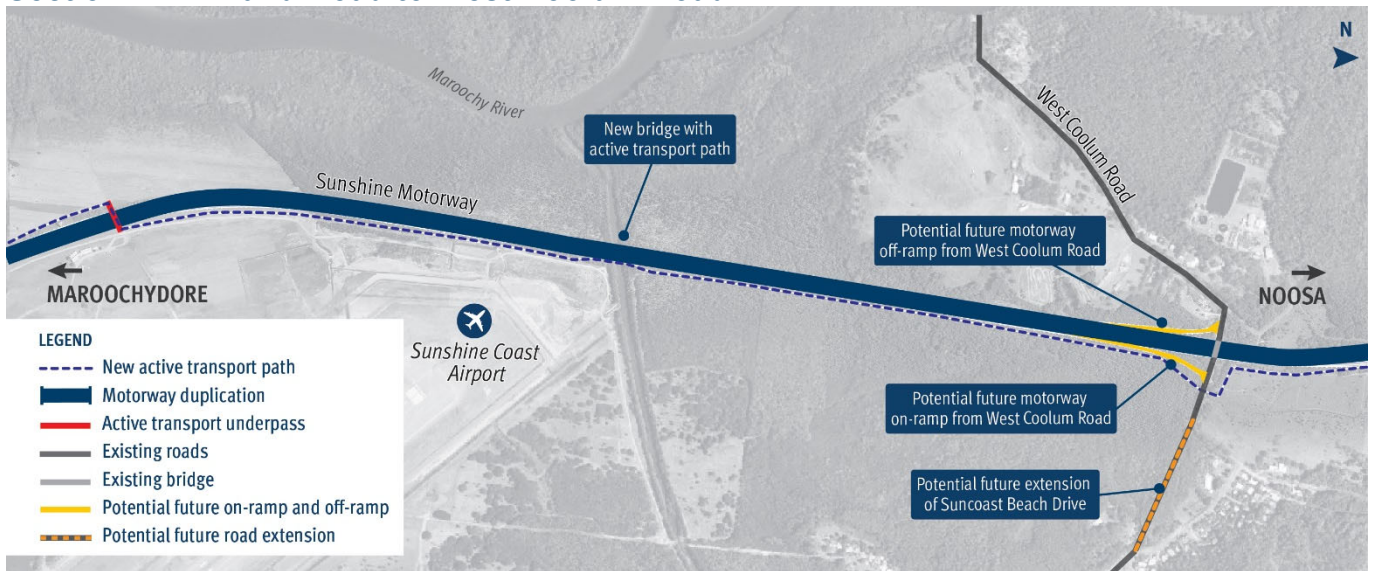
Image: TMR – Sunshine Motorway, south of Coolum.

TMR collected feedback through an online survey, via email and telephone calls, meetings with property owners and during a community drop-in session held in the project area. The online survey asked respondents to indicate their level of support for and comment on features of the preferred option, which was segmented into three sections for the purpose of consultation.

Section 1 – David Low Way to Finland Road



Section 2 – Finland Road to West Coolum Road



Section 3 – West Coolum Road to Yandina-Coolum Road



Community engagement



Consultation period

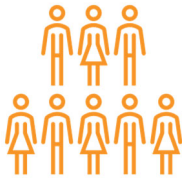
30 January to 26 February 2023



Online engagement

6,674 visitors

352 surveys completed



Community drop-in session

Market event at Coolum State School

110+ people attended



Post code location

75% 4573 (Coolum, Peregian, Yaroomba, Point Arkwright)

10% 4564 (Marcoola, Mudjimba, Pacific Paradise, Twin Waters)



Social media

One geotargeted TMR Facebook ad

2114 link clicks, 116 reactions, 107 comments, 22 shares



Email

219 sent

28 received



Letterbox drop

18300 flyers delivered



Property owners






Meetings held with impacted landowners.

Feedback summary

- Significant, strong support for the preferred option in general, particularly provision of four lanes and an interest in provision of six lanes along with extending duplication further north.
- Strong support for proposed grade separation (north-south overpass) at Yandina-Coolum Road interchange.
- Strong support for the possible West Coolum Road south facing ramps and Suncoast Beach Drive extension with requests this feature be included in the program to provide an alternative access to the motorway. Respondents considered this a key feature to alleviate congestion at Yandina-Coolum Road and South Coolum Road.
- Feedback regarding the West Coolum Road south-facing ramps included interest in potential increased local traffic volume and noise as well as some requests for including north-facing ramps.
- General support for traffic signals at nearby Yandina-Coolum Road, South Coolum Road and School Road intersection with concerns about impacts on traffic flow and impacts on existing congestion. A separate project is upgrading the Yandina-Coolum Road, South Coolum Road and School Road intersection.
- Suggestions for a variety of other treatments in the Yandina-Coolum Road, South Coolum Road, School Road area either in preference to or in conjunction with signalisation.
- A strong preference for further planning, design and construction phases to be progressed soon, with some requests to prioritise Yandina-Coolum Road interchange grade separation and West Coolum Road ramps.
- Strong support for active transport features with some preferences for locations east of the motorway, links to existing paths and requests for additional connections.
- Support for active transport features, including underpasses, and requests for safe crossings, separated bike and walking paths, lighting, flood mitigation, shade and seating.
- Environmental management to limit vegetation clearing, particularly at the proposed West Coolum Road ramps, inclusion of fauna fencing and crossings and consideration for significant conservation areas and the Blue Heart floodplain.
- Construction feedback focused on potential night works, noise and traffic impacts with requests to manage construction duration, traffic delays, impacts on other roads and maintaining access to areas such as the industrial estates.
- Traffic noise feedback included requests for mitigation measures such as quiet road surface material and noise barriers.
- Public transport commentary requested inclusion of features such as priority bus lanes, park 'n' ride facilities and rail.

Quantitative data is available on the level of support for the project sections through the online survey. Five thumbs indicated the highest level of support. The data indicates a generally strong level of support for the preferred option features in the 352 surveys completed.



	5 	4 	3 	2 	1 	No response
Overall, how strongly do you support the improvements proposed in Section 1 between David Low Way and Finland Road?	62.21%	15.90%	8.23%	1.71%	2.85%	9.10%
Overall, how strongly do you support the improvements proposed in Section 2 between Finland Road and West Coolum Road?	61.64%	15.34%	8.52%	2.85%	5.40%	6.25%
Overall, how strongly do you support the improvements proposed in Section 3 between West Coolum Road and Yandina-Coolum Road?	58.80%	14.20%	11.08%	3.42%	7.39%	5.11%
Overall, how strongly do you support the improvements proposed at the School Road, South Coolum Road, Yandina Coolum Road roundabout?	51.14%	13.92%	14.20%	4.26%	9.95%	6.53%

Next steps

Feedback will be considered by the project team during further development of the preferred option in the business case phase.

Contact us

- Email: NCR_Planning_Comms@tmr.qld.gov.au
- Phone: 07 54517055
- Website: www.tmr.qld.gov.au
- Postal address: TMR North Coast Region PO Box 1600 Maroochydore QLD 4558