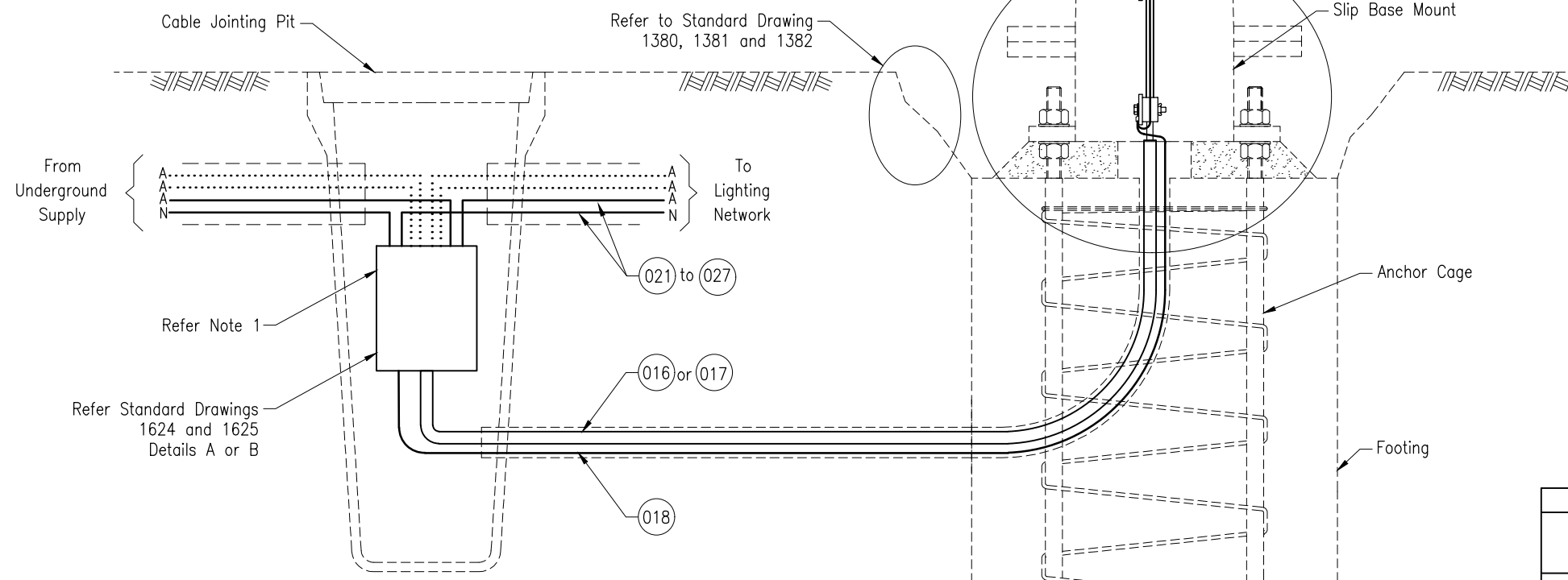


DETAIL B
RETROFIT TERMINAL
PANEL MOUNTING ARRANGEMENT

DETAIL A
STANDARD TERMINAL
PANEL MOUNTING ARRANGEMENT



WIRING DETAILS
(DIAGRAMMATIC SKETCH ONLY)

NOTES:

1. Only 1 junction box per pit.

ASSOCIATED DEPARTMENTAL DOCUMENTS:

- Standard Drawings
- Specifications

REFERENCED DOCUMENTS:

- Departmental Standard Drawings:
- 1323 Road Lighting – Luminaire Terminal Panel
 - 1389 Road Lighting – Slip Base Pole Male/Female Connectors Installation Details
 - 1624 Road Lighting – Junction Box Single Phase Wiring Details
 - 1625 Road Lighting – Junction Box Three Phase Wiring Details
 - 1699 Traffic Signals/Road Lighting/ITS – Parts List

Departmental Specifications:

- MRTS228 Electrical Switchboards
- MRTS256 Power Cables

Australian Standards:

- AS/NZS 3000 Electrical Installations (Wiring Rules)

⚠️ INSTALLATION OF CONDUITS AND PITS IS THE RESPONSIBILITY OF THE LICENSED ELECTRICAL CONTRACTOR

Department of Transport and Main Roads			
ROAD LIGHTING			
SLIP BASE POLE WIRING DETAILS		A3	Standard Drawing No
		Not to Scale	1400
			Date 2/2024