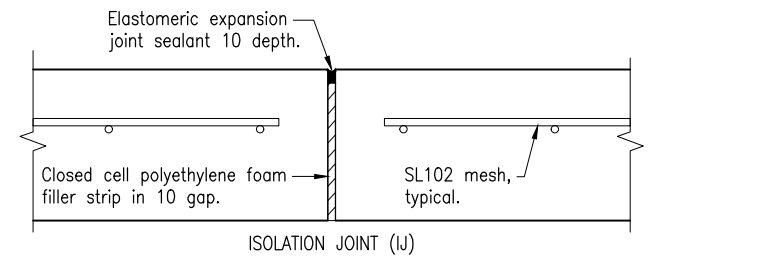
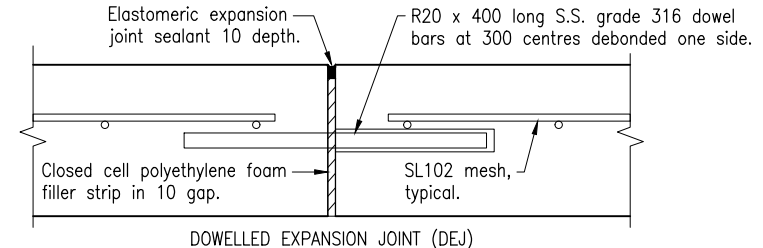


CAST INSITU SLAB WITH PLANK CONNECTION DETAIL

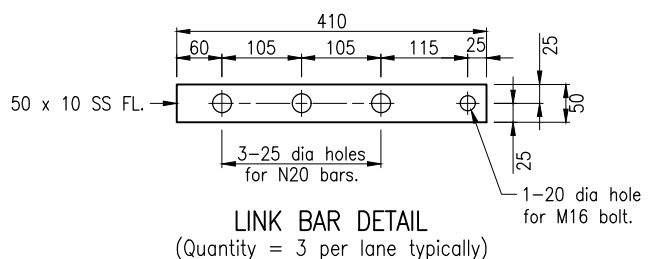


ISOLATION JOINT (IJ)

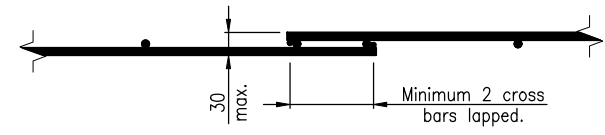


DOWELLED EXPANSION JOINT (DEJ)

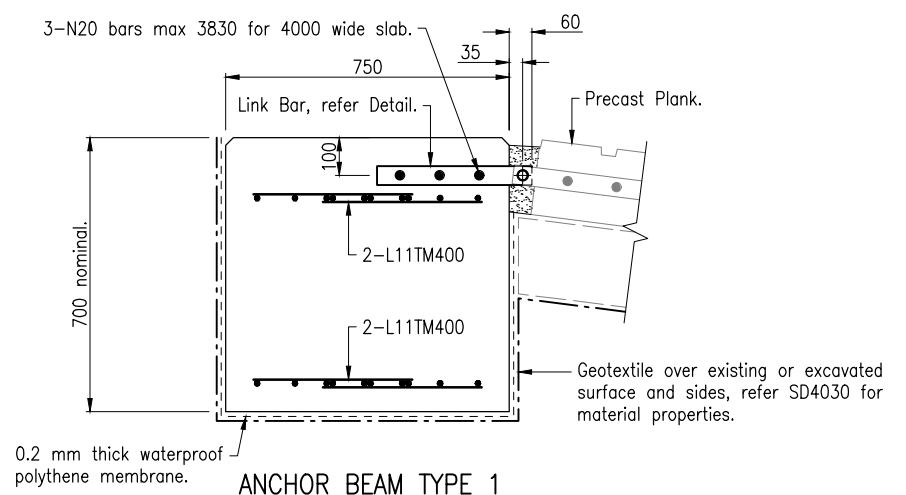
SLAB JOINT DETAILS



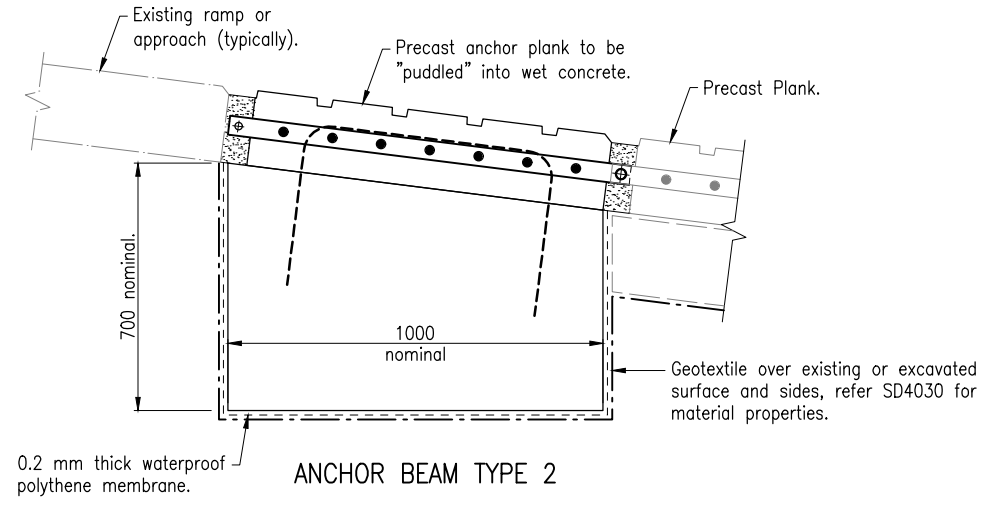
LINK BAR DETAIL  
(Quantity = 3 per lane typically)



REINFORCEMENT MESH LAP DETAIL  
(Shown for SL102 side lap)



ANCHOR BEAM TYPE 1



ANCHOR BEAM TYPE 2

NOTES:

- APPLICATION OF THIS STANDARD DRAWING: This Standard Drawing shall only be used:
  - In conjunction with MRTS300, and
  - when referenced by a certified project drawing for a boat ramp designed in accordance with the TMR design manual "Design Criteria for Boat Ramps".
- CONSTRUCTION OF BOAT RAMP shall be in accordance with MRTS300.
- DESIGN LOADING: These slab and anchor details are designed for a multi axle trailer of maximum 2 tonnes per axle at minimum 750 centres, and shall only be used for recreational boating facilities with a signed maximum load limit of 8 tonnes per lane.
- 10 mm GRAVEL BLINDING LAYER shall only be used under cast insitu concrete slabs. Blinding layer is not to be used under precast planks.
- CONCRETE: shall be S50/20 designed, placed, and cured in accordance with MRTS300.
- REINFORCING STEEL:
  - Reinforcing steel to be in accordance with MRTS71 and MRTS300.
  - Deformed bars Grade D500N.
  - Mesh Grade D500L.
  - Minimum cover to reinforcing steel shall be 60 unless shown otherwise.
  - Reinforcing bars, reinforcing mesh and ties shall be hot dip galvanized to AS/NZS 4680.
- LAPPING OF REINFORCEMENT: Reinforcement shall be single lapped only.
- STAINLESS STEEL: All stainless steel shall be Grade 316. Link bars shall be Grade 316 stainless steel flats to ASTM A276. All sharp edges shall be removed and neatly finished.
- SURFACE FINISH: Trafficable surface for vehicles and pedestrians shall be medium broom finished at 90° to the boat ramp control line. All exposed concrete shall have R20 trowelled edges unless shown otherwise.
- CURING: An approved curing compound shall be applied immediately following surface finishing.
- FORMWORK STRIPPING: Formwork shall not be removed at less than five (5) days.
- DIMENSIONS are in millimetres unless shown otherwise.

Referenced Documents

Departmental Specifications  
MRTS300 Construction of Boat Ramps  
Design Criteria for Boat Ramps

Australian and International Standards  
AS/NZS 4680 Hot-dip Galvanized (Zinc) Coatings on Fabricated Ferrous Articles  
ASTM A276 Standard Specification for Stainless Steel Bars and Shapes

Department of Transport and Main Roads				© The State of Queensland (Department of Transport and Main Roads) 2024 <a href="https://creativecommons.org/licenses/by/4.0/">https://creativecommons.org/licenses/by/4.0/</a>	
BOAT RAMP CONSTRUCTION				A3	Standard Drawing No
CONCRETE SLAB AND JOINT DETAILS (STEEL REINFORCED)		Not to Scale	4032		
		A	Date 3/2024		