

# Annual Report - (2021 – 2022) Management of Environmental Offsets

Toowoomba Second Range Crossing Project

November 2022

PROJECT DETAILS			
<b>TMR Region</b>	Darling Downs District		
<b>Project Name / Description</b>	Toowoomba Second Range Crossing Project – Management of Environmental Offset blocks		
<b>Project Number</b>	11972		
<b>Project Location</b>			
<b>Local Government Area</b>	Lockyer Valley Regional Council	<b>QTRIP WBS</b>	0265018A003.OPEX.3
<b>Road No</b>	NA	<b>DMS Reference</b>	450/03287

VERSION HISTORY			
Version No.	Date	Changed by	Nature of Amendment

REPORT PREPARATION			
I have prepared this report based on the best information available at the time. I have taken into account, to the fullest extent possible, all actual and potential environmental impacts of the project.			
<b>Name</b>	Peter Sparshott	<b>Signature</b>	
<b>Position</b>	Environmental Officer	<b>Date</b>	
REPORT REVIEW			
<b>Name</b>	Adam Garvin	<b>Signature</b>	
<b>Position</b>	Manager Program Delivery	<b>Date</b>	
PROJECT MANAGER ACCEPTANCE			
I agree that this report has been prepared based on the project scope at the time, and accept responsibility for ensuring any future changes to the scope are appropriately assessed.			
<b>Name</b>	Dereck Sanderson	<b>Signature</b>	
<b>Position</b>	District Director – Darling Downs District	<b>Date</b>	



© The State of Queensland (Department of Transport and Main Roads) 2017

<http://creativecommons.org/licenses/by/3.0/au>

**Note:** This Rapid Environmental Risk Assessment shall remain current for 12 months. A review will be required after this time should further subsequent assessment or management actions not be undertaken.

# Contents

<b>1</b>	<b>Introduction</b>	<b>3</b>
<b>2</b>	<b>Executive Summary</b>	<b>3</b>
<b>3</b>	<b>Project Location</b>	<b>3</b>
<b>4</b>	<b>Management Objectives of the offset area</b>	<b>4</b>
<b>5</b>	<b>Monitoring Locations and Requirements</b>	<b>4</b>
<b>6</b>	<b>Progress Data</b>	<b>5</b>
<b>7</b>	<b>Inputs</b>	<b>6</b>
<b>8</b>	<b>Site Photos</b>	<b>7</b>
8.1	Monitoring Point 1	7
8.2	Monitoring Point 2	8
8.3	Monitoring Point 3	8
8.4	Monitoring Point 4	9
8.5	Monitoring Point 5	10
8.6	Monitoring Point 6	11
8.7	Monitoring Point 7	12
8.8	Monitoring Point 8	13
8.9	Monitoring Point 9	14
8.10	Monitoring Point 10	15
8.11	Monitoring Point 11	16
8.12	Monitoring Point 12	17
8.13	Monitoring Point 13	18
8.14	Monitoring Point 14	19
8.15	Monitoring Point 15	20
8.16	Monitoring Point 16	21

# Table of Figures

Figure 1	Project Location	3
Figure 2	Summary table baseline data compared to the current year	7

# 1 Introduction

This annual report is a requirement of the Voluntary Declaration (V-Dec) Management Plan. The conservation land has been secured as part of the Toowoomba Second Range Crossing (TSRC) project, which has been conditioned to secure a number of offset areas to meet its federal government obligation in relation to Collared Delma (*Delma torquata*).

# 2 Executive Summary

This 2021 - 2022 progress report recorded vegetation growth in what would be considered an exceptionally wet period of time. At the time of writing this report the Toowoomba area was on track to record one of the highest rainfall totals on record. The high rainfall has resulted in increased vegetation growth of both native and exotic vegetation but also made it very difficult to apply chemical herbicides throughout the reporting period due to access issues. Out of the 16 monitoring points (MP) 11 were assessed to have meet the key performance indicators and 4 had not yet reached the performance indicators. Four of the priority sites (MP1 - MP5) were included in the 11 sites that had achieved the key performance indicators. MP 4 had increased it mid- stratum percentage of non-native cover to over 10% due to lantana growth.

A total of \$30K was spend on the offset blocks as detailed in section 7.

Due to the very steep and rocky track which leads to monitoring point 3, it was decided that both maintaining the track and taking spray rigs along the track posed an unacceptable risk to health of contract workers along with TMR staff. It was decided that this monitoring point would no longer be included in data collection.

# 3 Project Location

The Declaration Area incorporates the entirety of the following four (4) cadastral allotments (refer Figure 1): Lot 13 on SP186713 Lot 1 on SP206634 Lot 262 on CC316 Lot 8 on SP206636



Figure 1 Project Location



## 4 Management Objectives of the offset area

The following description has been taken from Section 3 of the VDec Management Plan (TMR internal report 2017) "The overarching management intent for the Declaration Area is the removal of weeds and the protection of habitat for the threatened Collared Delma (*Delma torquata*) as conditioned by Condition 2 of the EPBC referral decision (EPBC 2003/1143). Populations of the Collared Delma are known to occur within the declaration area. The declaration area has also been incorporated into the Collared Delma Translocation Management Plan as it has provided translocation recipient locations for Collared Delma captured and relocated as part of the TSRC project activities. As part of these activities, it is known that one-hundred and three (103) individual Collared Delma are present within the V-Dec areas. The successful implementation of the proposed management mechanisms contained within the V-Dec management plan will assist with the creation of self-sustaining, areas of high quality Collared Delma habitat, facilitating their persistence within the local landscape and spread throughout the declaration area. The intent of the V-Dec management plan under the Vegetation Management Act 1999 (VMA), allows landowners to protect areas of native vegetation otherwise not protected by the VMA. Areas of remnant vegetation will be managed to enhance and sustain their ecological conditions with an emphasis on the management of weeds and other threatening processes in areas that are known or considered likely to support local populations of the Collared Delma."

## 5 Monitoring Locations and Requirements

In total sixteen (16) monitoring locations that have been established across the Declaration Area.

- 1 -27.503661 151.991167 Priority Area
- 2 -27.494897 151.991597 Priority Area
- 3 -27.496192 151.985854 Priority Area
- 4 -27.503844 151.976684 Priority Area
- 5 -27.506316 151.974616 Priority Area
- 6 -27.504957 151.991624 Non-priority Area 1
- 7 -27.498301 151.989144 Non-priority Area 1
- 8 -27.502734 151.988107 Non-priority Area 1
- 9 -27.506956 151.974218 Non-priority Area 1
- 10 -27.507574 151.993065 Non-priority Area 2
- 11 -27.496766 151.990678 Non-priority Area 2
- 12 -27.494405 151.989557 Non-priority Area 2
- 13 -27.495113 151.987808 Non-priority Area 2
- 14 -27.502806 151.985374 Non-priority Area 2

15 -27.505080 151.977400 Non-priority Area 2

16 -27.502780 151.979130 Non-priority Area 2

The following information is to be collected within a radius of 20m around the monitoring point:

- A photographic record facing north, east, south and west
- Percentage cover of non-native species present within the canopy stratum, mid-storey stratum, and ground stratum
- Notes on the status of plant infestations (species present, new infestations or contractions, etc.), with particular attention to plants identified as Schedule 2 plants under the Biosecurity Act 2014
- Native plant species richness
- Presence of any fauna habitat features i.e. nests or presence of species

#### **Requirements for Priority Areas :**

Minimum of 90% removal of *Lantana camara*, and other Category 2 Restricted Matters declared under the provisions of the Biosecurity Act 2014 Qld (BS Act)

#### **Requirements for Non -priority Areas :**

Minimum yearly reduction of 10% of weed infestation in areas known to support conservation significant species (ie Non-priority Area 1 – refer V-Dec Management Plan) (overall reduction to not more than 40% cover is considered to have achieved the intent of the V-Dec management plan).

Minimum yearly reduction of 5% of weed infestations in areas not known to support conservation significant species (ie Non-priority Area 2) (overall reduction to not more than 60% cover is considered to have achieved the intent of the V-Dec management plan).

\*\* For *Lantana montividentis*, total cover is not to exceed 30% of any vegetation stratum in any Priority Area.

## **6 Progress Data**

Figure 2 shows the current years data and compares to the baseline data. The colour coding indicates if the weed treatments meet the minimum requirements of the VDec Management Plan and the ability for TMR to end its commitments relating to the plan. **Green** indicates the current years vegetation survey satisfies the end requirements of the VDec management plan, **Orange** indicates the current years vegetation survey does not satisfy the end requirements of the VDec management plan but meets the yearly reduction targets and **Red** indicates the current years vegetation survey does not satisfy the end requirements of the VDec management plan or the yearly reduction targets

Survey Data	Site Number															
	Priority Sites					Non-priority Area 1					Non-priority Area 2					
	1	2	3	4	5	6	7	8	9	10	11	12	13	14	15	16
<b>% Cover Non Native C,M,G</b>																
Baseline Data	0,10,0	0,40,30	0,50,60	0,50,0	0,40,15	0,5,0	0,65,20	0,70,0	0,70,10	0,85,60	0,30,60	0,95,5	0,100,5	0,90,0	0,30,0	0,75,30
2021 - 2022	0,0,0	0,0,5	NA	0,15,0	0,0,0	0,0,0	0,45,10	0,5,5	0,5,5	0,0,5	0,15,5	0,5,10	0,80,5	0,30,20	0,40,20	0,30,20
<b>Native Plant Richness</b>																
Baseline Data	4,7,8	2,5,8	3,4,17	2,4,7	3,5,8	5,6,10	2,4,13	2,5,4	3,4,7	4,8,4	1,4,5	2,3,10	1,1,3	1,3,0	3,4,8	4,5,6
2021 - 2022	4,6,6	2,5,12	NA	2,4,13	3,5,13	5,6,10	3,4,14	3,5,6	4,5,11	4,5,11	1,4,12	1,3,13	1,2,7	1,3,4	3,4,12	6,5,9
<b>Weed Notes</b>																
Baseline Data	LC	LC LM	LC LM AR	LC,TP	LC,TP	LC	LC	LC	LC,LM	LC,LM	LC,S	LC,LM	LC,LM	LC	LC	LC
2021 - 2022	Nil noted	LC	NA	LC	LC	Nil noted	LC, *	LC	LC,LM	LC,LM	LC	LC, *	LC	LC	LC	NA
<b>Fauna Features</b>																
Baseline Data	Nil noted	Nil noted	Nil noted	Nil noted	Nil noted	Nil noted	Nil noted	Nil noted	Nil noted	Nil noted	Nil noted	Nil noted	Nil noted	Nil noted	Nil noted	Nil noted
2021 - 2022	Nil noted	Nil noted	Nil noted	Nil noted	Nil noted	Nil noted	Nil noted	Nil noted	Nil noted	Nil noted	Nil noted	Nil noted	Nil noted	Nil noted	Nil noted	Nil noted
Key : G - Ground layer, M- Mid stratum, C - Canopy, LC - Lantana camara, LM - Lantana montevidensis, AR - Annual Ragweed, TP-Tree Pear, S-Sporobolus spp.																
* Many annual weeds present																

Figure 2 – Summary table baseline data compared to the current year

## 7 Inputs

The following inputs were made during the 2021 – 2022 year.

- Track maintenance – Delivered through RoadTek contracting \$ 10K
- Weed management – Delivered through Advantage Weed Services \$ 20K

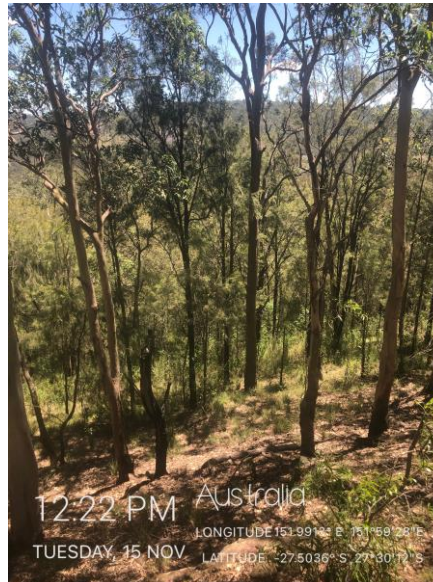
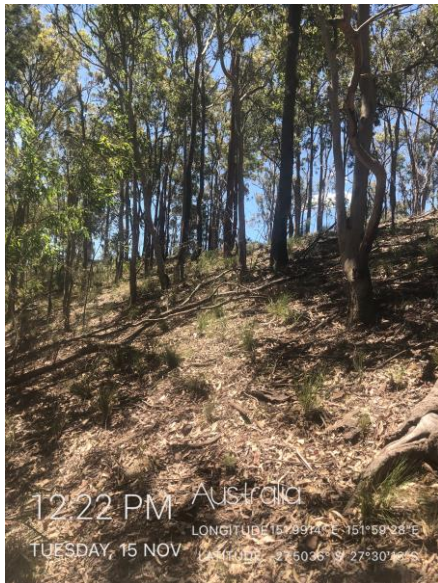
Forecasted expenditure for the 2022 – 2023 year

- Track maintenance – Delivered through RoadTek contracting \$ 10K
- Weed management – Delivered through Advantage Weed Services \$ 25K

## 8 Site Photos

Photos show aspects of the monitoring points from North, East South and West.

### 8.1 Monitoring Point 1





## 8.2 Monitoring Point 2

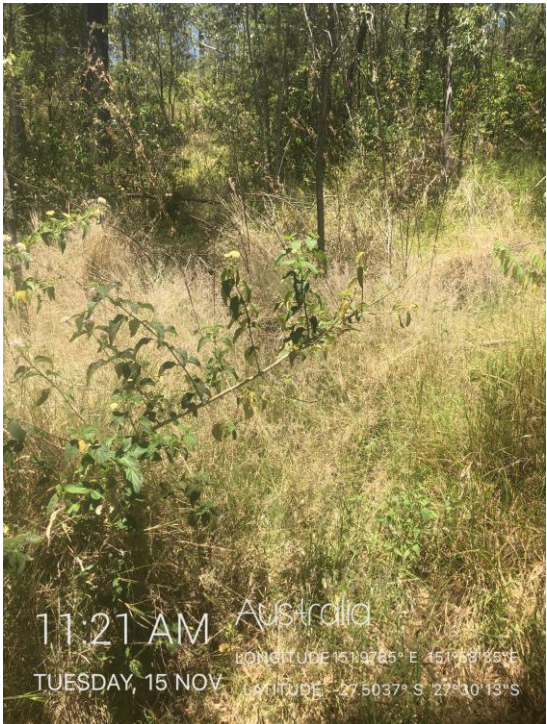
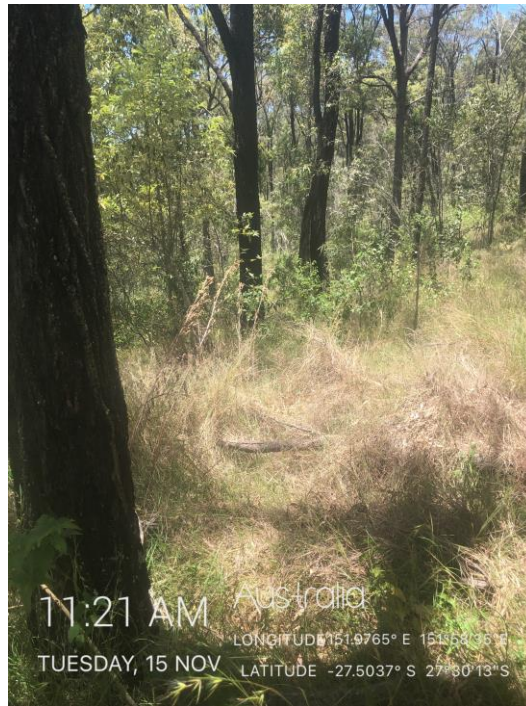


## 8.3 Monitoring Point 3

Due to safety issues regarding access of this point no data was collected



## 8.4 Monitoring Point 4



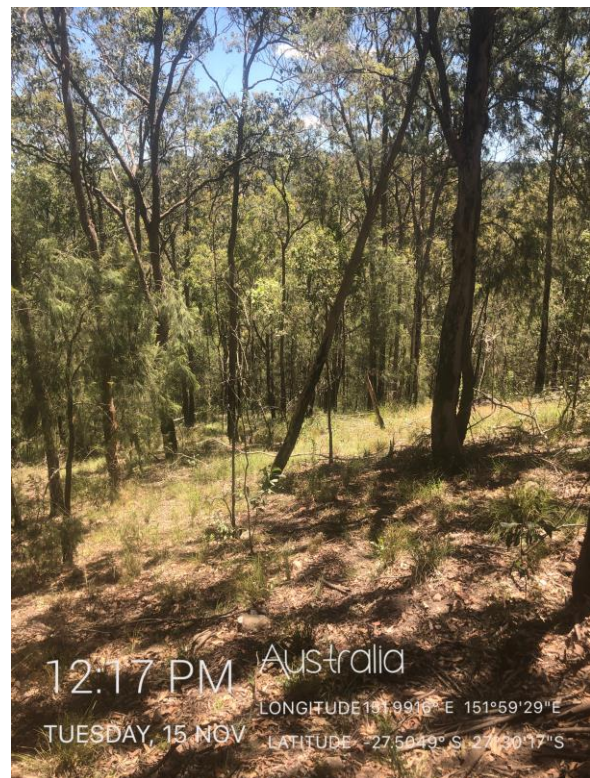


## 8.5 Monitoring Point 5



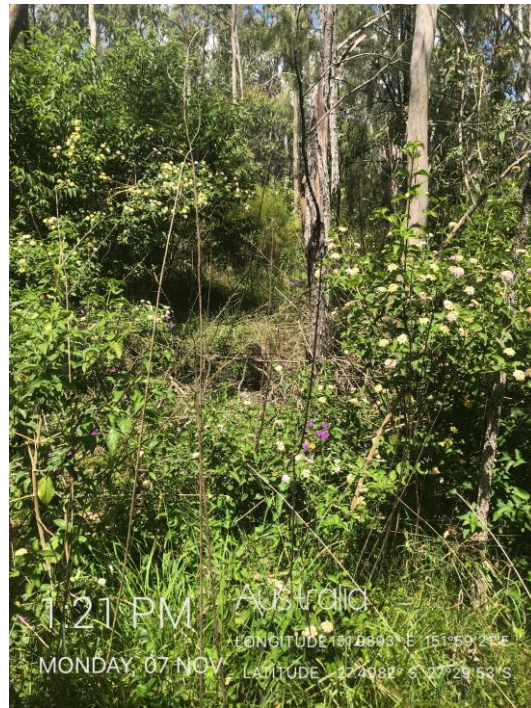


## 8.6 Monitoring Point 6



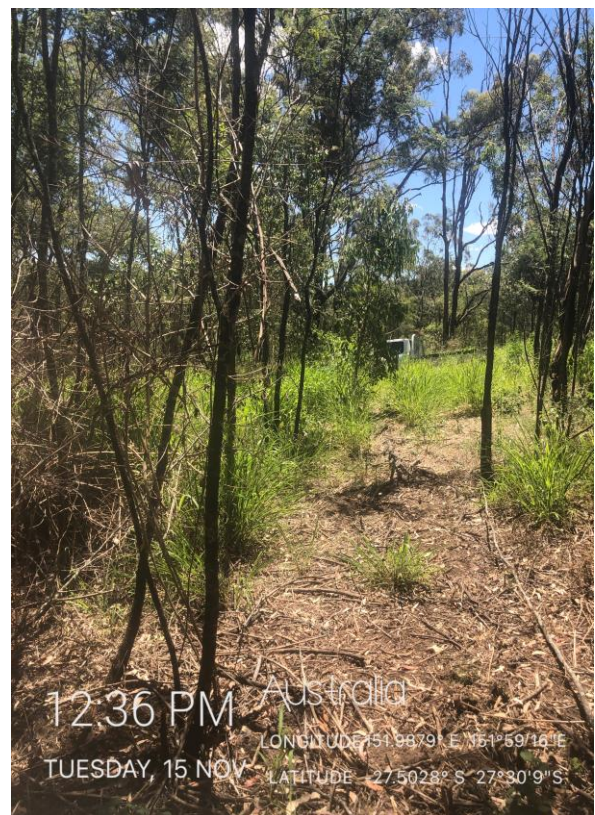
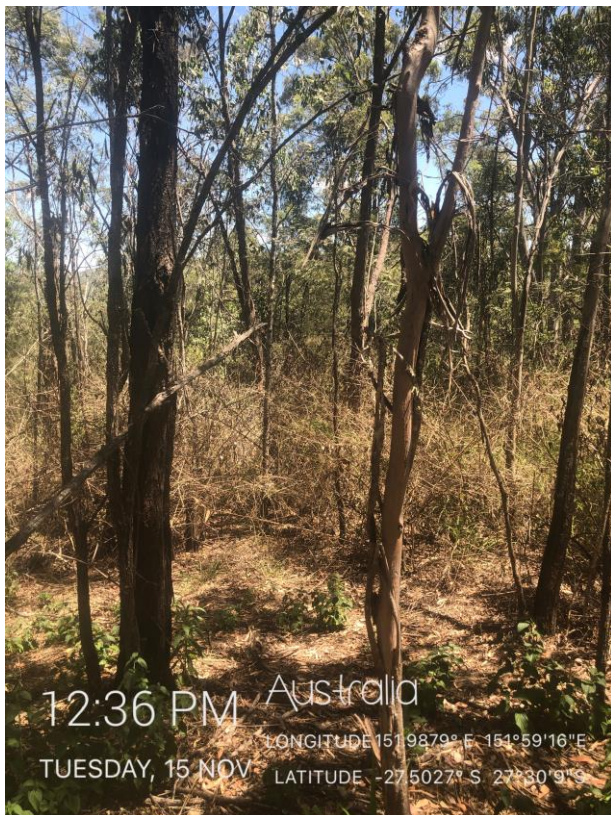
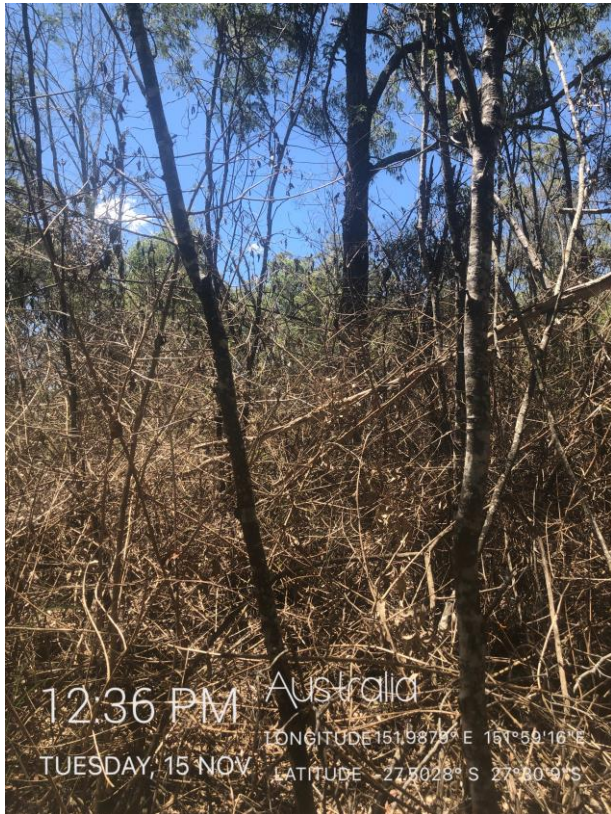


## 8.7 Monitoring Point 7



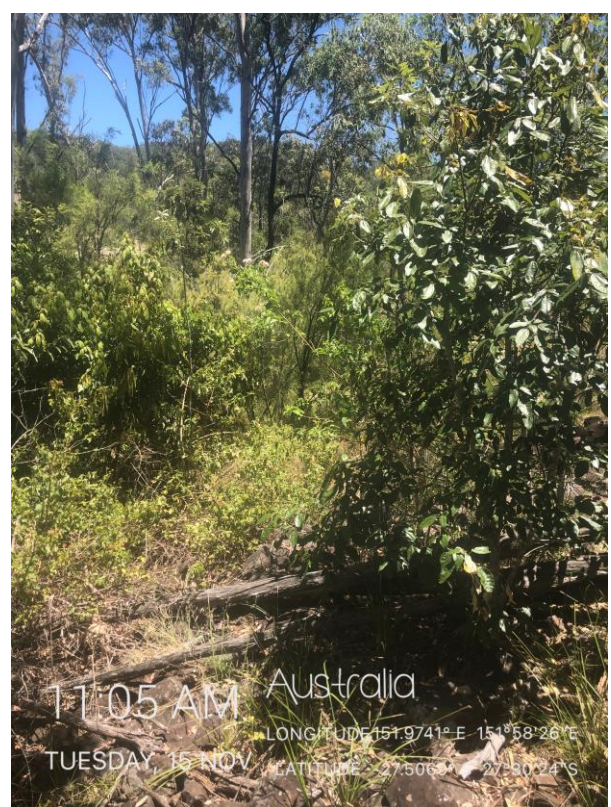
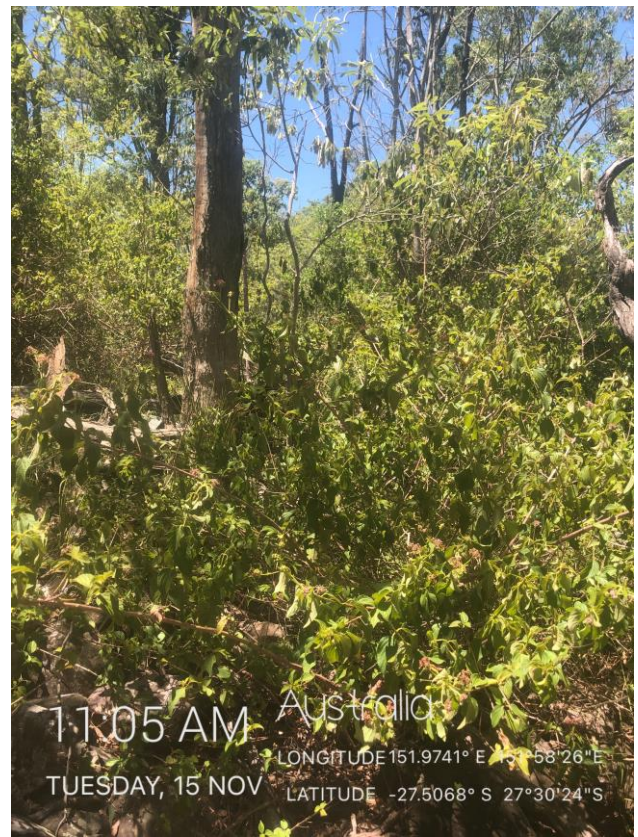


## 8.8 Monitoring Point 8



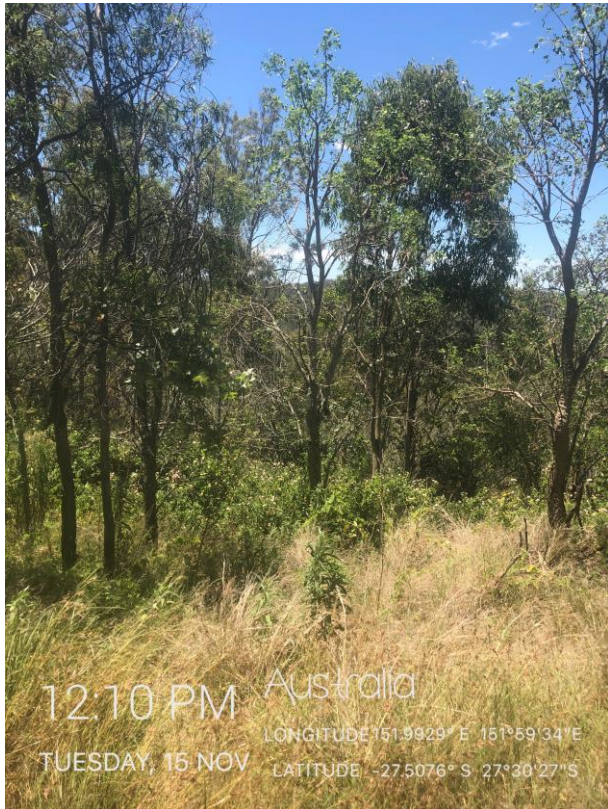


## 8.9 Monitoring Point 9



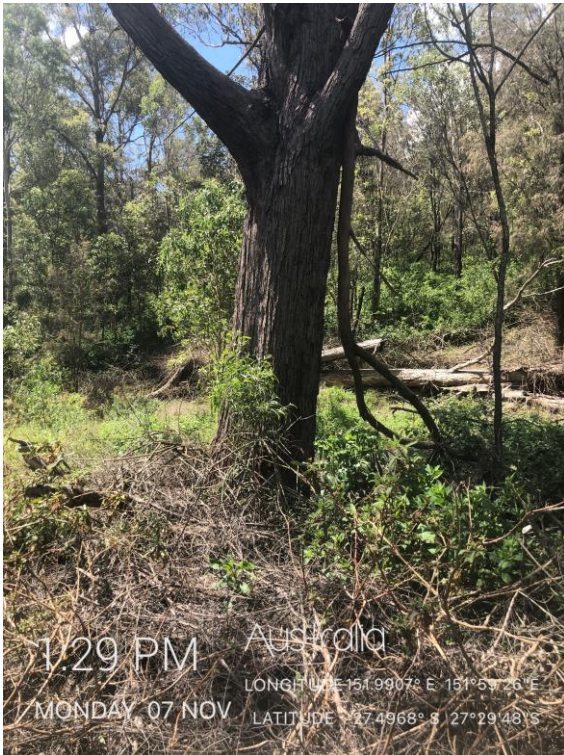


## 8.10 Monitoring Point 10



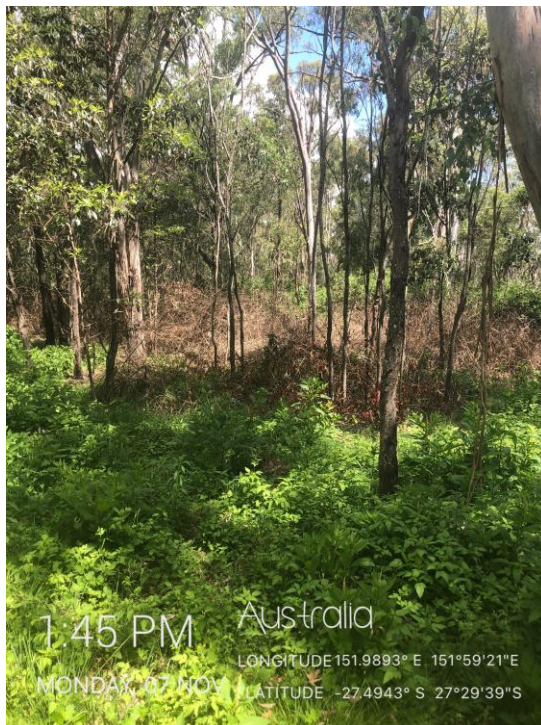


## 8.11 Monitoring Point 11





## 8.12 Monitoring Point 12



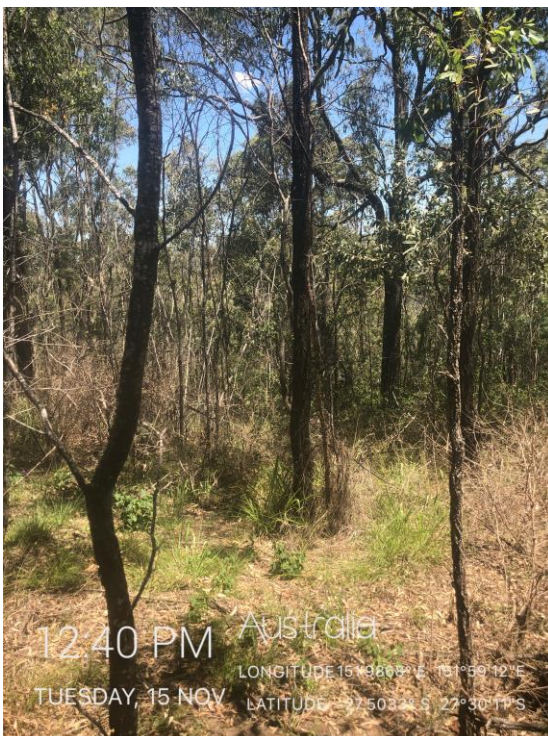
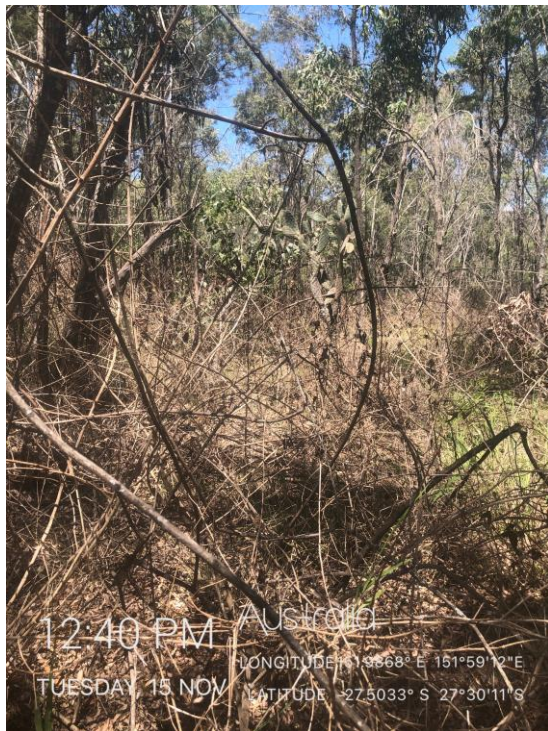


## 8.13 Monitoring Point 13



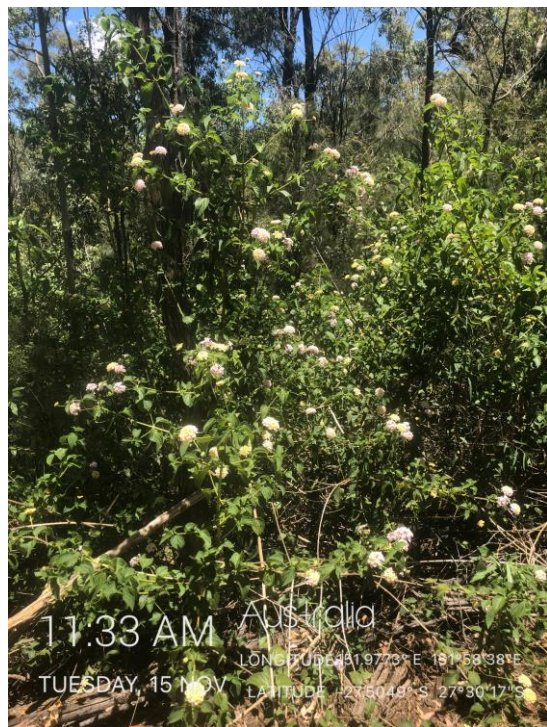
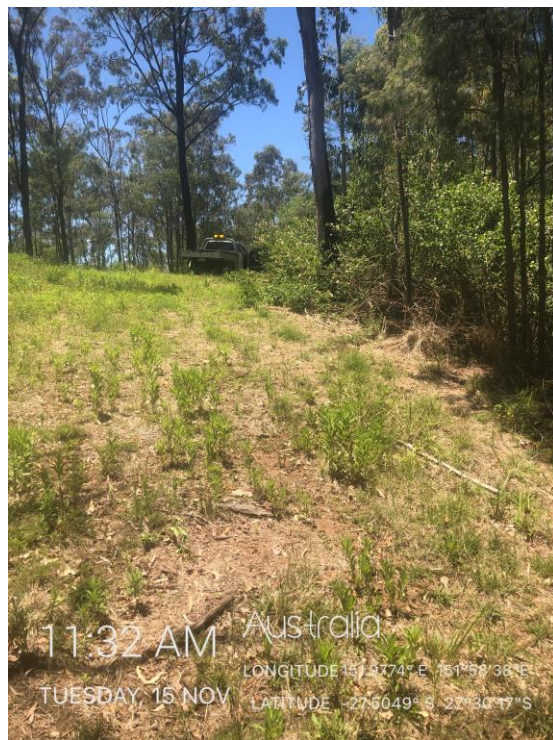


## 8.14 Monitoring Point 14





## 8.15 Monitoring Point 15





## 8.16 Monitoring Point 16

