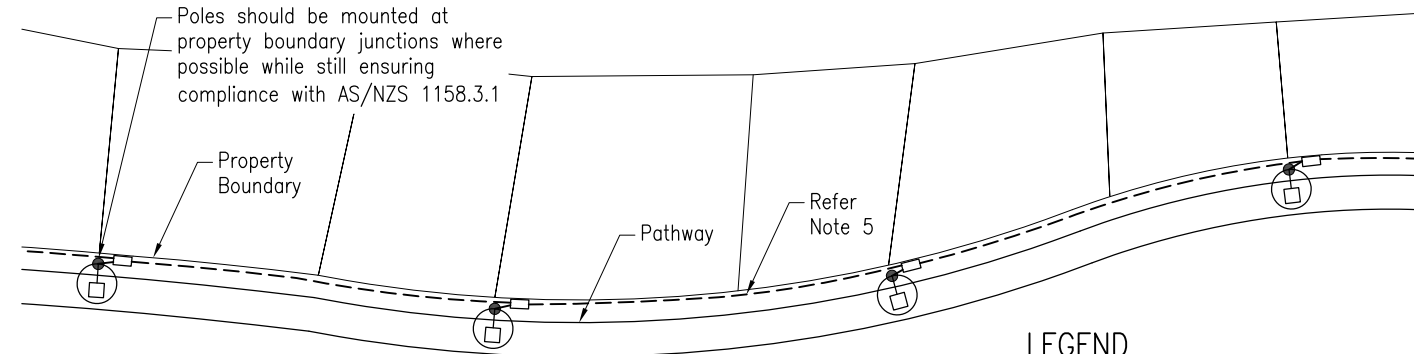


PREFERRED PIT AND POLE ORIENTATION



PREFERRED LAYOUT RELATIVE TO PROPERTY BOUNDARY

LEGEND

- Proposed Pit
- Equipment to be installed
- Pathway luminaire
- Pole low voltage or pathway lighting pole
- Proposed underground conduit

NOTES:

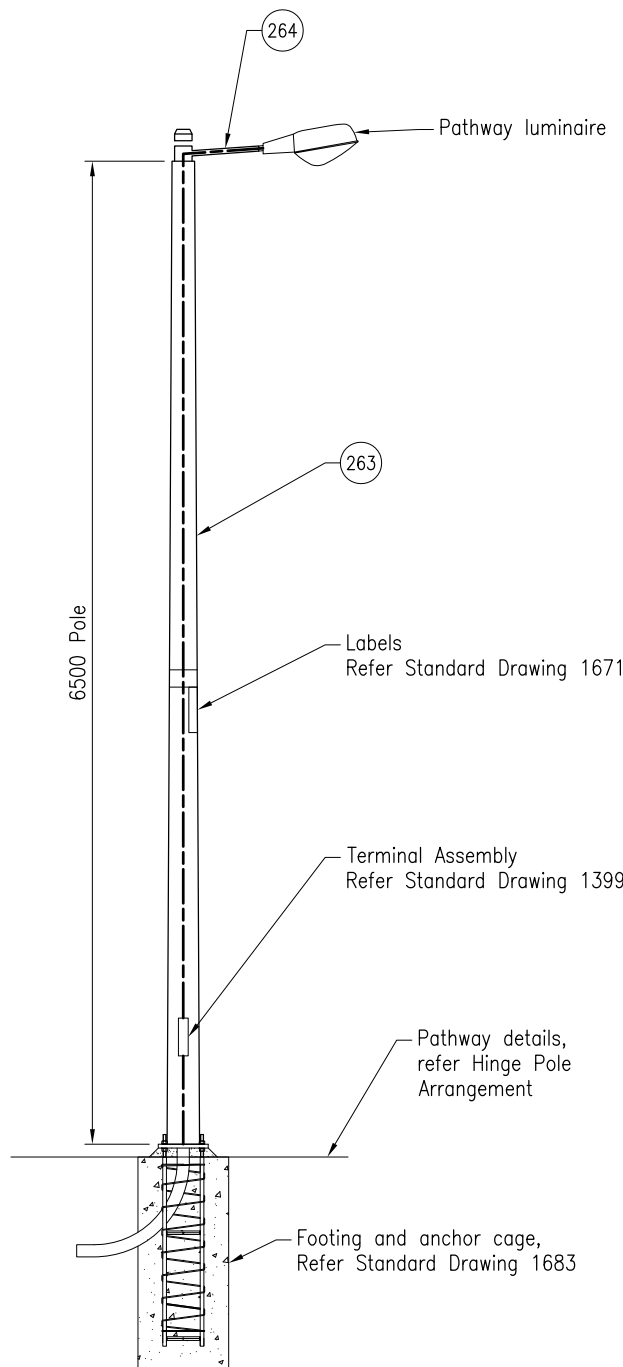
1. SCOPE: This Standard Drawing applies to the following light poles:—
 - 5.0m pole Hinged or See-Saw type with integral outreach.
 - 6.5m pole with integral outreach.
 Where an alternative pole, outreach, luminaire combination is proposed this shall be approved by the Principal at the planning stage.
2. This Rate 3 arrangement shall only be used where Rate 1 or 2 is not attainable. Refer to Traffic Road Use Manual.
3. POLE SPACING:
 - General To comply with AS/NZS 1158.3.1 Category P3 (minimum). Category may vary where directed by the Principal.
 - Connecting Elements (e.g. Pedestrian Bridges and Ramps) to comply with AS/NZS 1158.3.1 category P8.
4. POLE OFFSET:
 - a) For paths 3000mm or less wide, offset lighting poles 2000mm from the path Centreline to the face of the pole. For paths >3000mm wide, offset lighting poles minimum 500mm from edge of path to the face of the pole.
 - b) On curves $\leq R10m$, locate poles on inside of curve, where practicable.
5. MOUNT TYPE: Ragbolt assembly with standard pole base plate.
6. RETICULATION: Pits – Install (116) or (127) at every pole unless directed otherwise. Refer MRTS91.
7. CONDUIT to be minimum 80mm, Heavy Duty, Rigid, UPVC, Orange and installed in accordance with Standard Drawing 1149.
8. Electrical installations shall comply with TMR Rate 3 Electrical Design requirements.
9. POLE NUMBER shall be clearly visible from path in accordance with Standard Drawing 1671.
10. All dimensions in millimetres unless shown otherwise.

ASSOCIATED DOCUMENTS:

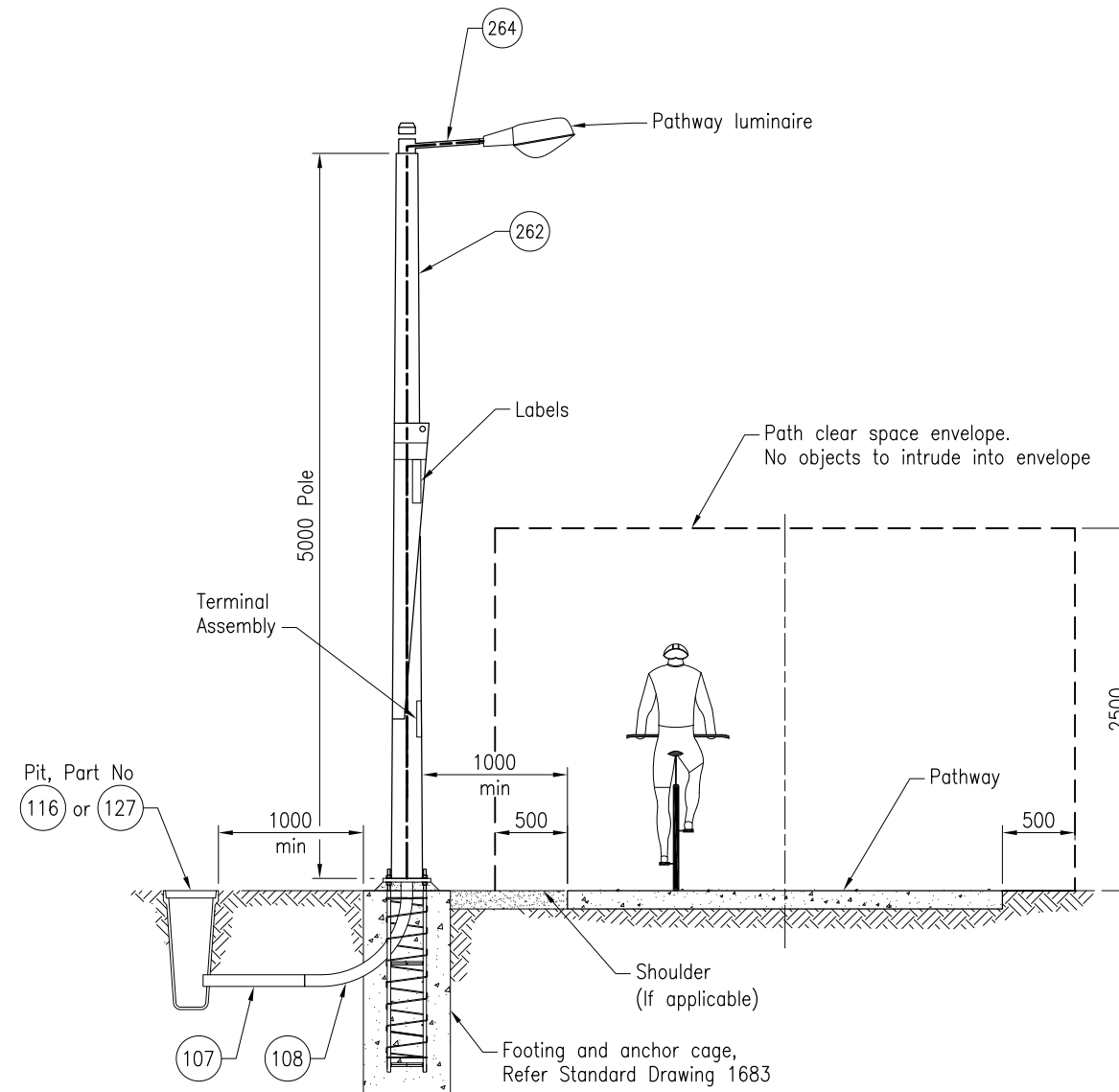
- Traffic and Road Use Management Manual (TRUM)
 - Volume 4 Part 2 Road Lighting Maintenance
 - Volume 4 Part 3 Electrical Design for Roadside Devices
 - Volume 4 Part 4 Road lighting Dome Junction Box Assembly

REFERENCED DOCUMENTS:

- Departmental Standard Drawings:
- 1149 Traffic Signals/Road Lighting/ITS – Installation of Underground Electrical and Communications Conduit
 - 1399 Road Lighting – Base Plate Mounted Pole Wiring Details
 - 1636 Road Lighting – Road Lighting Symbols
 - 1671 Traffic Signals/Road Lighting – Road Lighting Labels Installation
 - 1683 Pathway Lighting – Anchor Cage Fabrication Details
 - 1699 Traffic Signals/Road Lighting/ITS – Parts List
- Departmental Specifications:
- MRTS91 Ducts and Pits
 - MRTS92 Traffic Signal and Road Lighting Footings
 - MRTS94 Road Lighting
 - MRTS97 Mounting Structures for Roadside Equipment



DETAILS OF MINOR POLE



DETAILS OF HINGE POLE

TYPICAL CROSS SECTIONS FOR PATHWAY LIGHTING

Department of Transport and Main Roads		 <small>© The State of Queensland (Department of Transport and Main Roads) 2018 http://creativecommons.org/licenses/by/3.0/au</small>
PATHWAY LIGHTING		
TYPICAL LIGHTING REQUIREMENTS FOR OFF-ROAD PATHWAYS	A3	Standard Drawing No
	Not to Scale	1682
		Date 7/18
A	B	