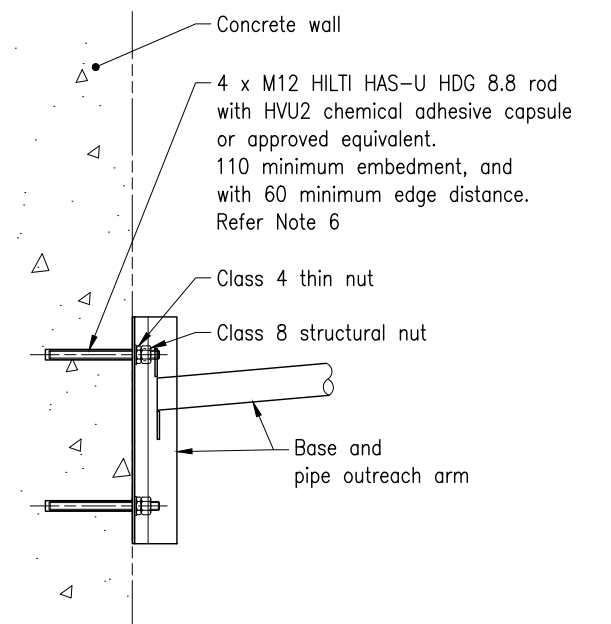
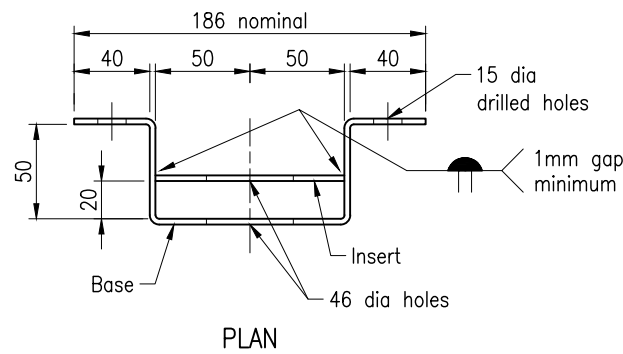


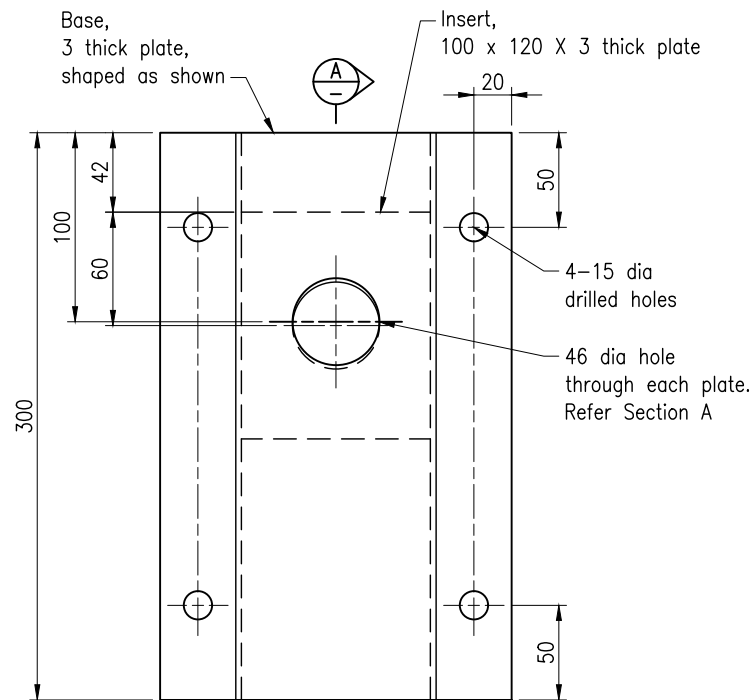
ELEVATION – SETOUT FOR WALL MOUNTED LUMINAIRE
GENERAL ARRANGEMENT



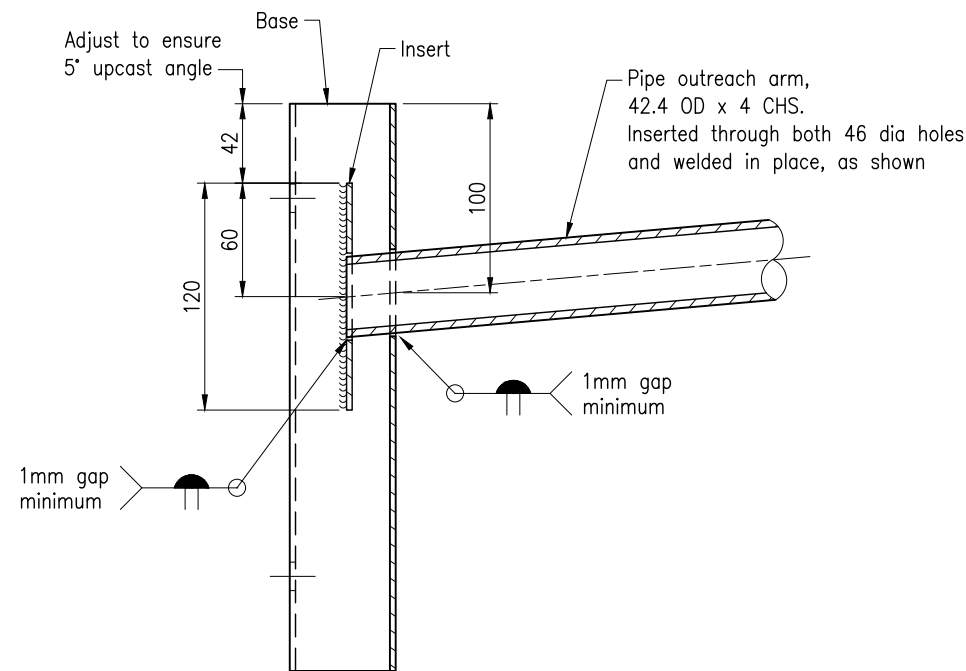
DETAIL 1 CONNECTION DETAILS AT CONCRETE WALL



PLAN



ELEVATION
BASE



SECTION A

The purpose of this drawing is to provide typical standard details. The fitness for purpose of this drawing for a specific project shall be determined and certified by an RPEQ Engineer. Additional project specific details may be required to be included in the scheme drawings.

NOTES:

- SCOPE: This Standard Drawing provides typical assembly and fabrication details of the base and pipe outreach arm for attaching wall mounted lighting, in accordance with MRTS94.
- Maximum Mass of luminaire and plate/hanger = 20kg
Maximum projected surface area of luminaire = 0.27m².
- CLEARANCE: Road clearance shall be measured from the bottom most point of the luminaire. Minimum clearance to suit project specific requirements.
- STEELWORK shall be fabricated to the requirements of MRTS78.
Steel plate Grade HA290 minimum to AS/NZS 1594.
CHS tube Grade C250L0 to AS/NZS 1163.
STRUCTURAL FASTENERS shall be supplied to the requirements of MRTS78.
Threaded rods Class 8.8, nuts Class 8 and washers for Class 8.8 threaded rods to AS/NZS 1252.
Thin nuts Class 4 to AS 1112.4.
All threaded rods and nuts shall be hot dip galvanised to AS 1214.
All other steelwork shall be hot dip galvanised to AS/NZS 4680.
Sharp edges, burrs, slag and weld splatter shall be removed prior to galvanising.
- WELDING symbols conform to AS 1101.3.
All welding shall be SP category to AS 1554.1.
Welding consumables shall be controlled hydrogen type:
G493 to AS/NZS ISO 14341-B or T493 to AS/NZS ISO 17632-B.
- CHEMICAL ANCHORS for fixing to concrete shall be TMR approved and shall be installed to manufacturer's recommendations.
Use a "cover meter" to locate existing reinforcing steel prior to drilling into the concrete wall to avoid damaging existing reinforcing steel. Coring to make holes is not permitted. Repair abandoned holes with an approved epoxy.
- DIMENSIONS are in millimetres.

REFERENCED DEPARTMENTAL SPECIFICATIONS:
MRTS78 Fabrication of Structural Steelwork
MRTS94 Road Lighting

Department of Transport and Main Roads				© The State of Queensland (Department of Transport and Main Roads) 2024 https://creativecommons.org/licenses/by/4.0/	
ROAD LIGHTING				A3	Standard Drawing No 1331
WALL MOUNTED LIGHTING		Not to Scale	Date 3/2024		F