



# Direct Sunshine Coast Rail Line

## Maroochydore station

The Maroochydore precinct is a regionally significant centre with a diverse mix of commercial, community, and residential uses. The area surrounding the proposed Maroochydore station will be within the future Maroochydore City Centre Priority Development Area.

Maroochydore station is proposed to be elevated behind Carnaby Street. The elevated station will provide better connectivity and accessibility within the future Maroochydore City Centre master plan and allow for a multi-modal transport interchange below.

The following features are proposed for Maroochydore station:

- Accessible station with two tracks and an island platform (platform positioned between the two tracks). These platforms will be future-proofed to accommodate 9-car trains.
- As this station is an elevated station, the vertical transport between the ground and platform levels has been designed to include escalators, stairs and lifts.
- This station will be a terminus with facilities for train turnback.
- Future connections to the Sunshine Coast Airport have been enabled within this design.
- The station is generally within the gazetted corridor and is proposed to be integrated with the Maroochydore City Centre development.
- Connectivity to a multi-modal transport network, including the future proposed Sunshine Coast Public Transport project is proposed to be provided near the station.
- The rail line south of the station would be elevated over the Sunshine Motorway and Dalton Drive.
- Station facilities including ticket office, public toilets, end-of-trip facilities (cycle and scooter storage), CCTV and lighting.

TMR undertook consultation on the Direct Sunshine Coast Rail Line stations in mid-2023. The community was encouraged to provide feedback on the alignment, stations and active transport.

### What you told us about Maroochydore station

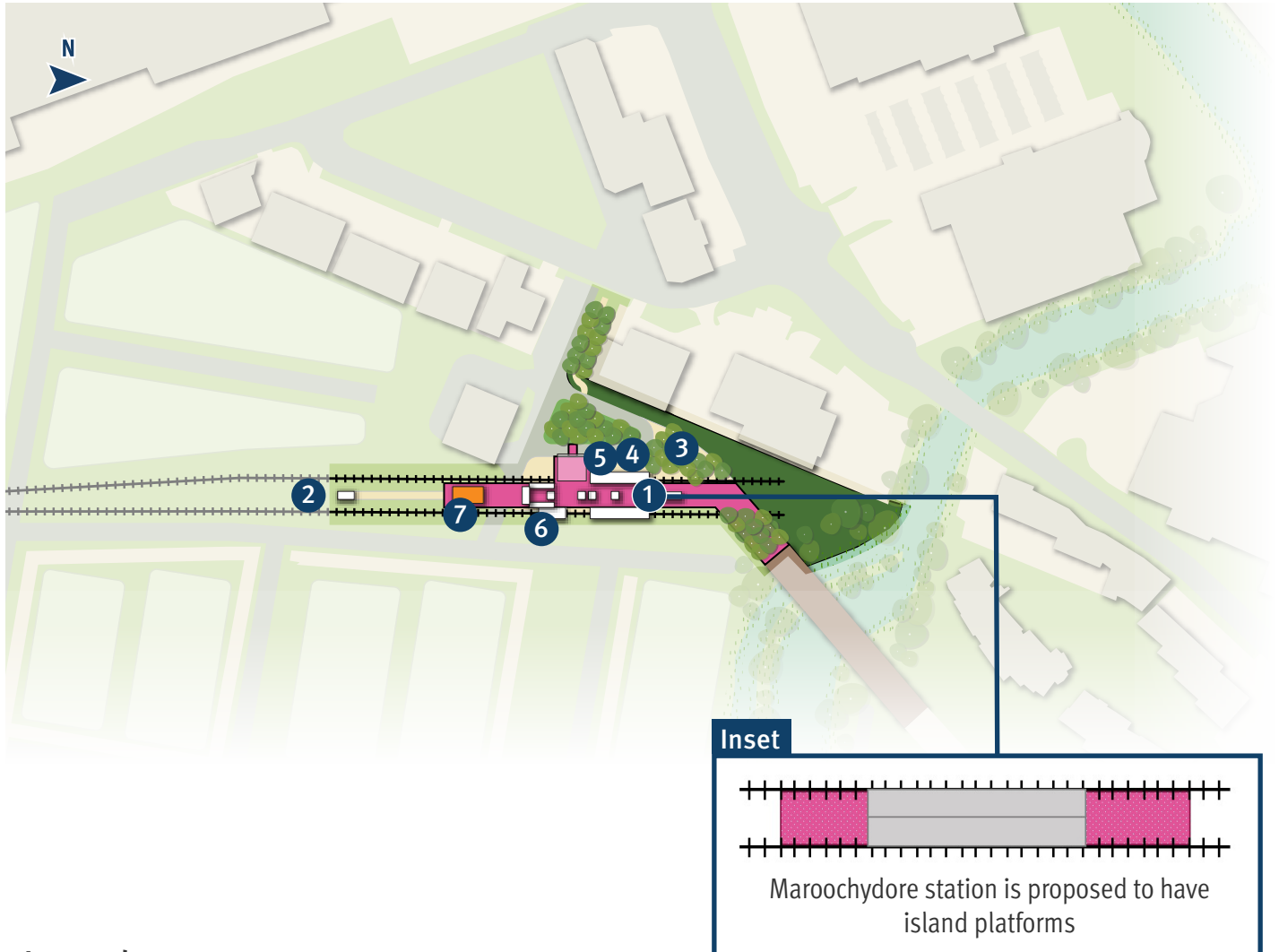
- Park ‘n’ ride is desirable
- Accessible design for disability access
- Connection to buses and the proposed Sunshine Coast Public Transport project is important
- Importance of storage for bicycles and scooters
- Good active transport connections essential, including pedestrian connection to Sunshine Plaza.

### How this is considered in the business case design


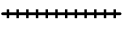





- Maroochydore station is proposed to be a premium station. It will be designed for people to walk and ride to or connect via another public transport mode, with limited parking available for people with a disability and Queensland Rail staff. Park ‘n’ ride facilities will be located at other stations for people driving to a rail station.
- Connecting bus services are a key consideration of planning for the rail project, with modelling and service planning underway. The Direct Sunshine Coast Rail Line will also connect with the proposed Sunshine Coast Public Transport project, with interchange stations still to be determined.
- All new and upgraded stations will be accessible for all customers.

- There will also be additional facilities (such as toilets) for station staff and the public as this is a terminus station.
- All stations will have cycle and scooter storage.
- Active transport connections are being planned along the full 37km corridor to ensure people can walk and ride to stations and to other destinations. Maroochydore station will be connected to pathways within the Maroochydore CBD to make it easy to connect to Sunshine Plaza.
- The business case design for stations includes concept designs for platform configuration and the station building. Detailed design, including more specific details about station facilities, will be undertaken in future phases of the project. Community feedback received during the business case phase will be considered in detailed design.

## Maroochydore station map (updated concept layout)



### Legend

-  ① Station layout (elevated station, island platforms) – see inset
-  ② Dual track
-  ③ Landscaping
-  ④ Kiss 'n' ride
-  ⑤ Disability parking bays and station staff parking
-  ⑥ Cycle storage
-  ⑦ Queensland Rail staff amenities and facilities

All elevated (2 storey) stations to include lifts and stairs.

Station will enable connection with the proposed Sunshine Coast Public Transport project (mode/vehicle type to be determined).

# Maroochydore station access and features

## Getting to and from stations

In addition to connections with the Sunshine Coast Public Transport project, the Direct Sunshine Coast Rail Line project includes upgrades to the bus network to ensure communities along the route have efficient connections to stations.

In line with the Southern Sunshine Coast Public Transport Strategy, we're planning to introduce new routes between stations, key destinations, and surrounding areas. This will improve travel right across the region.



Scan the QR code to view all DSC Rail Line station concept layouts and a map of proposed corridor refinements.



### Accessibility

All stations will be accessible to everyone in our community.



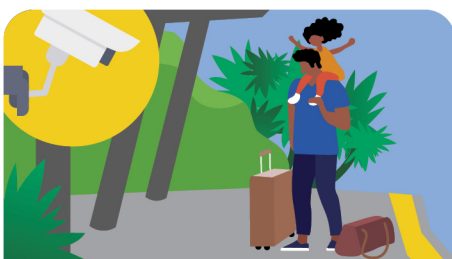
### Active transport

To support active transport options, stations will feature facilities and infrastructure to accommodate bikes and other micro-mobility devices.



### Passenger comfort

Seating, shelters and nearby water refill points will ensure comfortable journey experiences, with toilets provided at major interchange stations.



### Safety

In accordance with Crime Prevention Through Environmental Design (CPTED) principles, stations will include CCTV cameras, lighting and help points.



### Ticketing and information

Customer information will be provided via display screens, timetables and hearing loops, with ticketing facilities also included.

### Contact us

- 1800 407 533 (8.30am to 4.30pm)
- scpublictransport@tmr.qld.gov.au
- Sunshine Coast Public Transport Department of Transport and Main Roads PO Box 1600 Maroochydore QLD 4558