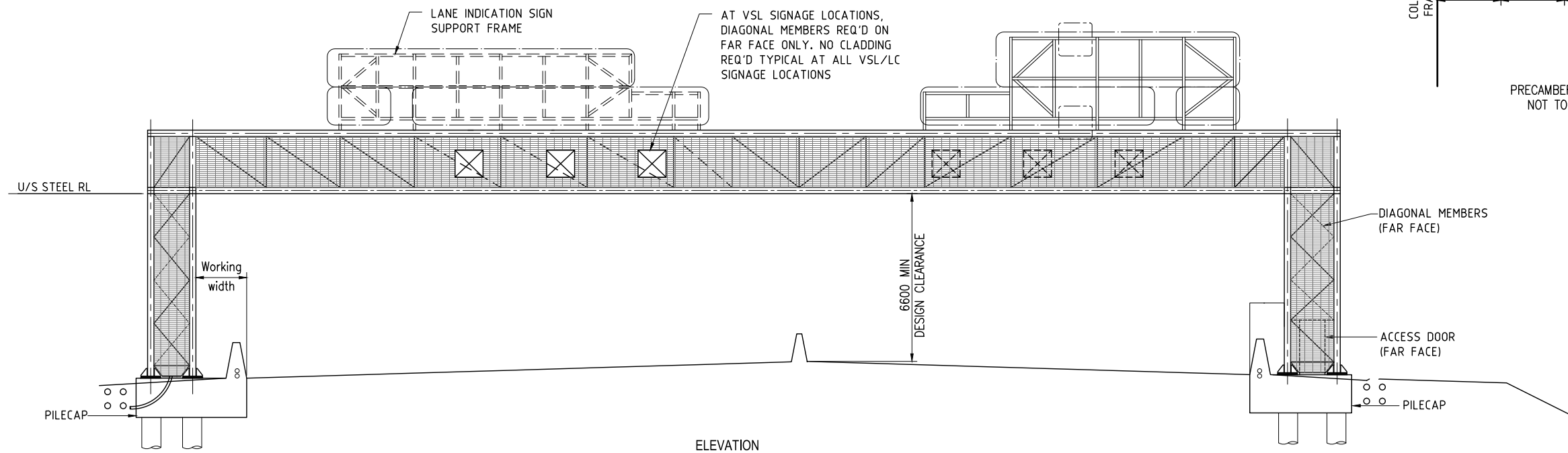
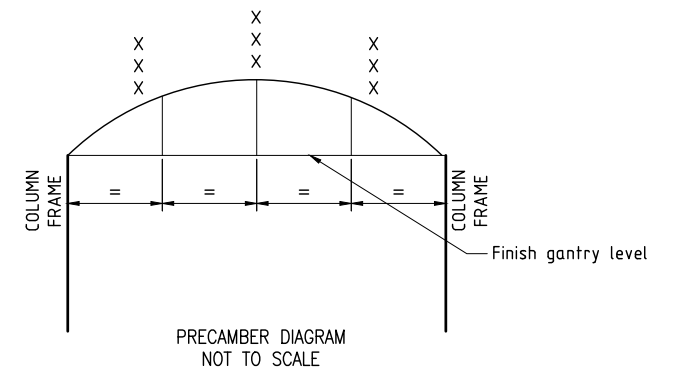


NOTES:

1. Ladder to be used only by trained personnel having approved fall arrest system.
2. Minimum fall arrest system requirement is double lanyard and full body harness.
3. Sign to be fixed to ladder indicating this requirement.
4. Design life, design loadings, durability requirements, serviceability requirements, load combinations, maintenance platform requirements, fall arrester system, Gantry protection barrier types etc. shall be in accordance with TMR "Design Criteria for Bridges and Other Structures".
5. Standard notes shall be in accordance with the relevant Notes from TMR "Structural Drafting Standards".
6. Maximum permitted tolerance for sign offset from centre of lane according to "Design Guide for Roadside Signs".

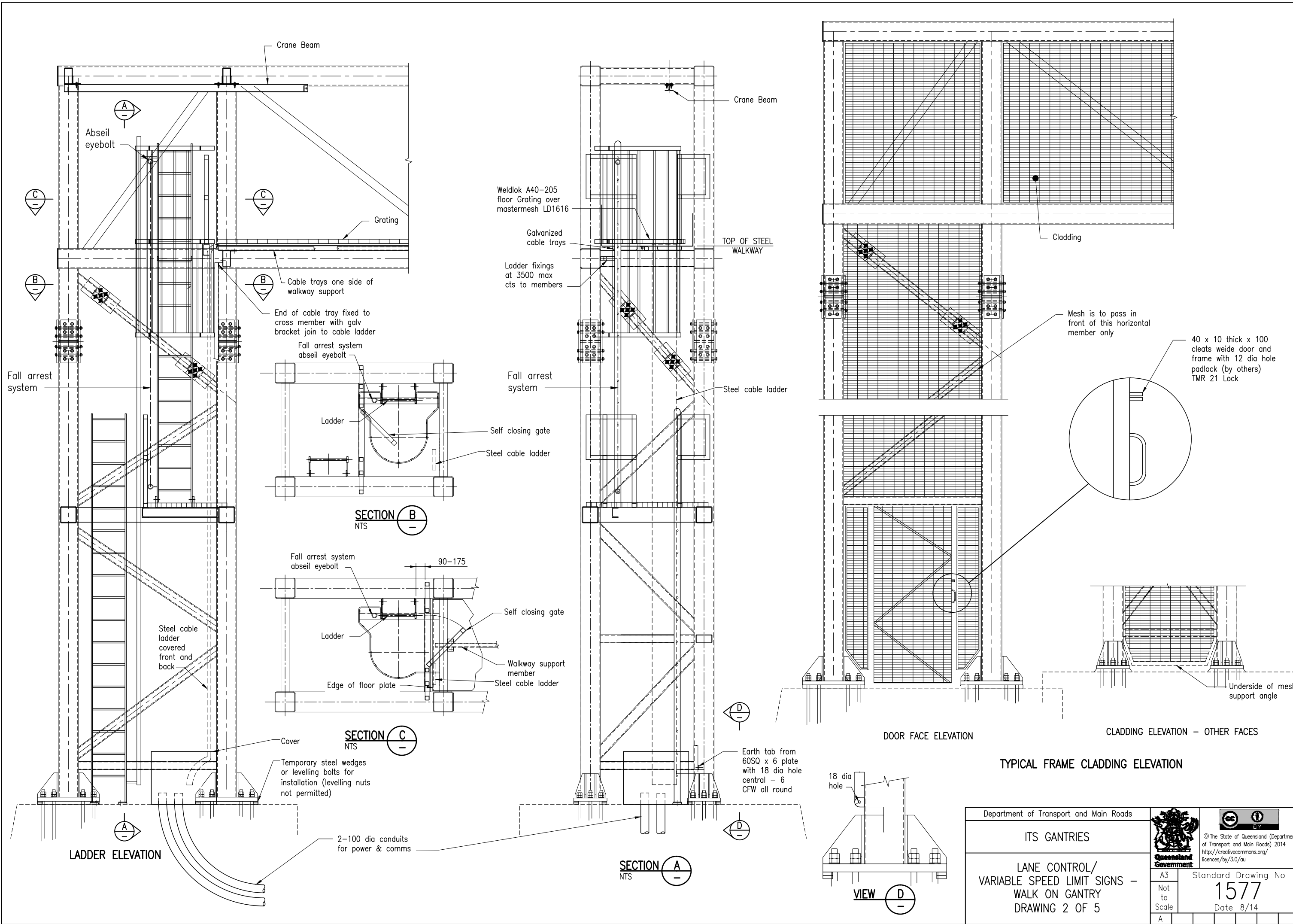
PLAN



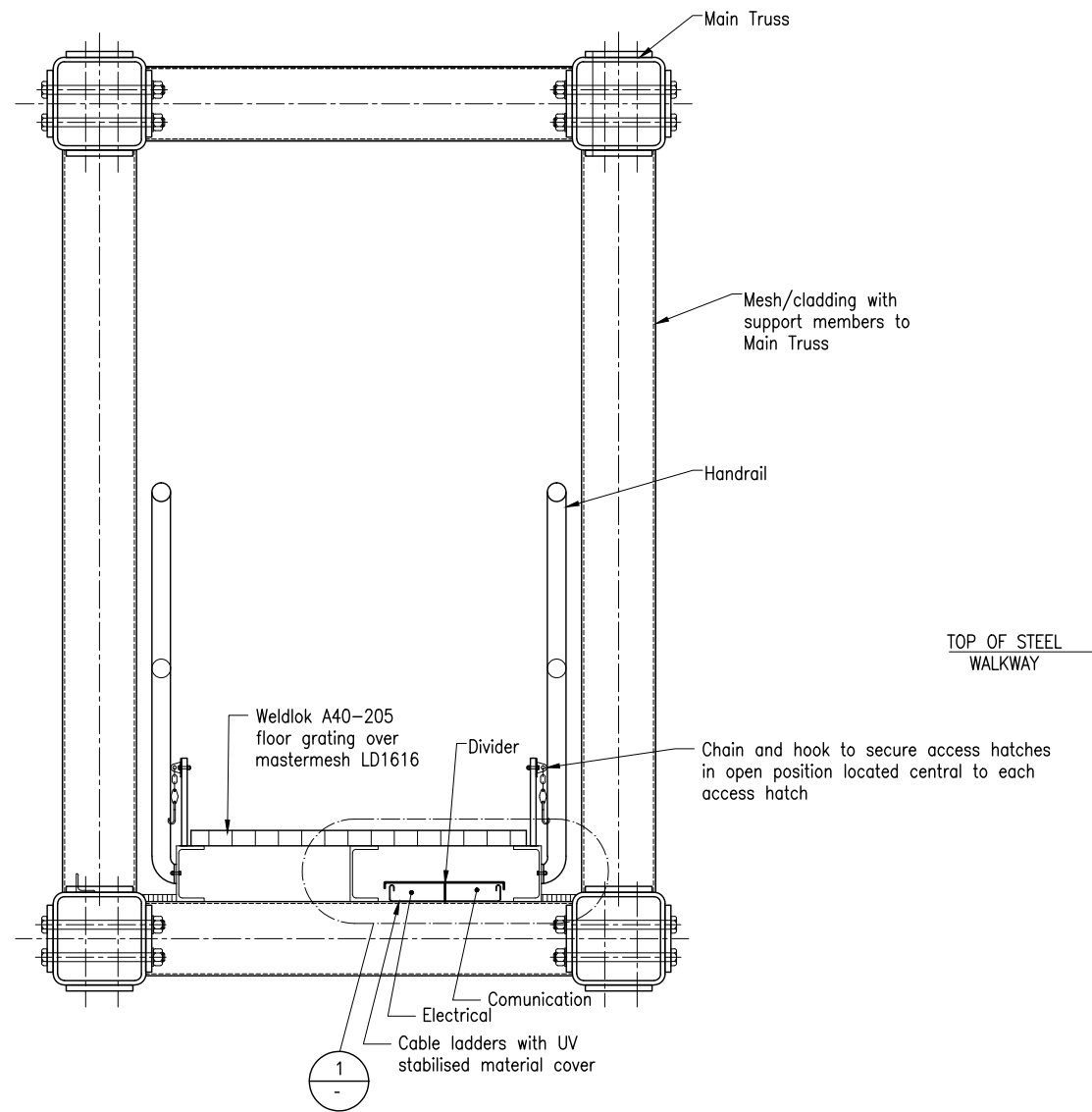
ELEVATION

GENERAL LAYOUT

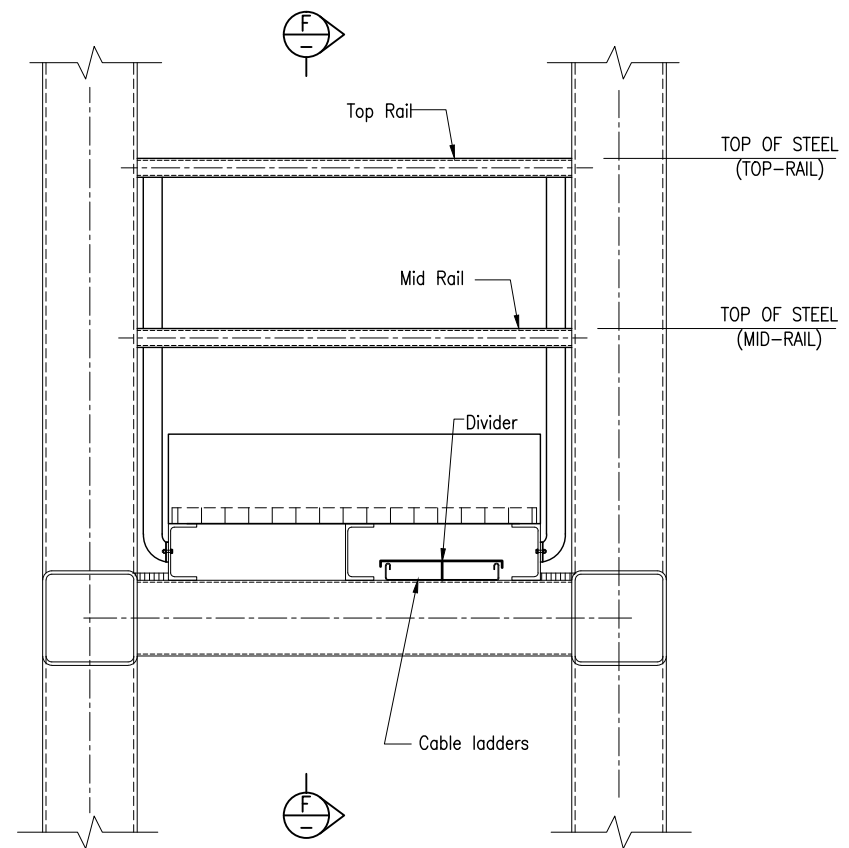
Department of Transport and Main Roads		 <small>© The State of Queensland (Department of Transport and Main Roads) 2014 http://creativecommons.org/licenses/by/3.0/au</small>	
ITS GANTRIES			
LANE CONTROL/ VARIABLE SPEED LIMIT SIGNS - WALK ON GANTRY DRAWING 1 OF 5		A3 Not to Scale A	Standard Drawing No 1577 Date 8/14



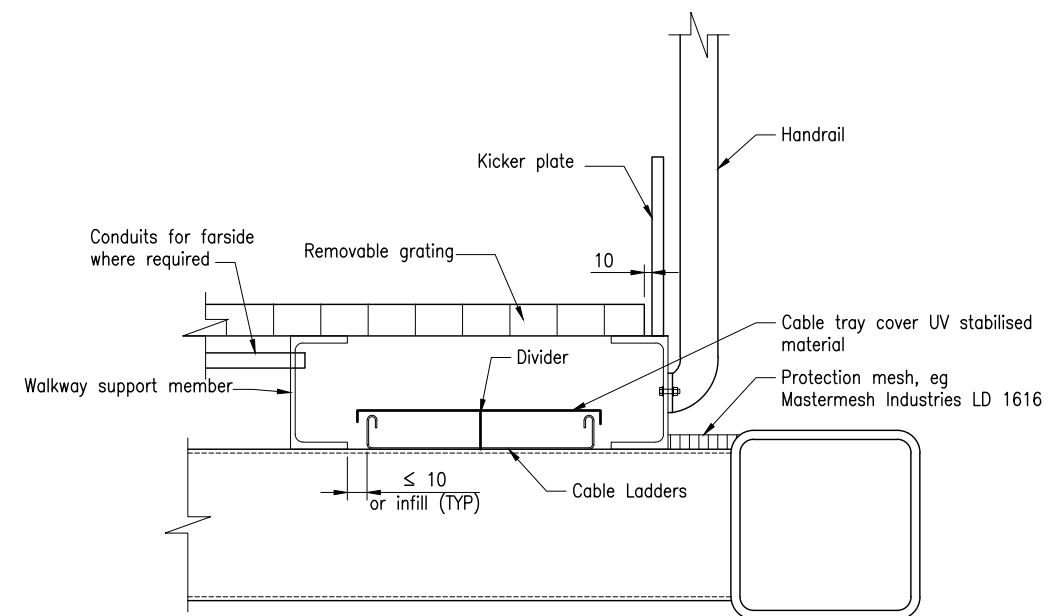
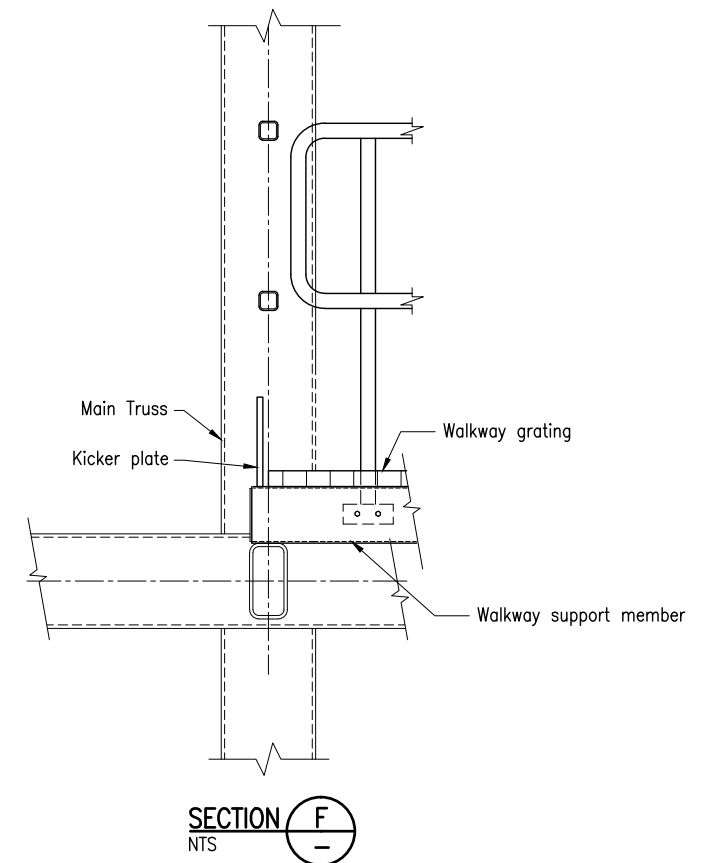
Department of Transport and Main Roads		 <small>© The State of Queensland (Department of Transport and Main Roads) 2014 http://creativecommons.org/licenses/by/3.0/au</small>	
ITS GANTRIES			
LANE CONTROL/ VARIABLE SPEED LIMIT SIGNS - WALK ON GANTRY DRAWING 2 OF 5		<small>A3</small> <small>Not to Scale</small> <small>A</small>	<small>Standard Drawing No</small> 1577 <small>Date 8/14</small>



ELEVATION
TYPICAL WALKWAY DETAILS



END OF WALKWAY DETAIL AT NON ACCESS TOWER

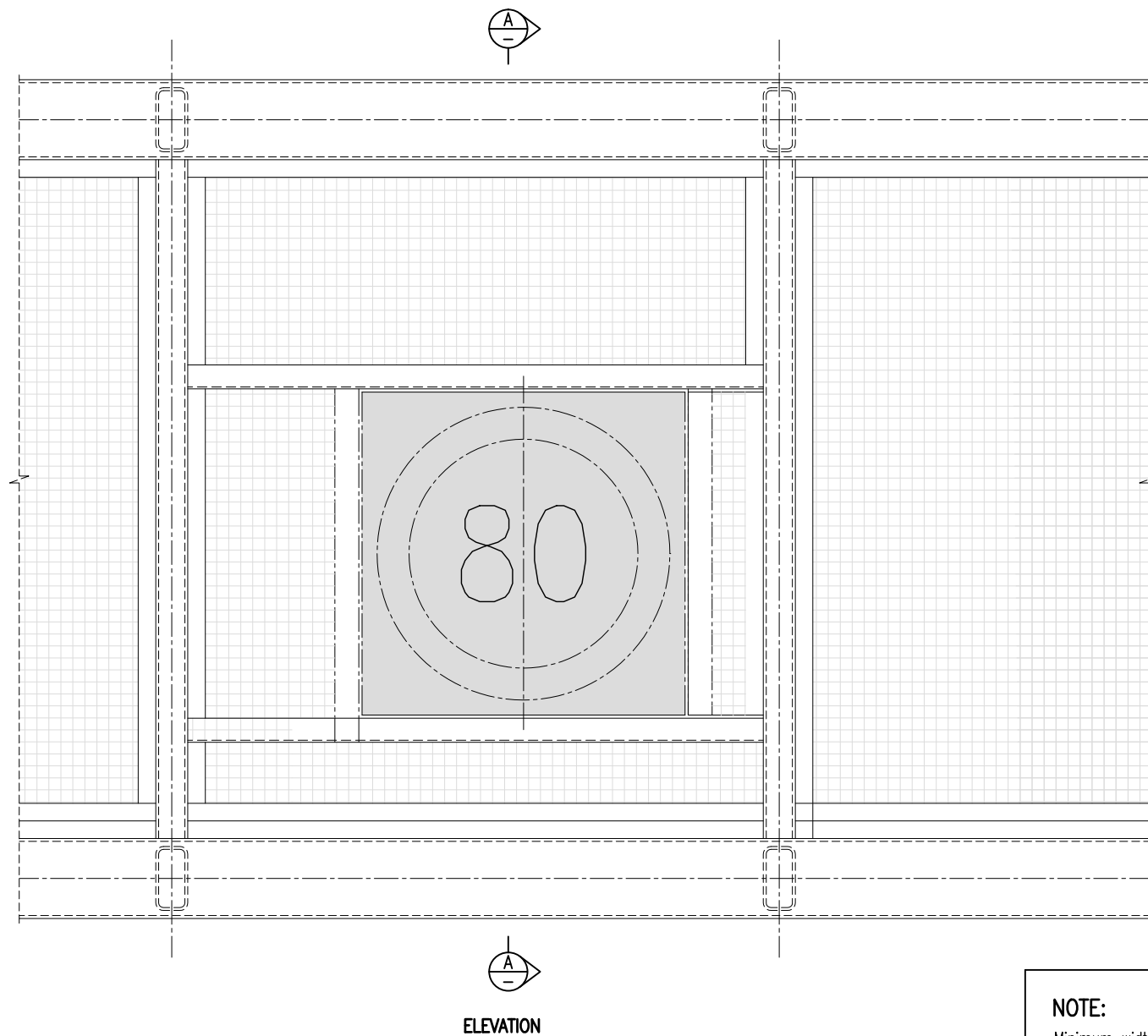


DETAIL 1
NTS

NOTES:

1. No screws for securing grating. Use proprietary removable fastening.
2. Grating panels shall be sized to enable a "one person lift" with proprietary lifter.

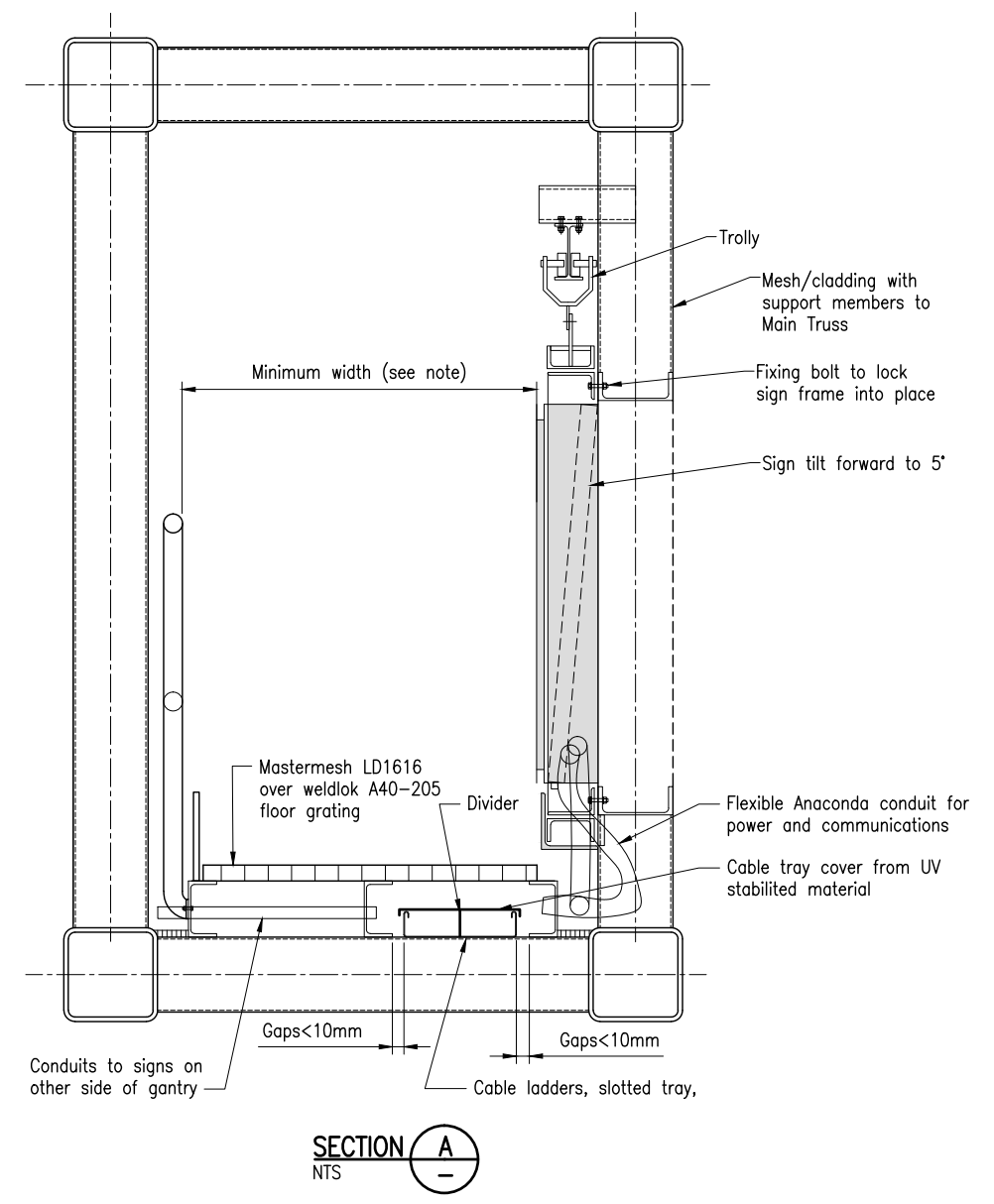
Department of Transport and Main Roads			
ITS GANTRIES			
LANE CONTROL/ VARIABLE SPEED LIMIT SIGNS - WALK ON GANTRY DRAWING 3 OF 5		A3 Not to Scale A	Standard Drawing No 1577 Date 8/14



ELEVATION

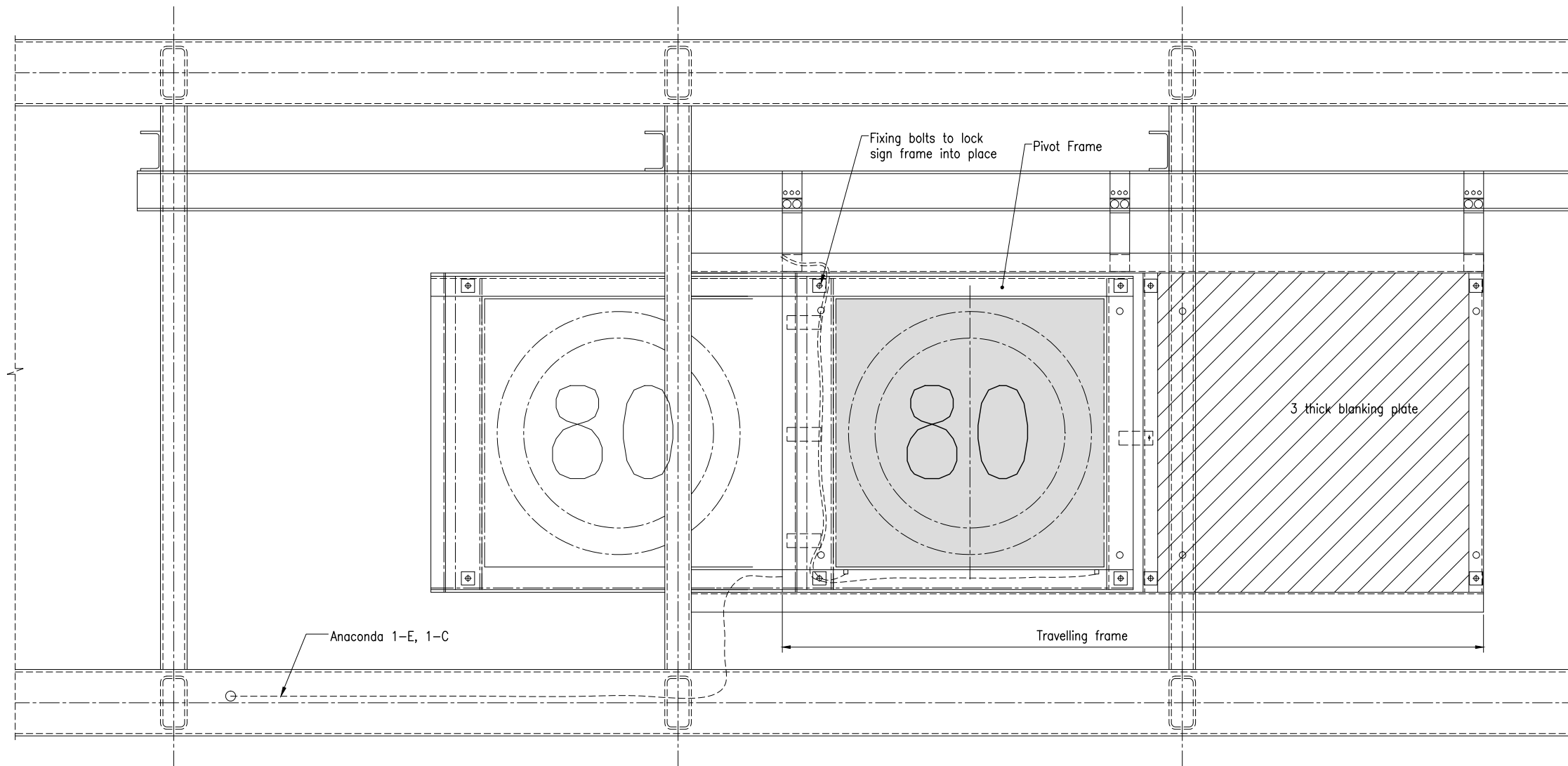
NOTE:
 Minimum width to be the greater of 800mm or the functional requirements for maintenance of the equipment/device installed eg. The required working width for message sign, allowance for sliding and swinging out of Lane control/VSL sign etc.

VSL SIGN ATTACHMENT EXTERNAL VIEW

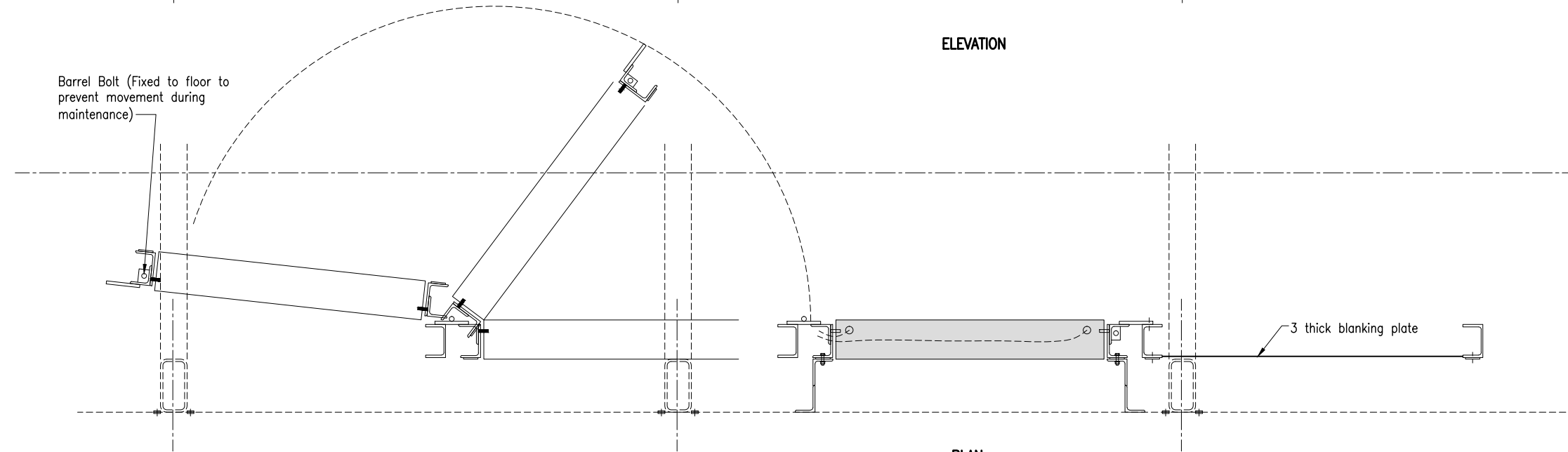


SECTION A
 NTS

Department of Transport and Main Roads				© The State of Queensland (Department of Transport and Main Roads) 2014 http://creativecommons.org/licenses/by/3.0/au
ITS GANTRIES				
LANE CONTROL/ VARIABLE SPEED LIMIT SIGNS - WALK ON GANTRY DRAWING 4 OF 5		A3 Not to Scale A	Standard Drawing No 1577 Date 8/14	



ELEVATION





PLAN

SLIDE AND SWING SIGN FOR MAINTENANCE

VSL SIGN ATTACHMENT INTERNAL VIEW

VSL Sign Attachment Operational Requirements

1. In-Service position: Pivot frame to be fastened to external frame head and sill with M16 bolt in each corner of pivot frame.
2. Sign blanking position: Prior to moving the pivot frame, the VSL unit must be returned to a vertical rotation via the adjustment slots in the side of the pivot frame. Remove M16 bolts from pivot frame. Slide travelling frame across until blanking plate frame fastener holes align with holes in head and sill. Install M16 bolt in each corner of the blanking plate frame.
3. Sign face access position: with sign secured in blanking position, unfasten the M8 bolt in the pivot frame lock plate and swing sign inwards. Secure in position with barrel bolt on end of frame.

Department of Transport and Main Roads		 <small>© The State of Queensland (Department of Transport and Main Roads) 2014 http://creativecommons.org/licenses/by/3.0/au</small>	
ITS GANTRIES			
LANE CONTROL/ VARIABLE SPEED LIMIT SIGNS - WALK ON GANTRY DRAWING 5 OF 5		A3 Not to Scale A	Standard Drawing No 1577 Date 8/14