



ecosure
improving ecosystems



**OFFSET PEST ANIMAL MONITORING
BASELINE REPORT**

July 2021

GYMPIE REGIONAL COUNCIL

Executive summary

Ecosure undertook baseline pest monitoring across 13 offset properties designated to offset the impact of the Bruce Highway Project: Cooroy to Curra Section D (Woondum to Curra) in Gympie. The offset properties are located in three main clusters: Curra, Victory Heights, and Woondum. The monitoring period aimed to estimate baseline levels of pest activity in each offset cluster for comparison in later years following active pest management. Passive infrared cameras (Reconyx Professional HP2X Hyperfire 2) were deployed in mid-February for a total of nine weeks. Cameras were planned to be collected after eight weeks, but inclement weather prevented collection, so an additional week's data was collected.

Generalised linear mixed models were used to estimate activity indices for pest species in each offset cluster. The activity indices represent the expected number of detections (red fox/wild dog/feral cat/feral pig) per camera station per day at each offset cluster, and it is assumed that these indices are proportional to absolute pest abundance.

Red foxes were recorded in all three clusters with greatest activity in Victory Heights, followed by Woondum and Curra. Wild dog activity was highest in Curra followed by Woondum, and none were recorded in Victoria Heights. An activity index for feral cats could only be calculated for Curra, although two detections were made in Victory Heights and one domestic cat was observed in Woondum. Similarly, an activity index for feral pigs could not be accurately calculated for Curra due to the variable nature of data, though groups of 1 – 15 individuals were captured on cameras in Curra; no pigs were detected in Victory Heights or Woondum.

The cameras targeted pest species but also recorded koala and black-breasted button-quail which are species the areas are designed to provide offset habitat for. One koala was detected on a camera in Curra and three black-breasted button-quails were detected on two cameras in Woondum. This highlights the importance of effective pest management to limit predation pressure on these and other endemic species.

Acknowledgements

Ecosure gratefully acknowledges Dr. Andrew Bengsen, Research Scientist for the Department of Primary Industry Vertebrate Pest Research Unit, for expert advice provided throughout this project. In particular, we would like to thank him for his assistance with statistical analyses.

Acronyms and abbreviations

| | |
|------------------|--|
| AIC _c | Akaike information criterion analyses adjusted for small samples sizes |
| BBBQ | Black-breasted button-quail |
| Council | Gympie Regional Council |
| DAWE | Department of Agriculture, Water, and the Environment |
| DEE | Department of the Environment and Energy |
| DES | Department of Environment and Science |
| DPI | Department of Primary Industries |
| EPBC Act | <i>Environment Protection and Biodiversity Conservation Act 1999</i> |
| GIS | Geographical Information Systems |
| GLMM | Generalised Linear Mixed Model |
| HSE | Health Safety and Environment Plan |
| NSW | New South Wales |
| OMP | Cooroy to Curra Section D – Detailed Design Offset Management Plan |
| PAMS | Pest Animal Management Strategy |
| Project | Bruce Highway Project: Cooroy to Curra Section D (Woondum to Curra) |
| QPWS | Queensland Parks and Wildlife Service |
| TMR | Department of Transport and Main Roads |

Contents

| | |
|---|----|
| Executive summary..... | 1 |
| Acknowledgements..... | 2 |
| Acronyms and abbreviations..... | 3 |
| List of figures | 5 |
| List of tables..... | 5 |
| Introduction..... | 6 |
| 1.1 Scope of works | 6 |
| 1.2 Site context..... | 7 |
| 2 Methods..... | 9 |
| 2.1 Camera trapping | 9 |
| 2.2 Limitations..... | 9 |
| 2.3 Data analysis | 10 |
| 2.3.1 Image sorting..... | 10 |
| 2.3.2 Statistical analyses | 10 |
| 2.3.2.1 Track type | 11 |
| 3 Results..... | 15 |
| 3.1 Statistical analysis..... | 15 |
| 3.2 Summary of observations (non-statistical results) | 17 |
| 3.2.1 Curra offset cluster..... | 17 |
| 3.2.2 Victory Heights offset cluster..... | 21 |
| 3.2.3 Woondum offset cluster | 22 |
| 3.3 Spatial analysis..... | 25 |
| 3.3.1 Track type..... | 25 |
| 3.3.2 Spatial mapping..... | 25 |
| 4 Discussion | 29 |
| References | 31 |
| Appendix 1 Suitably qualified personnel..... | 32 |
| Appendix 2 Camera locations | 33 |
| Appendix 3 Statistical analysis coding..... | 36 |
| Appendix 4 Statistical output summary | 40 |

List of figures

| | |
|--|----|
| Figure 1 Gympie offset sites..... | 8 |
| Figure 2 Camera locations in Curra offset sites..... | 12 |
| Figure 3 Camera locations in Victory Heights offset sites..... | 13 |
| Figure 4 Camera locations in Woondum offset sites | 14 |
| Figure 5 Pest activity indices estimated from statistical analyses, excluding species/sites with insufficient data (i.e. feral pigs in Curra and cats in Victory Heights and Woondum)..... | 16 |
| Figure 6 Total number of independent pest observations in each offset cluster..... | 17 |
| Figure 7 Pack of four wild dogs frequently observed on cameras within the Curra offset sites. | 18 |
| Figure 8 Pack of wild dogs stalking and hunting an adult swamp wallaby (sequence from left – right, top – bottom)..... | 19 |
| Figure 9 Koala captured on camera 33 in Curra offset site..... | 20 |
| Figure 10 Wild dog captured on camera 33, 1.5 hours after the koala was captured..... | 20 |
| Figure 11 Feral cats in Victory Heights offset sites captured on a) camera 58 and b) camera 67..... | 21 |
| Figure 12 Red foxes in Victory Heights offset sites captured on camera 58. | 22 |
| Figure 13 Three wild dogs captured on camera 48 in Woondum offset cluster..... | 23 |
| Figure 14 Wild dog carrying medium-sized prey in its mouth on camera 49 in Woondum offset cluster. | 24 |
| Figure 15 Domestic cat captured on camera 45 in Woondum offset cluster. | 24 |
| Figure 16 Black-breasted button-quails observed in Woondum offset sites; a) camera 55 b) camera 50..... | 24 |
| Figure 17 Pest animal activity in Curra offset properties..... | 26 |
| Figure 18 Pest animal activity in Victory Heights offset properties..... | 27 |
| Figure 19 Pest animal activity in Woondum offset properties | 28 |

List of tables

| | |
|--|----|
| Table 1 Offset site details..... | 7 |
| Table 2 Activity indices calculated for each pest species in each offset cluster. | 16 |
| Table 3 Pest animal observations per track type. | 25 |

Introduction

The Department of Transport and Main Roads (TMR) has commenced construction for the Bruce Highway Project: Cooroy to Curra Section D (Woondum to Curra) (Project). As part of the conditions of approval (EPBC 2017/7941) from the Commonwealth Department of the Environment and Energy (DEE) (now the Department of Agriculture, Water, and the Environment [DAWE]) under the *Environment Protection and Biodiversity Conservation Act 1999* (EPBC Act), an Offset Management Plan (OMP) was developed by TMR. This included securing and managing 13 offset properties in the Gympie Region, located in Curra, Victory Heights, and Woondum, for koala (*Phascolarctos cinereus*) and black-breasted button-quail (*Turnix melanogaster*, BBBQ) (Table 1). The OMP outlined several conditions related to the delivery of offsets, including pest management. As per the OMP, the Department of Transport and Main Roads (TMR) will subcontract specialists to implement pest management within the 13 offset properties to support conservation of the koala and BBBQ.

Management in each offset property will target pest species known to threaten each protected species: red fox (*Vulpes vulpes*) and wild dog (*Canis lupus familiaris*) in koala offset properties; and fox, wild dog, feral pig (*Sus scrofa*), and feral cat (*Felis catus*) in BBBQ offset properties. Gympie Regional Council (Council) engaged Ecosure to undertake baseline pest animal monitoring across the 13 environmental offset properties located within the Gympie region, as part of a contract with TMR. Baseline monitoring was in accordance with the Pest Animal Monitoring Program for the offset properties (Ecosure 2020), which was prepared to guide pest animal monitoring over ten years to detect changes and allow an active control program to be evaluated.

This first round of monitoring aimed to establish a baseline activity index for each relevant pest species in each offset cluster. Although site works had commenced in some areas prior to this survey being undertaken, the survey is considered a baseline for future statistical monitoring. Pest monitoring will occur annually, and baseline data will be used in subsequent years to determine the efficacy of pest management activities.

1.1 Scope of works

The scope of works included:

- monitoring as per the Pest Animal Monitoring Program (Ecosure 2020):
 - eight-week camera monitoring period
 - 68 cameras deployed across three offset clusters in Gympie (Curra, Victory Heights, Woondum)
 - regular battery and SD card checks.
- analysing camera trap images and conducting statistical analyses on results
- preparing this baseline monitoring report summarising field and statistical methods, results, and supporting maps.

1.2 Site context

Of the three offset clusters, Curra is the largest (approximately 239 ha) and with Woondum (56 ha) and Victory Heights (46 ha) the total offset area is around 341 ha (Table 1, Figure 1).

Table 1 Offset site details

| Cluster location/name | Lot/Plan | Offset focal species | Area (ha) | Total area (ha) |
|-----------------------|-------------|----------------------|-----------|-----------------|
| Curra | 1MPH23906 | koala | 27.69 | 239.44 |
| | 3MPH23906 | koala | 22.97 | |
| | 4MPH23906 | koala | 3.46 | |
| | 878MCH1061 | koala | 144.56 | |
| | 889CP864404 | koala | 40.77 | |
| Victory Heights | 19SP299683 | koala | 26.86 | 45.58 |
| | 1MPH23904 | koala | 5.85 | |
| | 1MPH5670 | koala | 2.02 | |
| | 2MPH14193 | koala | 7.27 | |
| | 763MCH5342 | koala | 3.58 | |
| Woondum | 102SP297908 | koala + BBBQ | 12.66 | 56.09 |
| | 2SP302526 | koala + BBBQ | 15.18 | |
| | 3SP302524 | koala + BBBQ | 28.25 | |
| Total | | | | 341.11 |

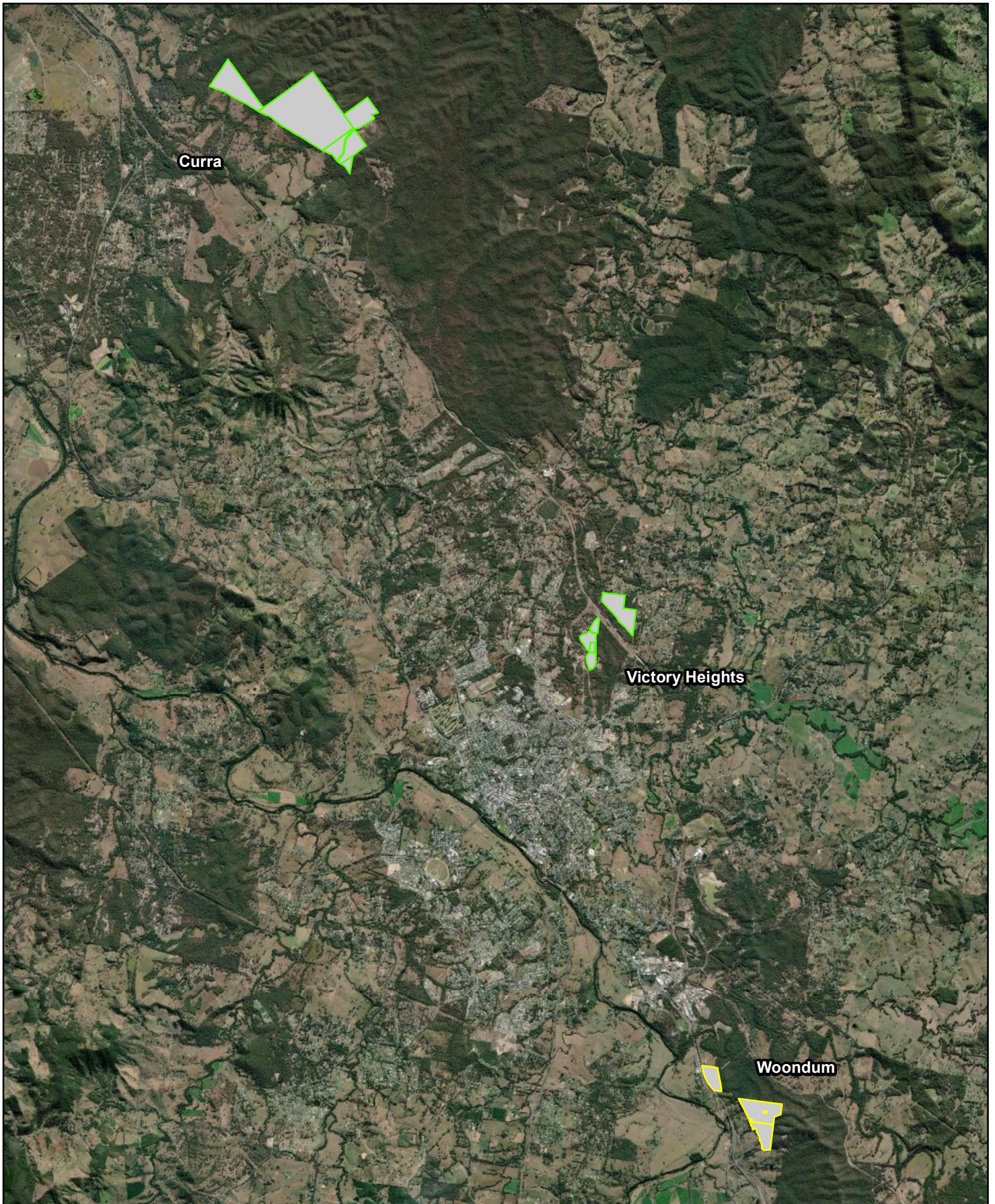


Figure 1: Offset sites

Gympie Regional Council
 Offset Pest Animal Monitoring - Baseline Report

- koala offset
- koala + black-breasted button-quail offset



2 Methods

The following field work, analysis and reporting was undertaken by suitably qualified personnel to meet the Federal Requirements of the OMP. See Appendix 1 for further details on personnel and their roles throughout this project.

2.1 Camera trapping

Sixty-eight passive infrared cameras (Reconyx Professional HP2X Hyperfire 2, Reconyx Inc. Holmen, WI, USA) were installed between 11th – 13th February 2021. Cameras were deployed for nine weeks in total (i.e. one week more than planned, due to heavy rainfall conditions limiting safe accessibility at the end of the eight-week period). The implications of this change for subsequent years are discussed in Section 3.3.

Cameras were placed approximately 250 m apart along roads, tracks, and movement corridors where possible (Figure 2, Figure 3, Figure 4, Appendix 2). Where not possible, cameras were placed in the most suitable location and 'site type' (e.g. track, bush, open area) was recorded for statistical analyses. Cameras were attached to stable, permanent tree trunks approximately 30 cm from the road/track edge (where applicable), 50 cm above the ground, approximately 45° to the road/track, and north/south-facing to avoid direct sunlight. Vegetation in front of the cameras was trimmed to reduce the number of false triggers and maximise pest animal detectability. Cameras were set to capture images with the following settings: rapidfire, no delay, 10 images per trigger, 3.1-megapixel resolution, high-medium sensitivity, night mode: fast shutter or high quality.

To maximise the detection of feral cats in Woondum offset sites, seven camera traps were baited with lures. The lures consisted of olfactory (mixture of tinned tuna, pure tuna oil, and sardines) and audio lures (Cat Caller, Professional Trapping Supplies, Molendinar, Queensland, Australia). Due to a short supply of audio lure devices available in Australia, only three of the seven cameras baited with olfactory lures also had an audio lure (Figure 4).

2.2 Limitations

The limitations pertinent to the survey design are outlined in the Pest Animal Monitoring Program (see Ecosure 2020). The following limitations relate specifically to the implementation of baseline monitoring.

Deployment was originally scheduled for November 2020 but unavoidable delays resulted in a February 2021 commencement. Ideally, surveys would have been in late-spring/early-summer to coincide with peak activity of foxes and wild dogs. However, red foxes and wild dogs continue to disperse until late May (Ecosure 2020), so this monitoring period was ultimately deemed acceptable for baseline monitoring. While this has the potential to reduce species detectability compared to the more optimal period; if surveys are conducted at the same time each year, then valid comparisons in species abundance/activity trends can be made.

The delayed deployment of cameras also raised concerns regarding the potential impact of Project clearing on pest activity. Ideally, baseline monitoring would have been completed prior to any clearing/construction works to avoid any visual or noise impacts to pest animal behaviour (e.g. avoiding certain areas). However, C1 (south) works commenced in October 2020, prior to camera deployment. While on site, the noise disturbance from construction work appeared minimal, suggesting little impact. Ultimately, the location and scale of Project clearing was considered unlikely to significantly impact pest animal activity in the offset properties.

2.3 Data analysis

2.3.1 Image sorting

Camera trap images were analysed over the two-weeks following camera collection. A five-minute window was used to discriminate between independent pest observations i.e. an observation was considered independent if it was separate from the preceding image/s by more than five minutes. All observations were entered into a database with the corresponding camera number, offset cluster, track type, and bait status used for statistical analyses.

2.3.2 Statistical analyses

Due to the challenges of deriving an absolute population abundance of pest species within offset clusters, an activity index was used to represent relative pest abundance in each offset cluster (as per Bengsen et al. 2014 and Thompson et al. 2019). The activity index describes the expected number of detections (red fox/wild dog/feral cat/feral pig) per camera station per day at each offset cluster.

Activity indices were calculated using generalised linear mixed models (GLMMs) fit by maximum likelihood (Laplace Approximation) with Poisson error distributions. Multiple models were run for each species to determine the model that was best supported by the data. In all models, the response variable was 'count', i.e. the number of red fox/wild dog/feral cat/feral pig observations recorded at each camera station on each day (including counts of '0'), and the fixed variable was 'site'. Different random effects, and combinations thereof, were attempted in each model. Attempted models included:

- basic GLMM model with no random effects
- simple GLMM model with 'camera' as a random effect
- simple GLMM model with 'camera' and 'date' as random effects
- GLMM model with 'camera' nested in 'track type' as a random effect
- GLMM model with 'camera' nested in 'bait' as a random effect
- splitting data into three 23-day periods, then running basic models with 'period' as a fixed effect.

Akaike information criterion analyses (adjusted for small samples sizes; AIC_C) were used to

determine which model best fit the data for each pest species. AIC_C determined the following models for each species:

- wild dog: **GLMM model with 'camera' nested in 'track type' as a random effect**
 - Technically, the best-fit model was a simple GLMM model with 'camera' and 'date' as random effects. However, this result suggests that some days were more likely to have dog detections than others which may cause issues with repeatability in future years. For simplicity, repeatability and consistency with the red fox and feral cat models, the second-best model (bolded and underlined above) was adopted.
- red fox: **GLMM model with 'camera' nested in 'track type' as a random effect**
- feral cat: **GLMM model with 'camera' nested in 'track type' as a random effect**
- feral pig: see section 3.1.

The R Studio coding scripts for each activity index calculation are provided in Appendix 3.

2.3.2.1 Track type

The AIC_C emphasised the importance of accounting for 'track type' as a random variable in the models, likely due to the impact it has on species detectability, particularly of red foxes and wild dogs (Read et al. 2015, Wysong et al. 2020). Cameras were placed preferentially along movement corridors including tracks and dry creek beds. Where these locations were not available, cameras were strategically placed by field ecologists. Six 'track types' were recorded (in descending order):

- track (26 cameras)
- bush (21 cameras)
- dry creek bed (16 cameras)
- open area (4 cameras)
- small clearing (1 camera).

The influence of 'track type' on the results is discussed in Section 3.3.1.

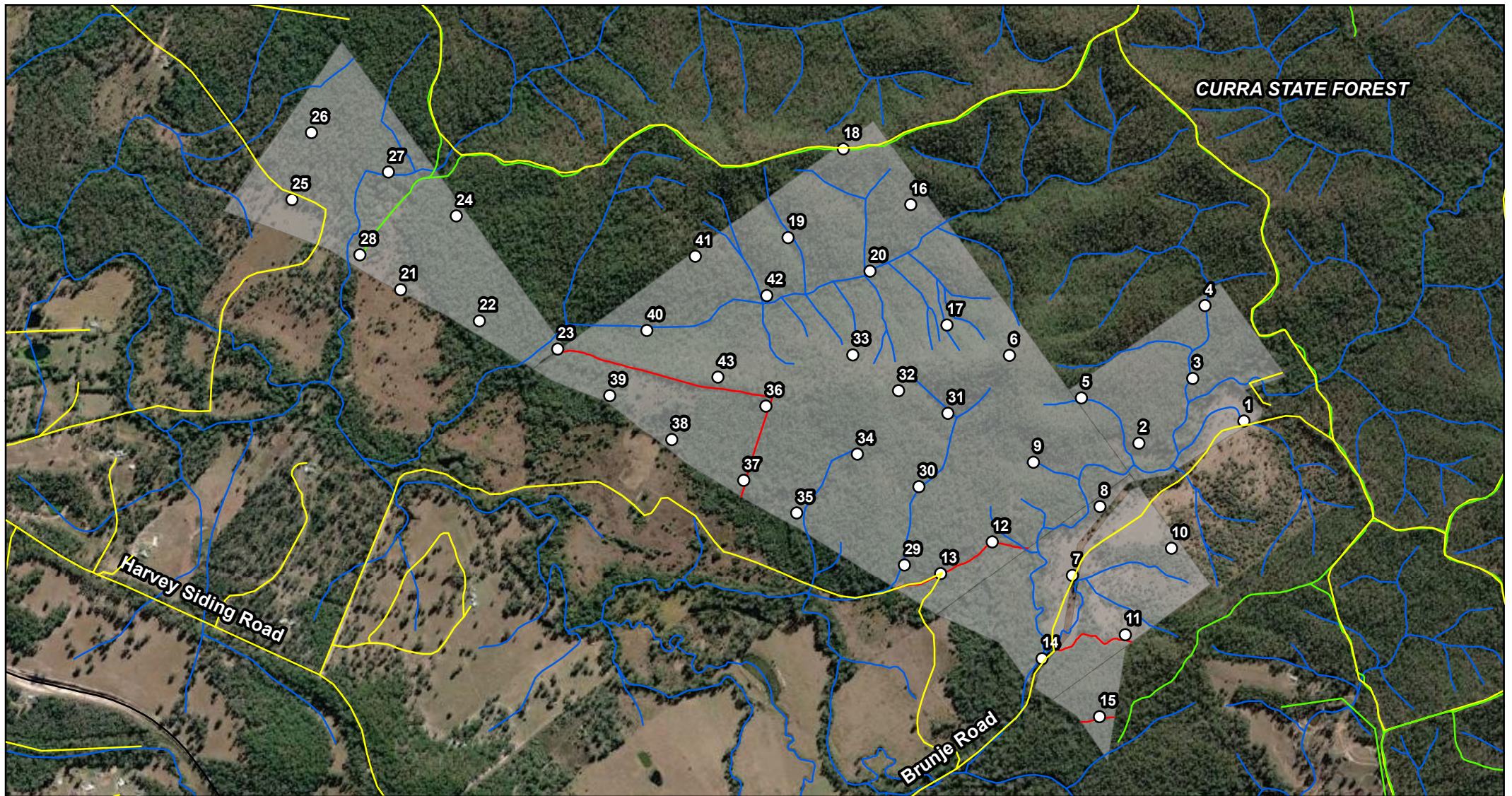


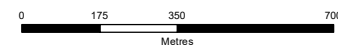
Figure 2: Camera locations in Curra offset sites

Gympie Regional Council
 Offset Pest Animal Monitoring - Baseline Report

- Offset cluster
- Rail network
- QPWS access road
- Road
- Potential tracks
- Camera locations
- Watercourse



Job number: PR5853
 Revision: 0
 Author: EK
 Date: 27/05/2021



GDA 1994 MGA Zone 56
 Projection: Transverse Mercator
 Datum: GDA 1994
 Units: Meter



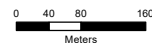
Figure 3: Camera locations in Victory Heights offset sites

Gympie Regional Council
 Offset Pest Animal Monitoring - Baseline Report

- Offset cluster
- Rail network
- QPWS access road
- Road
- Watercourse
- Potential tracks
- Camera locations



Job number: PR5853
 Revision: 0
 Author: EK
 Date: 14/06/2021



GDA 1994 MGA Zone 56
 Projection: Transverse Mercator
 Datum: GDA 1994
 Units: Meter

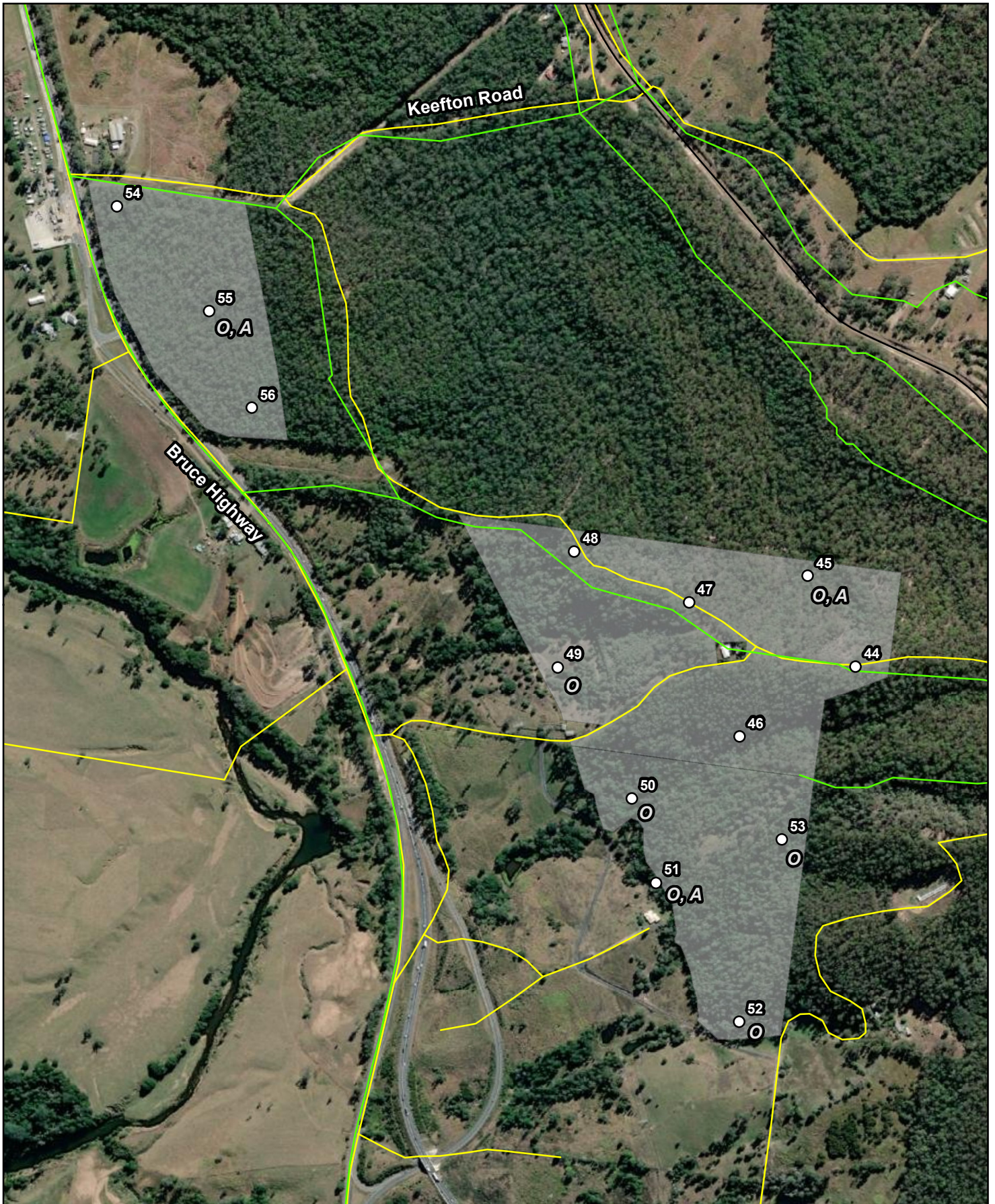


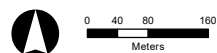
Figure 4: Camera locations in Woondum offset sites

Gympie Regional Council
 Offset Pest Animal Monitoring - Baseline Report

- Offset cluster
- Road
- QPWS access road
- Watercourse
- Rail network
- Camera locations
- O = olfactory lure**
- A = audio lure**



Job number: PR5853
 Revision: 0
 Author: EK
 Date: 27/05/2021



GDA 1994 MGA Zone 56
 Projection: Transverse Mercator
 Datum: GDA 1994
 Units: Meter

3 Results

3.1 Statistical analysis

Red foxes

Foxes were recorded in all three offset clusters, with the greatest activity detected in Victory Heights, followed by Woondum and Curra (Table 2, Figure 5).

Wild dogs

Wild dogs were detected in Curra and Woondum, but not in Victory Heights. Activity was greatest in Curra, followed by Woondum and Victory Heights (Table 2, Figure 5). A number of domestic dogs were observed in Victory Heights and Curra. Because the domestic dogs were always observed either on-leash or accompanied by their owners, they were not considered a threat to koala and BBBQ in these areas. If domestic dogs are observed in future years roaming any offset cluster off-leash or unaccompanied, they will be considered a threat and included in the statistical analyses for 'dog' pest activity.

Feral cats

Feral cats¹ were detected in Curra, though to a far lesser extent than wild dogs and foxes (Table 2, Figure 5). Only two independent detections (two different individuals) were recorded in Victory Heights, meaning there was insufficient data to accurately calculate an activity index for feral cats in Victory Heights.

One domestic cat was recorded on one occasion in Woondum. Despite the cat being confirmed domestic (wearing a collar), it is important to note that domestic cats pose the same threat to BBBQ and should be managed appropriately (kept indoors by owners or pounded). All cats (domestic and feral) were therefore included in baseline activity index analyses and will be included in future analyses. As there was only one observation in Woondum, there was insufficient data to accurately calculate an activity index for feral cats in Woondum.

Feral pigs

Feral pigs were occasionally detected in Curra, though the sporadic nature of detections and the high variability of group sizes (1 – 15 individuals) meant the data were not suitable for estimating a reliable activity index. As feral pigs were not a target pest species in Curra (koala offsets), further statistical analysis was not conducted at this stage (but can be in future if required).

Table 2 and Figure 5 provide a summary of activity indices from statistical analyses. See Appendix 3 for R Studio analysis coding and Appendix 4 for raw data.

¹ Cats are assumed feral based on appearance and/or absence of a collar, but may include roaming domestic cats. Only collared cats are recorded as domestic.

Table 2 Activity indices calculated for each pest species in each offset cluster.

| Offset cluster | Pest activity indices (estimated no. of observations/camera/day) | | | |
|------------------------|---|-------------|----------------------------|-----------|
| | red fox | wild dog | feral cat | feral pig |
| Curra | 0.01418319 | 0.006889129 | 0.000937033 | N/A |
| Victory Heights | 0.03871399 | 0 | <i>Insufficient data*</i> | 0 |
| Woondum | 0.01894089 | 0.003664208 | <i>Insufficient data**</i> | 0 |

* two individual feral cats observed

** one domestic cat observed

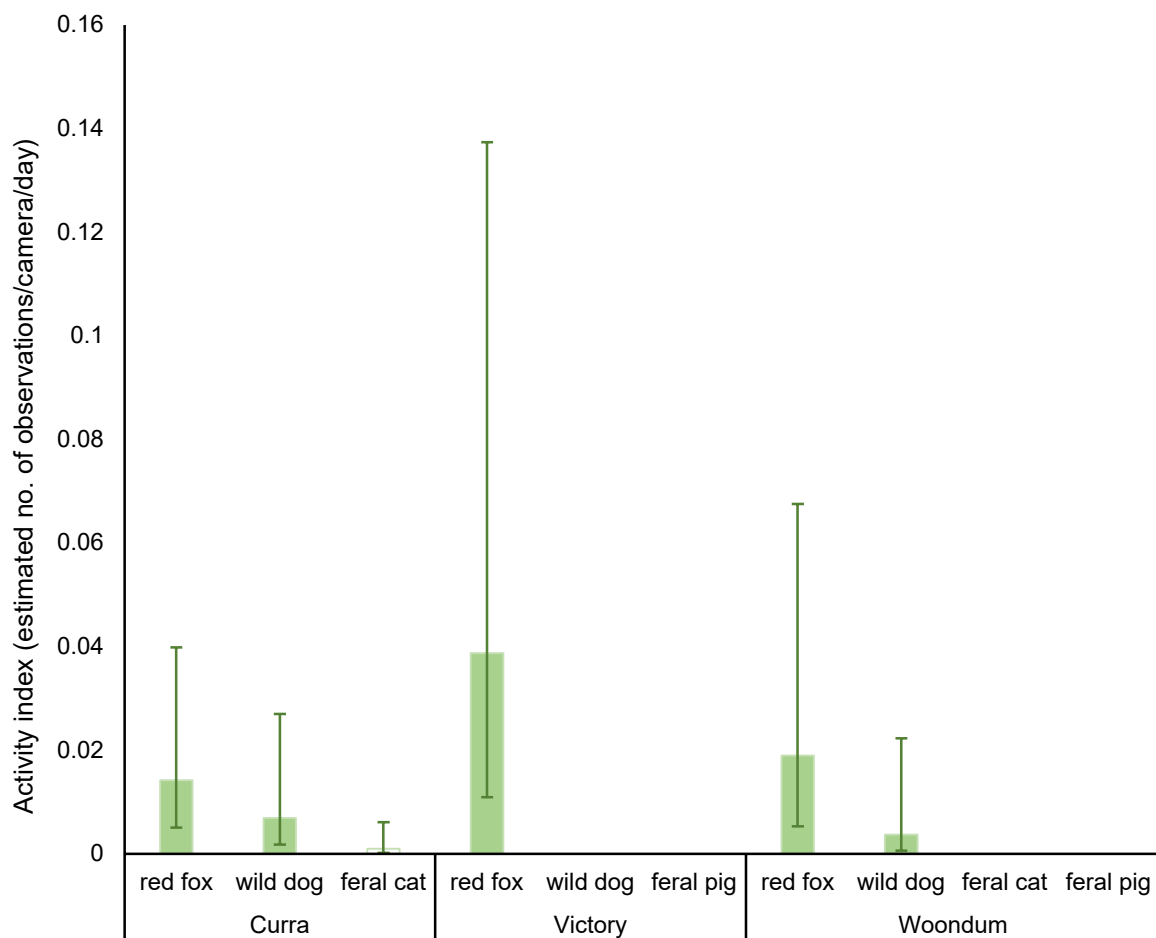


Figure 5 Pest activity indices estimated from statistical analyses, excluding species/sites with insufficient data (i.e. feral pigs in Curra and cats in Victory Heights and Woondum).

3.2 Summary of observations (non-statistical results)

Figure 6 summarises the number of independent pest observations in each offset cluster over the nine-week monitoring period. These data cannot be used in statistical analyses but do provide a clear representation of the raw data collected.

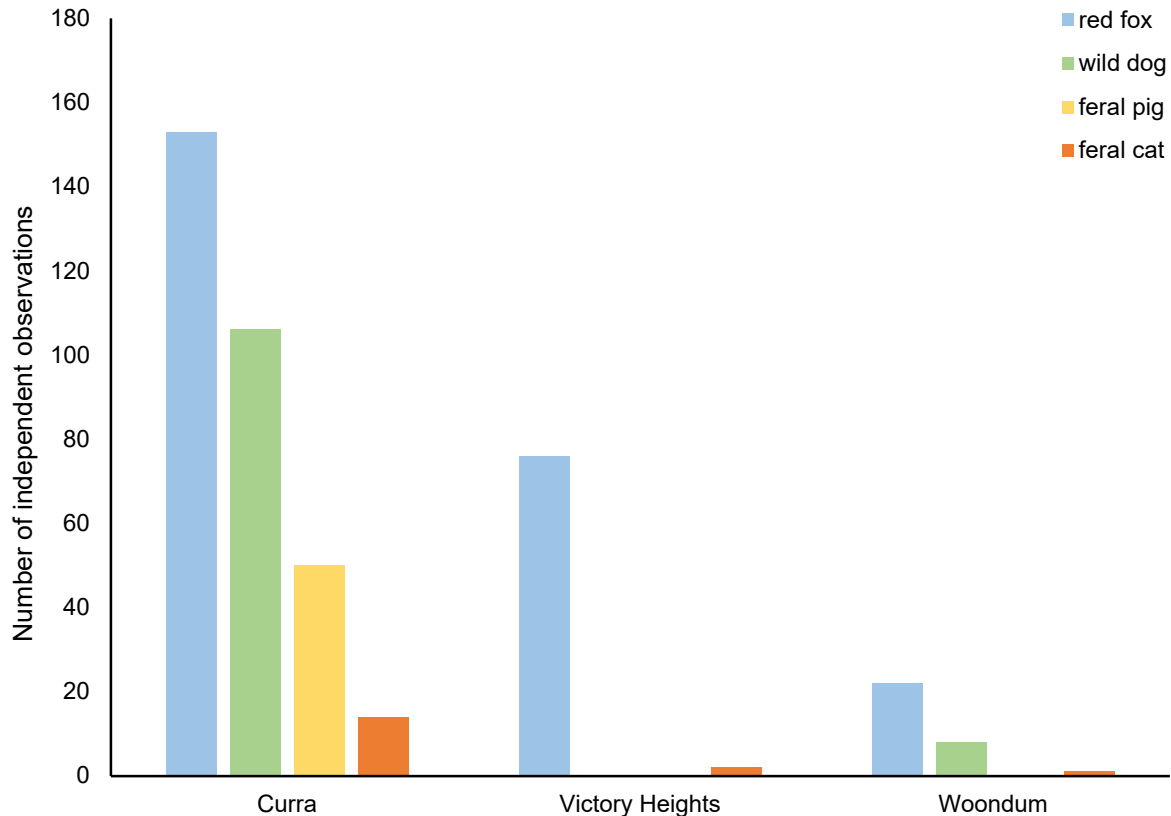


Figure 6 Total number of independent pest observations in each offset cluster.

3.2.1 Curra offset cluster

All four focal pest species (wild dog, red fox, feral cat, and feral pig) were captured on cameras within the Curra offset cluster. A total of 323 independent pest observations were made in Curra over the nine-week monitoring period: 153 red fox, 106 wild dog, 50 feral pig, and 14 feral cat observations (Figure 6).

Cattle and one domesticated donkey (captured wearing a harness) were also observed. Four wild dogs were frequently observed roaming together (Figure 7 a, b), often as a pack though sometimes in pairs or alone. The pack consisted of three tan/white dogs and one black/tan (sable colouration) dog. Notably, the pack was captured stalking and hunting an adult swamp wallaby around 2:00 am on the 2nd of March on camera 14 (Lot/Plan 1/MPH23906) (Figure 8).

a)



b)



Figure 7 Pack of four wild dogs frequently observed on cameras within the Curra offset sites.

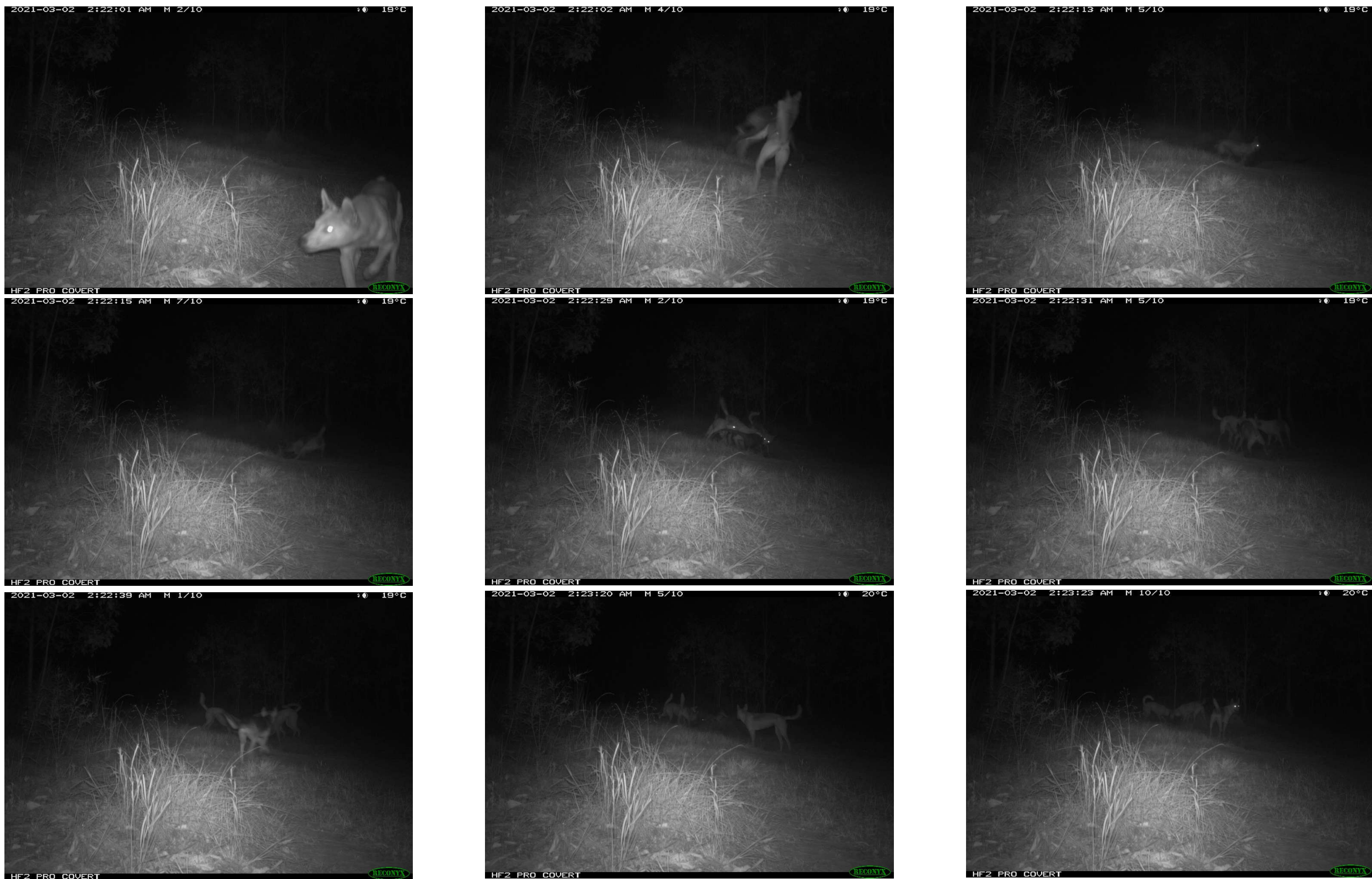


Figure 8 Pack of wild dogs stalking and hunting an adult swamp wallaby (sequence from left – right, top – bottom)

A koala was captured walking along a cleared track at 11:18 pm on the 1st of April on camera 33 (Lot/Plan 878/MCH1061) (Figure 9). This same camera also captured a feral cat, feral dogs, and red foxes on other nights, emphasising the importance of undertaking pest management in this offset area to conserve koalas. Notably, a wild dog was captured travelling in the same direction approximately 1.5 hours after the koala (Figure 10).



Figure 9 Koala captured on camera 33 in Curra offset site.



Figure 10 Wild dog captured on camera 33, 1.5 hours after the koala was captured.

3.2.2 Victory Heights offset cluster

Foxes and cats were captured on cameras within the Victory Heights offset cluster (Figure 11 a, b and Figure 12 a, b). A total of 78 independent pest observations were made in Victory Heights over the nine-week monitoring period: two feral cat and 76 red fox observations (Figure 6). No wild dogs or feral pigs were observed over the monitoring period.

a)



b)



Figure 11 Feral cats in Victory Heights offset sites captured on a) camera 58 and b) camera 67.

a)



b)



Figure 12 Red foxes in Victory Heights offset sites captured on camera 58.

3.2.3 Woondum offset cluster

Foxes and wild dogs were captured on cameras within the Woondum offset cluster. A total of 31 independent pest observations were made in Woondum over the nine-week monitoring period: 22 red fox, eight wild dog, and one domestic cat observation (Figure 6). Most wild dog observations only included one individual, although three individuals were captured on the 13th of April on camera 48 (Figure 13 a, b). Notably, camera 49 captured a wild dog carrying a medium-sized prey in its mouth (prey item unidentifiable due to image quality) (Figure 14).

The domestic cat captured on camera 45 (Lot/Plan 3/SP302524) (Figure 15) is assumed to belong to a resident/s from one of the Woondum Road properties. It was captured on a 'bush' camera baited with an olfactory and audio lure, though was not captured on any other camera, baited or not baited, over the nine-week monitoring period.

Two BBQs were captured on camera 55 (Lot/Plan 102/SP297908) on the 16th of February, and one BBQ was captured on camera 50 (Lot/Plan 2/SP302526) on the 14th of March (Figure 16 a, b).

a)



b)



Figure 13 Three wild dogs captured on camera 48 in Woondum offset cluster.



Figure 14 Wild dog carrying medium-sized prey in its mouth on camera 49 in Woondum offset cluster.

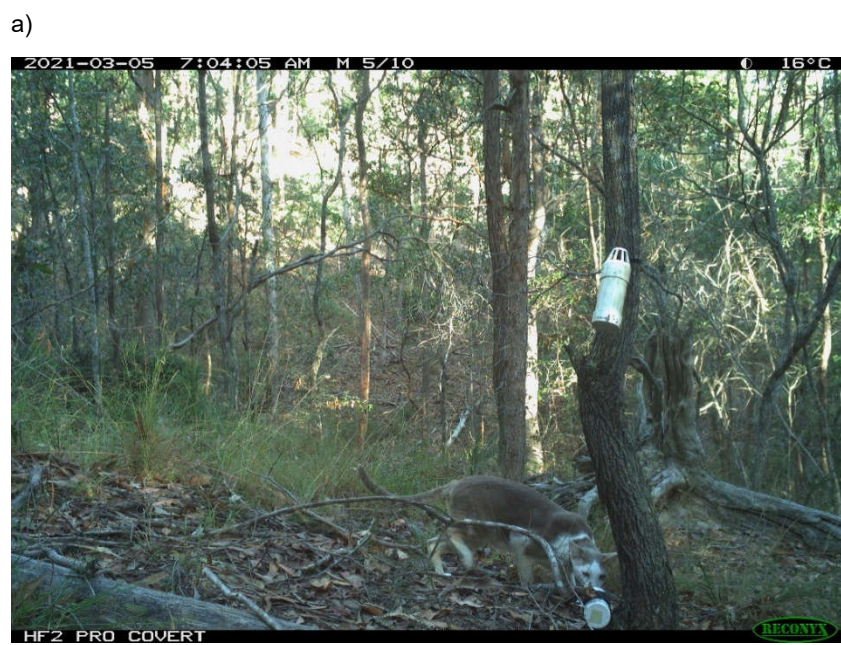


Figure 15 Domestic cat captured on camera 45 in Woondum offset cluster.



Figure 16 Black-breasted button-quails observed in Woondum offset sites; a) camera 55 b) camera 50.

3.3 Spatial analysis

3.3.1 Track type

All GLMM models included ‘track type’ as a random variable to account for variability in the results due to ‘track type’. Based on basic (non-statistical) analyses, the majority of pest animals were captured on cameras placed along movement corridors, particularly tracks (Table 3). These results are as expected for foxes and wild dogs known to prefer travelling along established movement corridors. It also provides insight into feral cat movement, suggesting that they too prefer to travel along established corridors in these offset properties.

Table 3 Pest animal observations per track type.

| Pest animal | Track type | | | | |
|------------------------|------------|-----------|---------------|-----------|----------------|
| | track | bush | dry creek bed | open area | small clearing |
| wild dog | 97 | 3 | 12 | 0 | 2 |
| red fox | 206 | 24 | 14 | 5 | 2 |
| cat (domestic & feral) | 13 | 3 | 1 | 0 | 0 |
| feral pig | 43 | 6 | 1 | 0 | 0 |
| Grand total | 359 | 36 | 28 | 5 | 4 |

3.3.2 Spatial mapping

Maps displaying the spatial distribution of pest animal activity within each offset cluster are provided below (Figure 17, 18, and 19).

Fox and wild dog activity was distributed relatively evenly across the Curra offset properties, with the majority of observations from cameras placed along movement corridors (Figure 17). Feral pigs were mainly captured on cameras on the eastern portion of the offset cluster, while feral cats appeared to occupy the middle portion of the Curra cluster (Figure 17).

Fox activity was evenly distributed across the Victory Heights offset properties (Figure 18). Only two cat observations were made over the nine-week monitoring period: one on the north-east boundary of the cluster and one near the western boundary. The proximity of these observations to surrounding houses may suggest they are domestic cats that are free to roam the offset properties, or they are feral cats that have access to anthropogenic food sources.

Wild dogs were only observed in the northern portion of the eastern Woondum cluster (Figure 19), while foxes appeared relatively evenly distributed across the entire cluster. The domestic cat was observed in the north-eastern corner of the eastern Woondum offset cluster approximately 190 m from the closest house (Figure 19).

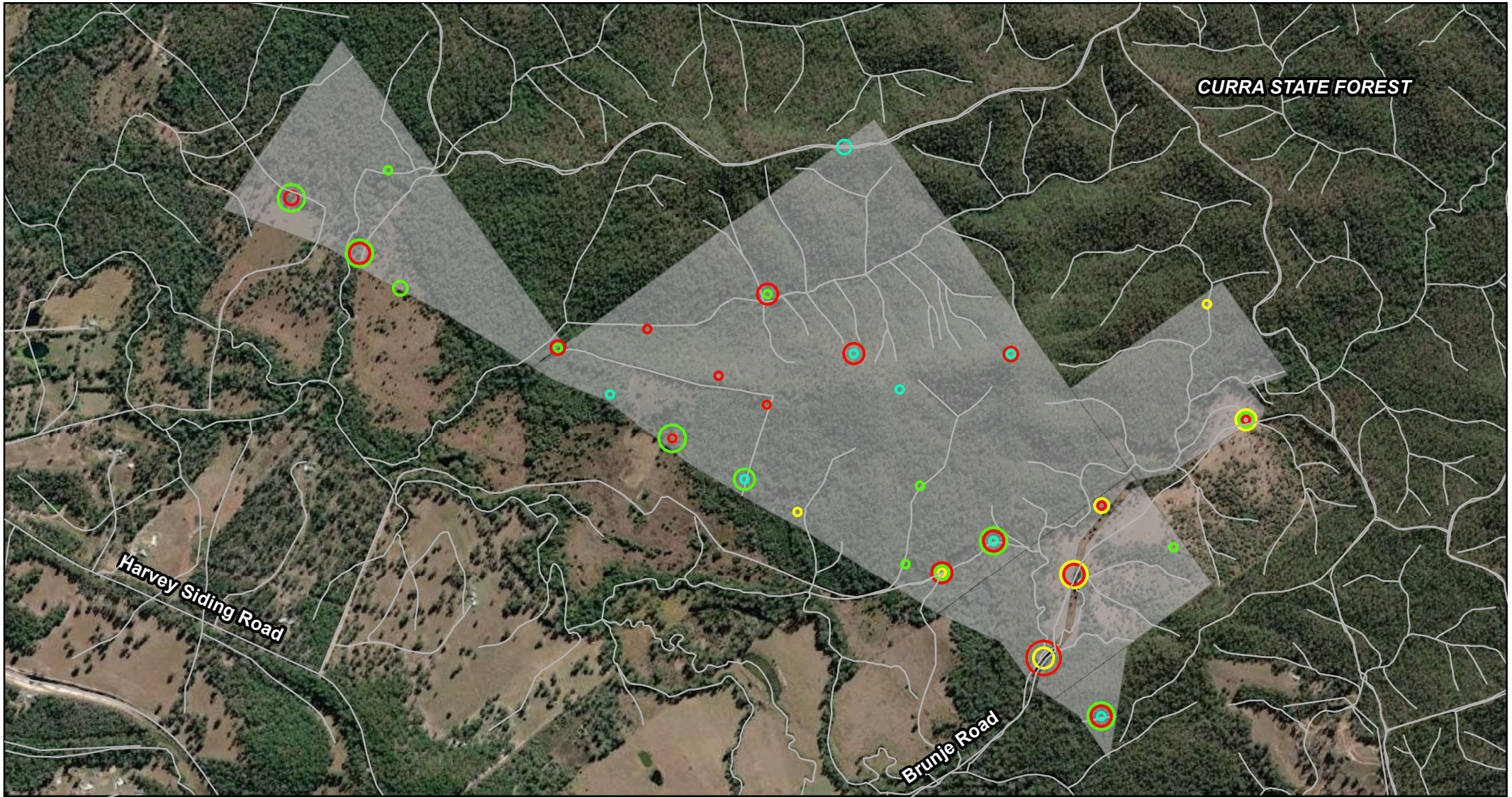


Figure 17: Pest animal activity in Curra offset properties

Gympie Regional Council

Offset Pest Animal Monitoring - Baseline Report

Offset cluster

Movement corridors

feral cat

feral pig

red fox

wild dog

No. of independent observations x count per observation

1 - 2

3 - 6

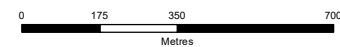
7 - 11

12 - 16

17 - 21



Job number: PR5853
Revision: 0
Author: EK
Date: 9/07/2021



GDA 1994 MGA Zone 56
Projection: Transverse Mercator
Datum: GDA 1994
Units: Meter

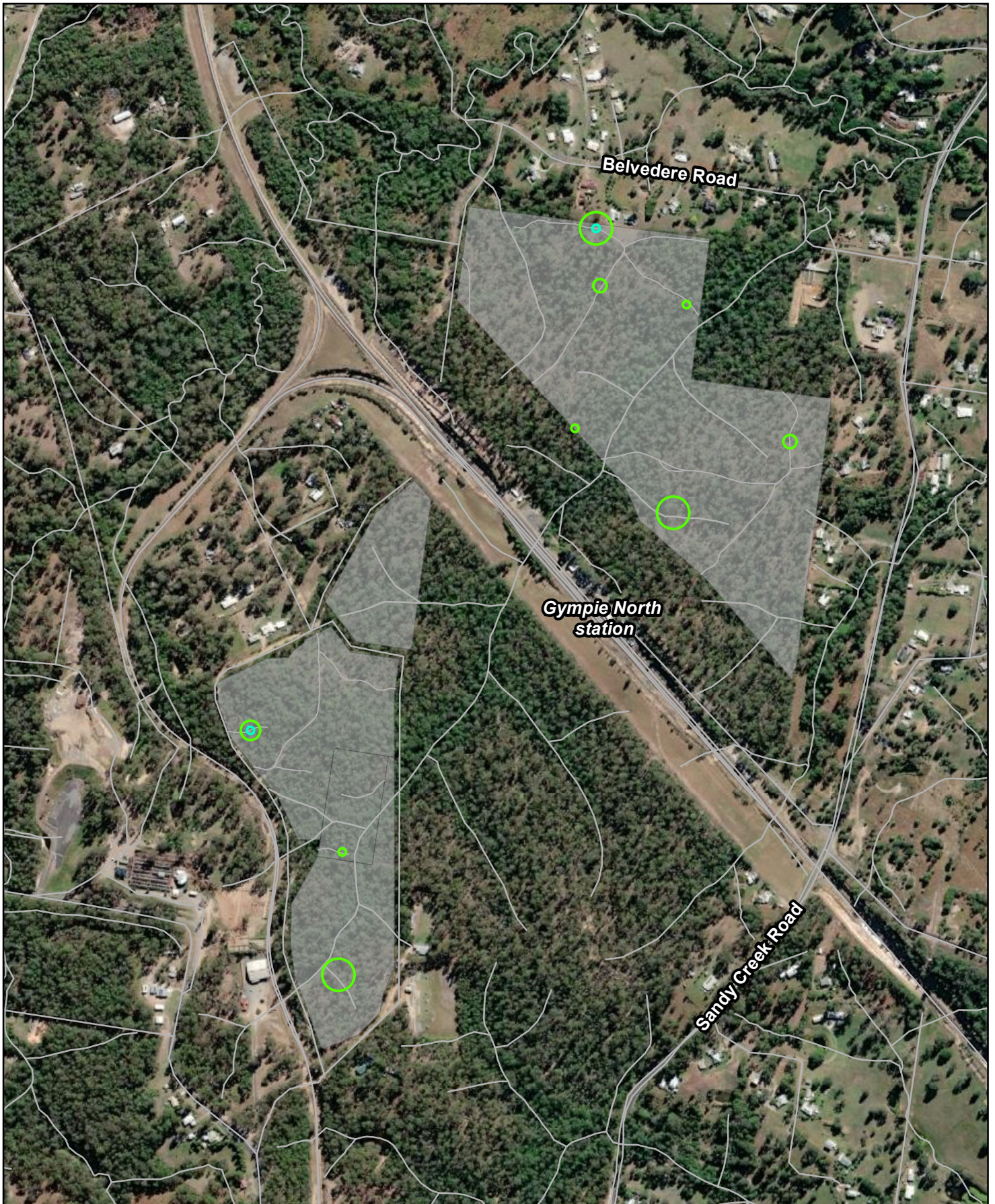


Figure 18: Pest animal activity in Victory Heights offset cluster

Gympie Regional Council
Offset Pest Animal Monitoring - Baseline Report

Offset cluster

Movement corridors

feral cat

red fox

No. of independent observations x count per observation

1 - 2

3 - 6

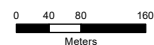
7 - 11

12 - 16

17 - 21



Job number: PR5853
Revision: 0
Author: EK
Date: 9/07/2021



GDA 1994 MGA Zone 56
Projection: Transverse Mercator
Datum: GDA 1994
Units: Meter



Figure 19: Pest animal activity in Woondum offset properties

Gympie Regional Council
Offset Pest Animal Monitoring - Baseline Report

- Offset cluster
- Movement corridors
- domestic cat
- red fox
- wild dog

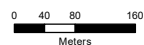
No. of independent observations x count per observation

- 1 - 2
- 3 - 6
- 7 - 11

- 12 - 16
- 17 - 21



Job number: PR5853
Revision: 0
Author: EK
Date: 9/07/2021



GDA 1994 MGA Zone 56
Projection: Transverse Mercator
Datum: GDA 1994
Units: Meter

4 Discussion

Results from the baseline monitoring period confirmed the presence of red fox in all three offset clusters, wild dogs in Curra and Woondum, cats in Curra (feral), Victory Heights (feral) and Woondum (domestic), and pigs in Curra. Although present, feral pigs and cats were not a target pest species in Curra.

Red fox activity indices were highest in Victory Heights, followed by Woondum and Curra offset clusters. Wild dog activity indices were highest in Curra, following by Woondum offset cluster. An activity index for feral cats could only be calculated for Curra, though two detections confirmed their presence in Victory Heights and one domestic cat was detected in Woondum. An activity index for feral pigs could not be accurately calculated for Curra due to the highly variable nature of data, though groups of 1 – 15 individuals were captured on cameras.

Given the proximity between cameras and length of survey period, the lack of detection in some offset clusters likely represent an absence of certain pest species at this point in time. However, monitoring was limited to one point in time (late summer/early autumn), and seasonal variation in pest movement may alter activity indices in these offset areas at different times of the year. For example, wild dog activity generally peaks in spring and early summer when wild dogs are dispersing after the breeding season (McNeill et al. 2016, DAF 2016, North Coast Local Land Services 2019). Thus, wild dog activity indices calculated during baseline monitoring is likely lower than the peak activity through the year. Similarly, fox densities have been shown to peak in summer (Coman et al. 1991), with cubs emerging from dens in late spring and dispersing from family territory in late summer to early winter (Gentle 2006, DSEWPC 2010). Unlike wild dogs and foxes, feral cats and feral pigs do not generally have a peak activity season/month as breeding is generally dictated by environmental conditions and resource availability (Mitchell & Balough 2007). Given the variable nature of pest movement, it is reasonable to assume that activity in offset areas may differ throughout the year. Therefore, the lack of detection during this baseline monitoring period does not confirm absence during the rest of the year, nor does it provide a definitive activity level for all times of the year. This factor, along with additional survey limitations discussion in Section 2.2 and Ecosure 2020, should be considered when developing the pest management strategy.

In addition, home ranges of these pest species can differ according to resource availability, meaning that shifts in resource availability may impact the movement of pests into and/or out of offset areas. Pest management efforts should consider the dynamic nature of pest species movement to ensure efficient and effective control.

The detection of offset target species (i.e. koala in Curra and BBQ in Woondum) emphasises the importance of undertaking effective pest management within offset sites.

Data collected from the 2021 survey will be compared after monitoring in 2022, and one-tailed z-tests will be used to determine how pest abundance (i.e. pest activity index) has changed. 2022 monitoring will replicate the 2021 survey using the exact camera placement, time of year, and statistical analyses. However, cameras will be deployed for the planned eight weeks, rather than nine weeks. As the activity indices are an estimated no. of observations / camera

/ day, the additional week of data collection may have improved the accuracy of the results but would not have introduced any bias. Therefore, assuming all other factors remain the same, direct comparisons can be made between baseline monitoring (nine weeks), 2022 monitoring (eight weeks), and subsequent years.

Results of this baseline monitoring will assist planning effective control, which will be detailed in a Pest Animal Management Strategy (PAMS) (planned for development). Pest management needs to consider potential movement of pest species in response to seasonal and environmental variables and be carefully timed to avoid potential inadvertent impacts (e.g. mesopredator release, which has the potential to have a negatively impact BBBQ population). The Pest Animal Management Strategy should consider research that can inform the program, for example genetic samples from wild dogs to determine dingo purity, and predator scat analyses to determine prey species. It should also ensure that control actions are targeted to locations of known pest animal activity at the time of planned control, highlighting the need for monitoring (cameras, tracks/scats etc) as part of the PAMS.

References

Bengsen A, Robinson R, Chaffey C, Gavenlock J, Hornsby V, Hurst R & Fosdick, M 2014, 'Camera trap surveys to evaluate pest animal control operations', *Ecological Management & Restoration*, vol. 15, no. 1, pp. 97-100.

Department of Agriculture and Fisheries (DAF) 2016, *Wild dog facts – Wild dog control planning calendar*, Department of Agriculture and Fisheries.

Department of Sustainability, Environment, Water, Population and Communities (DSEWPC) 2010, *European red fox (Vulpes vulpes)*, Australian Government, Canberra.

Ecosure 2020, *Pest Animal Monitoring Program*, Report to Gympie Regional Council, Brisbane.

Gentle, M 2006, *Red fox pest status review*, Department of Natural Resources and Water.

McNeill, A, Leung, L, Gouillet, M, Gentle, M, Allen, B 2016, 'Dingoes at the Doorstep: Home Range Sizes and Activity Patterns of Dingoes and Other Wild Dogs around Urban Areas of North-Eastern Australia', *Animals*, vol. 6, no. 8.

Mitchell, B, Balogh, S 2007, *Monitoring techniques for vertebrate pests*, NSW Department of Primary Industries, Orange.

North Coast Local Land Services (NCLLS) 2019, *Spring into wild dog action*, viewed 23 July 2020, <https://www.ils.nsw.gov.au/regions/north-coast/latest-news-and-newsletters/nc-news/2018/spring-into-wild-dog-action>

Read, J, Bengsen, A, Meek, P, Moseby, K 2015, 'How to snap your cat: optimum lures and their placement for attracting mammalian predators in arid Australia', *Wildlife Research*, vol. 42, pp. 1-12.

Thompson G, Thompson S, Bengsen A 2019, 'The value of camera traps in monitoring a feral-cat and fox reduction program', *Wildlife Research*, vol. 46, pp. 599-609.

Wysong M, Iacona G, Valentine L, Morris K, Ritchie E 2020, 'On the right track: placement of camera traps on roads improves detection of predators and shows non-target impacts of feral cat baiting', *Wildlife Research*, vol. 47, no. 8, pp. 557-569.

Appendix 1 Suitably qualified personnel

The following personnel were involved in the on-ground field work, statistical analyses, and reporting for this project. For a more extensive list of personnel involved in the design of the pest monitoring program, see Ecosure 2020.

| Name & role | Qualifications | Relevant experience |
|---|--|---|
| Jess Bracks Principal Wildlife Biologist <i>Reviewer</i> | Bachelor of Applied Science in Animal Studies (Wildlife Biology), University of Queensland, 2005 | Jess is a Wildlife Biologist with 14 years' practical experience in the veterinary, zoo and consulting industries. She is passionate about driving pragmatic wildlife management policy; balancing the needs of community and conservation. Jess is often invited to advise on policy for local, state and federal government. Jess has played pivotal roles in facilitating various multi-stakeholder groups with a focus on coordinated and strategic wildlife management and pest animal management at regional and national levels. Jess has prepared numerous pest animal management plans and programs and is often involved in on-ground monitoring and management. |
| Ellie Kirke Wildlife Biologist <i>Field work, statistical analyses, reporting</i> | Masters of Wildlife Health and Conservation, Murdoch University, current Bachelor of Science (Zoology, Ecology) (Honours), University of Queensland, 2018 | Ellie is a Wildlife Biologist with experience monitoring wildlife populations across Australia, including in the Northern Territory, Queensland, and Victoria. Ellie is well-versed in various fauna monitoring techniques including the use of cage, Elliott, pitfall and harp traps, motion sensing cameras and sound monitoring devices (e.g. call-playback). She has participated in various camera trapping programs for threatened and invasive species, including northern quolls, new holland mice, fox, feral cat, deer, and feral pigs in Victoria, South East Queensland, and Groote Eylandt. Ellie has conducted multiple koala surveys in the Otway Ranges using distance-sampling techniques to monitor population changes following mass die-off events resulting from over-abundance. She has also undertaken trials of new pig trapping technology with the Conservation Ecology Centre in Victoria. |
| Andrew Bengsen Vertebrate Pest Specialist, NSW DPI <i>Statistical analysis, reviewer</i> | PhD (Wildlife Biology), University of Queensland, 2010 Bachelor of Science (Honours) (Zoology and Tropical Ecology), James Cook University, 2003 | Andrew has over 15 years' experience in pest animal management and research and has been with the Vertebrate Pest Research Unit since 2011. Most of his current research aims to improve the management of introduced large herbivores by understanding the effects of different management tools, strategies and policies on herbivore populations and damage. He has a strong interest in developing and promoting wildlife survey and analysis methods that can provide the best quality information for managers and decision-makers. |
| Hannah Thomas Ecologist <i>Field work</i> | Bachelor of Advanced Science (Honours) (Ecology), University of Queensland, 2018 | Hannah is an Ecologist with experience working in a range of ecosystems across Australia. Hannah's experience includes both fauna and flora surveys in the NT, SA, NSW, VIC and Christmas Island. Prior to her role at Ecosure Hannah was a field ecologist with Australian Wildlife Conservancy, based at Mallee Cliffs National Park. Hannah has experience in conducting threatened mammal translocations, telemetry monitoring and targeted monitoring of threatened mammals and birds. She also completed two internships, with the Conservation Ecology Centre and Australian Wildlife Conservancy, where she conducted numerous koala surveys using the distance sampling method. |
| Bob Johnston Ecologist <i>Field work</i> | Bachelor of Environmental Science, Southern Cross University, 2012 | Bob has more than six years' experience as an Ecologist with experience in fauna spotter catching and ecological surveys, including Koala SAT and transect surveys. He has trained with Dr Steve Phillips (Biolink), including formal training on Spot Assessment Technique (SAT) surveys and assisting on koala research projects. He has also carried out aquatic and terrestrial habitat assessments, bird surveys, koala surveys, fauna trapping using Elliott, pitfall, and harp traps, spotlighting and flying-fox dispersal. |

Appendix 2 Camera locations

| Camera | Latitude | Longitude | Offset cluster | Site type | Bait status |
|--------|----------|-----------|----------------|---------------|-------------|
| 1 | -26.0669 | 152.6341 | Curra | track | no |
| 2 | -26.0675 | 152.6308 | Curra | bush | no |
| 3 | -26.0657 | 152.6325 | Curra | dry creek bed | no |
| 4 | -26.0636 | 152.6329 | Curra | dry creek bed | no |
| 5 | -26.0662 | 152.629 | Curra | dry creek bed | no |
| 6 | -26.065 | 152.6267 | Curra | track | no |
| 7 | -26.0713 | 152.6287 | Curra | track | no |
| 8 | -26.0693 | 152.6295 | Curra | bush | no |
| 9 | -26.0681 | 152.6274 | Curra | dry creek bed | no |
| 10 | -26.0705 | 152.6318 | Curra | open area | no |
| 11 | -26.073 | 152.6303 | Curra | open area | no |
| 12 | -26.0703 | 152.6261 | Curra | track | no |
| 13 | -26.0712 | 152.6245 | Curra | track | no |
| 14 | -26.0737 | 152.6277 | Curra | track | no |
| 15 | -26.0754 | 152.6295 | Curra | track | no |
| 16 | -26.0607 | 152.6235 | Curra | bush | no |
| 17 | -26.0641 | 152.6247 | Curra | dry creek bed | no |
| 18 | -26.0591 | 152.6214 | Curra | track | no |
| 19 | -26.0616 | 152.6197 | Curra | dry creek bed | no |
| 20 | -26.0626 | 152.6222 | Curra | dry creek bed | no |
| 21 | -26.0631 | 152.6073 | Curra | open area | no |
| 22 | -26.064 | 152.6098 | Curra | bush | no |
| 23 | -26.0648 | 152.6123 | Curra | track | no |
| 24 | -26.061 | 152.6091 | Curra | bush | no |
| 25 | -26.0605 | 152.6039 | Curra | open area | no |
| 26 | -26.0585 | 152.6045 | Curra | bush | no |
| 27 | -26.0597 | 152.607 | Curra | dry creek bed | no |

| Camera | Latitude | Longitude | Offset cluster | Site type | Bait status |
|--------|----------|-----------|----------------|----------------|-------------|
| 28 | -26.0621 | 152.6061 | Curra | track | no |
| 29 | -26.071 | 152.6233 | Curra | track | no |
| 30 | -26.0687 | 152.6238 | Curra | track | no |
| 31 | -26.0666 | 152.6247 | Curra | dry creek bed | no |
| 32 | -26.066 | 152.6231 | Curra | bush | no |
| 33 | -26.065 | 152.6217 | Curra | track | no |
| 34 | -26.0678 | 152.6218 | Curra | bush | no |
| 35 | -26.0695 | 152.6199 | Curra | track | no |
| 36 | -26.0664 | 152.6189 | Curra | track | no |
| 37 | -26.0686 | 152.6182 | Curra | track | no |
| 38 | -26.0674 | 152.6159 | Curra | track | no |
| 39 | -26.0661 | 152.614 | Curra | bush | no |
| 40 | -26.0643 | 152.6152 | Curra | dry creek bed | no |
| 41 | -26.0621 | 152.6167 | Curra | bush | no |
| 42 | -26.0633 | 152.619 | Curra | dry creek bed | no |
| 43 | -26.0656 | 152.6174 | Curra | bush | no |
| 44 | -26.2463 | 152.7148 | Woondum | bush | no |
| 45 | -26.2447 | 152.7138 | Woondum | bush | yes |
| 46 | -26.2475 | 152.7125 | Woondum | bush | no |
| 47 | -26.2452 | 152.7115 | Woondum | track | no |
| 48 | -26.2443 | 152.7092 | Woondum | track | no |
| 49 | -26.2463 | 152.7089 | Woondum | small clearing | yes |
| 50 | -26.2486 | 152.7103 | Woondum | bush | yes |
| 51 | -26.2501 | 152.7108 | Woondum | bush | yes |
| 52 | -26.2526 | 152.7124 | Woondum | bush | yes |
| 53 | -26.2494 | 152.7133 | Woondum | dry creek bed | yes |
| 54 | -26.2381 | 152.7002 | Woondum | bush | no |
| 55 | -26.24 | 152.7021 | Woondum | bush | yes |
| 56 | -26.2417 | 152.7029 | Woondum | bush | no |

| Camera | Latitude | Longitude | Offset cluster | Site type | Bait status |
|--------|----------|-----------|-----------------|---------------|-------------|
| 57 | -26.154 | 152.6801 | Victory Heights | track | no |
| 58 | -26.1526 | 152.6824 | Victory Heights | track | no |
| 59 | -26.1539 | 152.6841 | Victory Heights | track | no |
| 60 | -26.1559 | 152.682 | Victory Heights | bush | no |
| 61 | -26.1574 | 152.6838 | Victory Heights | dry creek bed | no |
| 62 | -26.1562 | 152.686 | Victory Heights | track | no |
| 63 | -26.1593 | 152.6856 | Victory Heights | dry creek bed | no |
| 64 | -26.1651 | 152.6777 | Victory Heights | dry creek bed | no |
| 65 | -26.1629 | 152.6777 | Victory Heights | track | no |
| 66 | -26.1609 | 152.676 | Victory Heights | track | no |
| 67 | -26.1583 | 152.6785 | Victory Heights | dry creek bed | no |
| 68 | -26.1603 | 152.6784 | Victory Heights | track | no |

Appendix 3 Statistical analysis coding

The following R Studio script was used to analyse the pest data for baseline surveys. Input coding is displayed in blue font and preceded by '>', while output is displayed in black font.

```
> library(ggplot2)
> library(lme4)
> #activity indices for wild dogs in Curra and Woondum
> dog1 <- glmer(count ~ site-1 + (1|track/camera), family="poisson", data = dog)
> dog1_sum <- summary(dog1)
> print(dog1_sum)
```

Generalized linear mixed model fit by maximum likelihood (Laplace Approximation) [glmerMod']

Family: poisson (log)

Formula: count ~ site - 1 + (1 | track/camera)

Data: dog

| AIC | BIC | logLik | deviance | df.resid |
|-------|--------|--------|----------|----------|
| 994.5 | 1019.5 | -493.2 | 986.5 | 3860 |

Scaled residuals:

| Min | 1Q | Median | 3Q | Max |
|---------|---------|---------|---------|---------|
| -0.5256 | -0.1383 | -0.0647 | -0.0504 | 16.7698 |

Random effects:

| Groups | Name | Variance | Std.Dev. |
|--------------|-------------|----------|----------|
| camera:track | (Intercept) | 2.118 | 1.455 |
| track | (Intercept) | 1.255 | 1.120 |

Number of obs: 3864, groups: camera:track, 56; track, 5

Fixed effects:

| | Estimate | Std. Error | z value | Pr(> z) |
|-------------|----------|------------|---------|--------------|
| sitecurra | -4.9778 | 0.6964 | -7.148 | 8.81e-13 *** |
| sitewoondum | -5.6091 | 0.9213 | -6.088 | 1.14e-09 *** |

Signif. codes: 0 '***' 0.001 '**' 0.01 '*' 0.05 '.' 0.1 ' ' 1

Correlation of Fixed Effects:

sitcrr

```

sitewoondum 0.544
> #expected number of dog detections per camera per day
> gi_dog1 <- exp(coefficients(dog1_sum)[, "Estimate"])
> print(gi_dog1)
  sitecurra sitewoondum
0.006889129 0.003664208
> #confidence intervals for the estimates
> lo_dog1 <- exp(coefficients(dog1_sum)[, "Estimate"] - 1.96 * coefficients(dog1_sum)[, "Std. Error"])
> up_dog1 <- exp(coefficients(dog1_sum)[, "Estimate"] + 1.96 * coefficients(dog1_sum)[, "Std. Error"])
> print(lo_dog1)
  sitecurra sitewoondum
0.001759477 0.000602185
> print(up_dog1)
  sitecurra sitewoondum
0.02697399 0.02229617

> #activity indices for red foxes in all offset clusters
> fox1 <- glmer(count ~ site-1 + (1|track/camera), family="poisson", data = fox)
> fox1_sum <- summary(fox1)
> print(fox1_sum)
Generalized linear mixed model fit by maximum likelihood (Laplace Approximation) [glmerMod]
Family: poisson ( log )
Formula: count ~ site - 1 + (1 | track/camera)
Data: fox

      AIC      BIC  logLik deviance df.resid
1690.9  1723.0  -840.4  1680.9    4573

Scaled residuals:
  Min     1Q  Median     3Q      Max
-0.5365 -0.2110 -0.1245 -0.0748  13.6641

Random effects:
  Groups      Name      Variance Std.Dev.
camera:track (Intercept) 1.5763   1.2555
track      (Intercept) 0.8394   0.9162
Number of obs: 4578, groups: camera:track, 67; track, 5

```


Fixed effects:

| | Estimate | Std. Error | z value | Pr(> z) |
|-------------|----------|------------|---------|--------------|
| sitecurra | -4.2557 | 0.5269 | -8.077 | 6.64e-16 *** |
| sitevictory | -3.2516 | 0.6460 | -5.033 | 4.83e-07 *** |
| sitwoondum | -3.9664 | 0.6485 | -6.116 | 9.59e-10 *** |

Signif. codes: 0 '***' 0.001 '**' 0.01 '*' 0.05 '.' 0.1 ' ' 1

Correlation of Fixed Effects:

| | sitcrr | stvctr |
|-------------|--------|--------|
| sitevictory | 0.651 | |
| sitwoondum | 0.572 | 0.449 |

> #expected number of fox detections per camera per day

```
> gi_fox1 <- exp(coefficients(fox1_sum)[, "Estimate"])
```

```
> print(gi_fox1)
```

```
sitecurra sitevictory sitwoondum
```

```
0.01418319 0.03871399 0.01894089
```

> #confidence intervals for the estimates

```
> lo_fox1 <- exp(coefficients(fox1_sum)[, "Estimate"] - 1.96 * coefficients(fox1_sum)[, "Std. Error"])
```

```
> up_fox1 <- exp(coefficients(fox1_sum)[, "Estimate"] + 1.96 * coefficients(fox1_sum)[, "Std. Error"])
```

```
> print(lo_fox1)
```

```
sitecurra sitevictory sitwoondum
```

```
0.005049778 0.010912998 0.005313353
```

```
> print(up_fox1)
```

```
sitecurra sitevictory sitwoondum
```

```
0.03983597 0.13733837 0.06751994
```

> #activity indices for cats in Woondum

```
> cat1 <- glmer(count ~ 1 + (1|track/camera), family="poisson", data = cat)
```

```
> cat1_sum <- summary(cat1)
```

```
> print(cat1_sum)
```

Generalized linear mixed model fit by maximum likelihood (Laplace Approximation) [glmerMod]

Family: poisson (log)

Formula: count ~ 1 + (1 | track/camera)

Data: cat

| AIC | BIC | logLik | deviance | df.resid |
|-------|-------|--------|----------|----------|
| 166.4 | 184.4 | -80.2 | 160.4 | 2964 |

Scaled residuals:

| Min | 1Q | Median | 3Q | Max |
|---------|---------|---------|---------|---------|
| -0.2650 | -0.0310 | -0.0284 | -0.0273 | 12.2129 |

Random effects:

| Groups | Name | Variance | Std.Dev. |
|--------------|-------------|----------|----------|
| camera:track | (Intercept) | 3.51312 | 1.8743 |
| track | (Intercept) | 0.07987 | 0.2826 |

Number of obs: 2967, groups: camera:track, 43; track, 5

Fixed effects:

| | Estimate | Std. Error | z value | Pr(> z) |
|-------------|----------|------------|---------|--------------|
| (Intercept) | -6.9745 | 0.9541 | -7.31 | 2.68e-13 *** |

Signif. codes: 0 '***' 0.001 '**' 0.01 '*' 0.05 '.' 0.1 ' ' 1

> #expected number of cat detections per camera per day

> gi_cat1 <- exp(coefficients(cat1_sum)[, "Estimate"])

> print(gi_cat1)

[1] 0.0009370326

> #confidence intervals for the estimates

> lo_cat1 <- exp(coefficients(cat1_sum)[, "Estimate"] - 1.96 * coefficients(cat1_sum)[, "Std. Error"])

> up_cat1 <- exp(coefficients(cat1_sum)[, "Estimate"] + 1.96 * coefficients(cat1_sum)[, "Std. Error"])

> print(lo_cat1)

[1] 0.000144785

> print(up_cat1)

[1] 0.006064371

Appendix 4 Statistical output summary

| Site | Pest animal | Activity index | Lower confidence interval | Upper confidence interval |
|-----------------|-------------|----------------|---------------------------|---------------------------|
| Curra | red fox | 0.01418319 | 0.005049778 | 0.03983597 |
| | wild dog | 0.006889129 | 0.001759477 | 0.02697399 |
| | feral cat | 0.000937033 | 0.000144785 | 0.006064371 |
| | feral pig | N/A | | |
| Victory Heights | red fox | 0.03871399 | 0.010912998 | 0.13733837 |
| | wild dog | 0 | 0 | 0 |
| | feral cat | N/A | | |
| | feral pig | 0 | 0 | 0 |
| Woondum | red fox | 0.01894089 | 0.005313353 | 0.06751994 |
| | wild dog | 0.003664208 | 0.000602185 | 0.02229617 |
| | feral cat | N/A | | |
| | feral pig | 0 | 0 | 0 |

Revision History

| Revision No. | Revision date | Details | Prepared by | Reviewed by | Approved by |
|--------------|---------------|--|---------------------------------|---|------------------------------|
| 00 | 11/06/2021 | Offset Pest Animal Monitoring – Baseline Report DRAFT | Ellie Kirke, Wildlife Biologist | Jess Bracks, Principal Wildlife Biologist | Phil Shaw, Managing Director |
| 01 | 1/07/2021 | Offset Pest Animal Monitoring – Baseline Report DRAFT R1 | Ellie Kirke, Wildlife Biologist | Jess Bracks, Principal Wildlife Biologist | |
| 02 | 9/07/2021 | Offset Pest Animal Monitoring – Baseline Report | Ellie Kirke, Wildlife Biologist | Jess Bracks, Principal Wildlife Biologist | |

Distribution List

| Copy # | Date | Type | Issued to | Name |
|--------|-----------|------------|-------------------------|----------------|
| 1 | 9/07/2021 | Electronic | Gympie Regional Council | Bree Galbraith |
| 2 | 9/07/2021 | Electronic | Ecosure | Administration |

Citation: Ecosure, 2021, *Offset Pest Animal Monitoring – Baseline Report*, Report to Gympie Regional Council. Brisbane

Report compiled by Ecosure Pty Ltd

ABN: 63 106 067 976

admin@ecosure.com.au www.ecosure.com.au

PR5853-RE.Baseline Pest Animal Monitoring Report R2

Adelaide

PO Box 145
Pooraka SA 5095
P 1300 112 021
M 0407 295 766

Brisbane

PO Box 675
Fortitude Valley QLD 4006
P 07 3606 1030

Coffs Harbour

PO Box 4370
Coffs Harbour Jetty NSW 2450
P 02 5621 8103

Gladstone

PO Box 5420
Gladstone QLD 4720
P 07 4994 1000

Gold Coast

PO Box 404
West Burleigh QLD 4219
P 07 5508 2046
F 07 5508 2544

Rockhampton

PO Box 235
Rockhampton QLD 4700
P 07 4994 1000

Sunshine Coast

PO Box 1457
Noosaville QLD 4566
P 07 5357 6019

Sydney

PO Box 880
Surry Hills NSW 2010
P 1300 112 021

Townsville

PO Box 2335
Townsville QLD 4810
P 1300 112 021



© Ecosure Proprietary Limited 2021

Commercial in confidence. The information contained in this document produced by Ecosure Pty Ltd is solely for the use of the Client identified on the cover sheet for the purpose for which it has been prepared and Ecosure Pty Ltd undertakes no duty to or accepts any responsibility to any third party who may rely upon this document. All rights reserved. No section or element of this document may be removed from this document, reproduced, electronically stored or transmitted in any form without the written permission of Ecosure Pty Ltd.