

# Queensland Train Manufacturing Program

## Ormeau rail facility update – August 2024

Construction of the Department of Transport and Main Roads' (TMR) Queensland Train Manufacturing Program (QTMP) Ormeau rail facility is progressing. Initial works have included establishing site accesses, setting up site compounds and undertaking bulk earthworks. In parallel, the design of the facility has been progressing.

To inform the design, between December 2023 and March 2024, we asked you for feedback about the facility concept design as well as what's important to you in the Ormeau community.

Thank you for the time taken to provide this feedback. Where we can, this feedback is being used to inform the final design. We expect to finalise the design in early 2025.

### Key feedback themes – you told us:



To minimise the impact of rail facility traffic on Goldmine Road.



You would like measures in place to minimise the impact of 24/7 operations (noise and light) on nearby houses.



You would like vegetation planted to improve the outlook for nearby residents.



You would like measures in place to protect local fauna and flora.



To not worsen flooding in the local area.

### Goldmine Road upgrade

The Department of Transport and Main Roads (TMR) has reached an agreement with the City of Gold Coast to upgrade Goldmine Road in Ormeau as part of QTMP.

The upgrade will include constructing the permanent rail facility entrance, which is located on Goldmine Road.

The City of Gold Coast is funding the design and construction of the Goldmine Road upgrade. TMR will deliver this upgrade. TMR is funding the design and construction of the rail facility entrance (including intersection) on Goldmine Road.

Combining the permanent rail facility entrance into the upgrade will minimise the impact of construction on the nearby school, residents and road users.

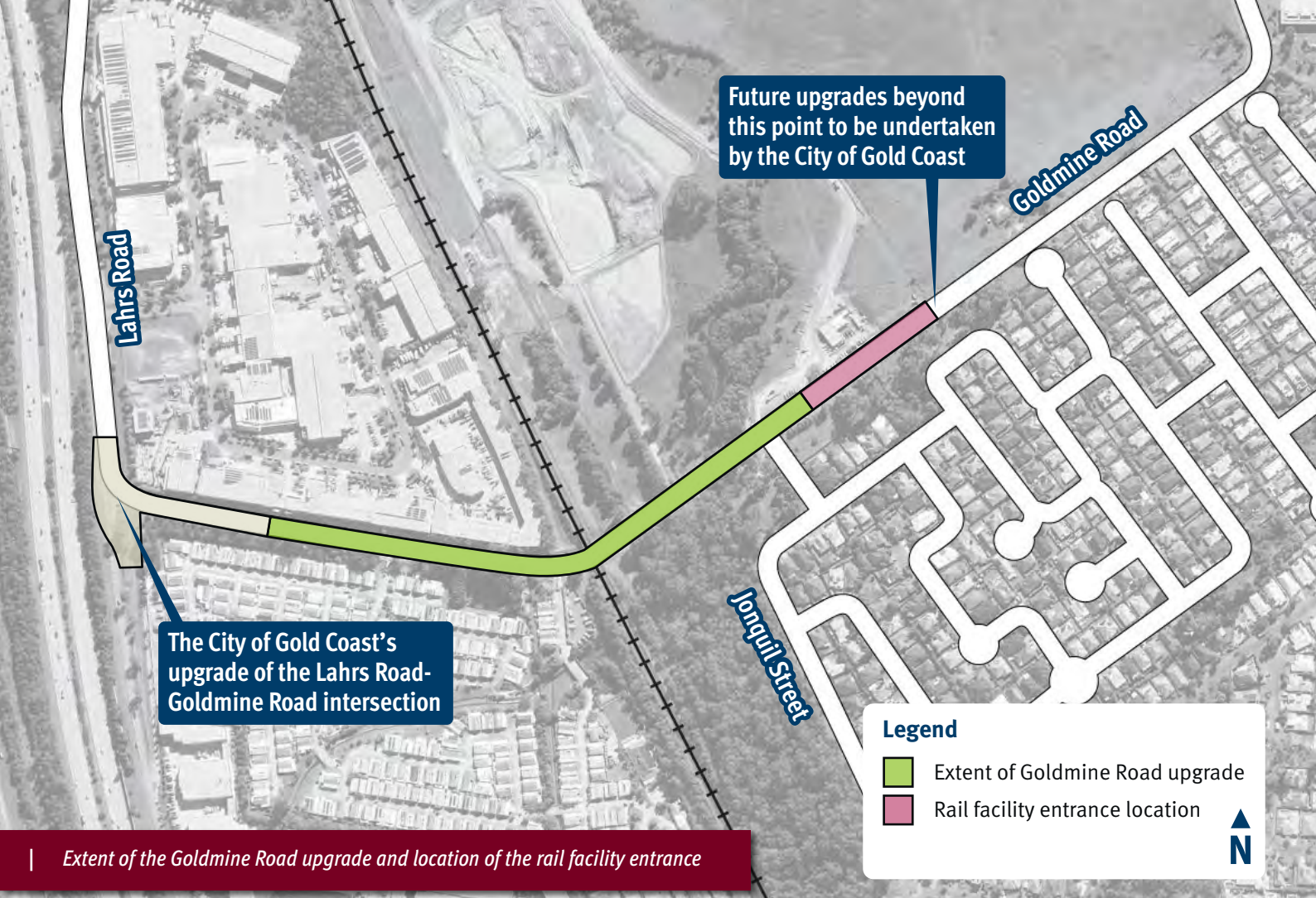
The upgrade responds to community feedback about the rail facility and its impact on Goldmine Road when the facility is being used for train maintenance and stabling.

Further information about the upgrade, including a map that shows the extent of Goldmine Road to be upgraded as part of QTMP, is available on page 2.

QTMP is part of Queensland's Big Build. The Queensland Government is continuing to deliver the economic and social infrastructure needed to support our growing state.



Queensland  
Government



Map is illustrative only and not to scale

## Goldmine Road upgrade

TMR's upgrade of Goldmine Road will tie into the City of Gold Coast's upgrade of the Lahrs Road and Goldmine Road intersection, which is scheduled to start in September 2024.

The concept design for the Goldmine Road upgrade includes:

- widening the existing lanes adjacent to the City of Gold Coast's upgrade at Lahrs Road
- laying new asphalt to replace the existing surface
- improving flood immunity, including installing kerb and channel and new drainage
- installing off-road shared user paths to improve active transport outcomes
- creating a new intersection for the rail facility entrance, with dedicated turning lanes into the rail facility to keep through-traffic moving
- installing dedicated pedestrian crossings at the rail facility entrance to improve safety.

Traffic assessments are underway to inform the rail facility entrance design, including whether the entrance will be signalised.

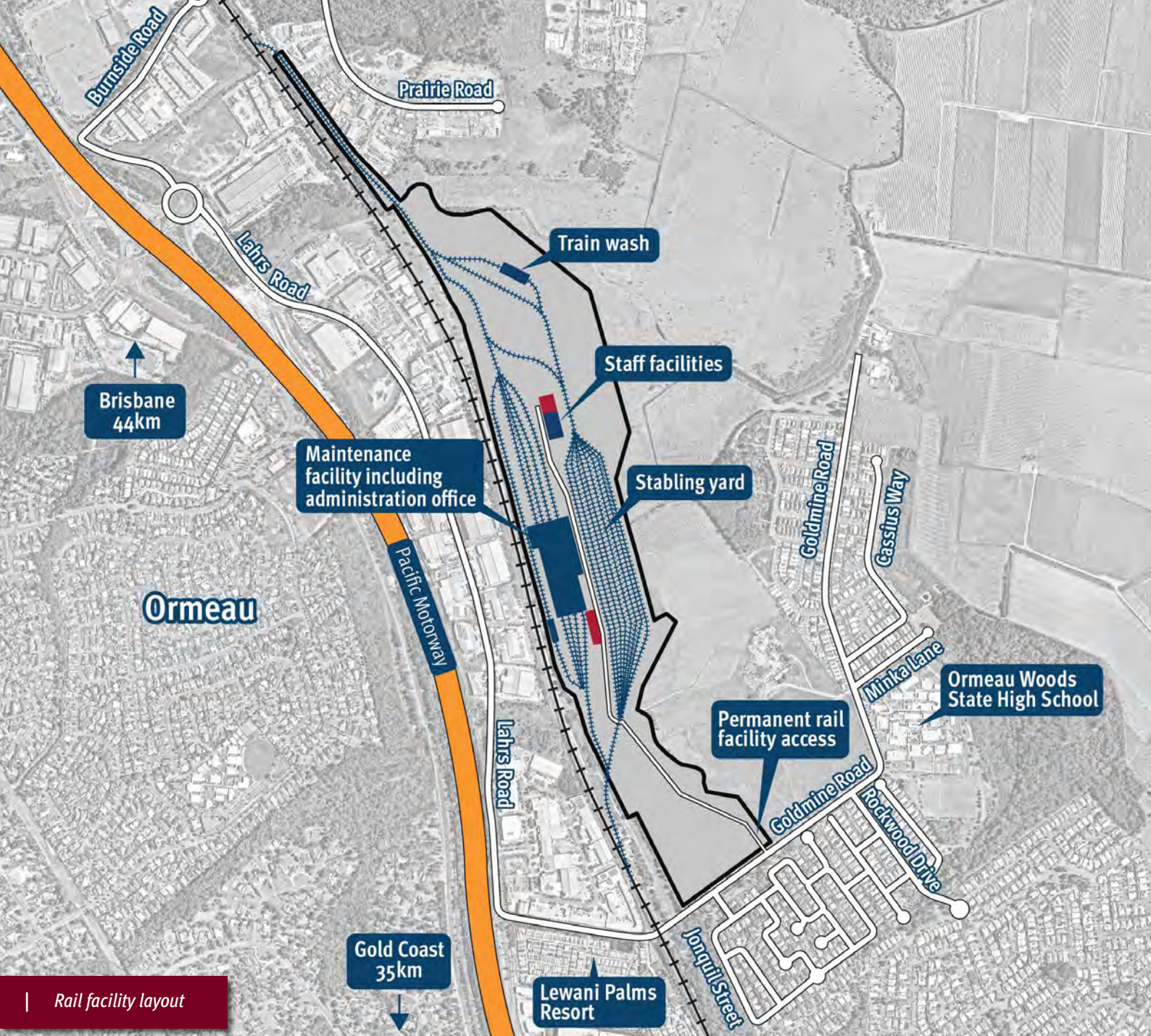
The design of the Goldmine Road upgrade including the rail facility entrance is in the early stages with construction scheduled to commence late 2025.

TMR will keep the local community informed as the design progresses.

Any future upgrades of Goldmine Road to the east of the rail facility entrance is the responsibility of the City of Gold Coast.

## The Ormeau rail facility – supporting South East Queensland's rail network

The Ormeau rail facility will support South East Queensland's growing train fleet and have two separate purposes – maintenance and stabling.



Map is illustrative only and not to scale

### Maintenance facility

The maintenance facility will service the new QTMP fleet. Like cars, trains require regular routine maintenance. Well-maintained trains help ensure customers have access to a safe, reliable and efficient rail system.

Key features of the facility include:

- maintenance facilities for 5 trains
- train wash
- Automated Visual Inspection System
- graffiti wash
- bogie overhaul workshop
- Integrated Operations Centre.

### Stabling yard

The Ormeau stabling yard will have capacity to house up to 20, six-car trains at any given time. The stabling yard will be used by all trains on the network, not just those manufactured as part of QTMP.

Trains will be stabled at the Ormeau yard when they are not in operation. Trains will return to Ormeau at the end of service and will be parked on the site throughout the night (or when they are not in use). At night, trains parked at Ormeau will be cleaned internally and prepared for the next day's service. Sometimes this might include minor maintenance activities, removing waste, decanting and routine inspections.



| Aerial looking north – December 2022



| Aerial looking north (of the temporary northern access road and site compound) – June 2024

## Managing the impact of the train maintenance and stabling on the community

Both the maintenance facility and stabling yard will operate 24 hours a day, 7 days a week.

We are mindful the rail facility shares a boundary with a residential area off Goldmine Road, however, the maintenance shed and stabling yard are located approximately 1 kilometre (1097m) away from the nearest resident.

New train track to connect the stabling yard into the existing rail line will be built at both the northern and southern ends of the site.

The rail facility is being designed to comply with relevant standards for noise. Some night noise from the stabling facility is likely to be audible and unavoidable. Before commencing service, train drivers must test the train horn for safety reasons. Trains exiting and entering the stabling facility must sound their horn. Noise modelling will be undertaken to determine whether noise mitigation measures are required. This information will be known in 2025.

### Contact us

Find out more online at [www.tmr.qld.gov.au/trainmanufacturing](http://www.tmr.qld.gov.au/trainmanufacturing)

Email [qtmp@tmr.qld.gov.au](mailto:qtmp@tmr.qld.gov.au) | Call **1800 271 176\*** | Post PO Box 830, Brisbane QLD 4000

Contact us for alternate accessible formats or for Translation Services.

*\*Monday to Friday during business hours. Free call from anywhere in Australia, call charges may apply for mobile phones.*

### Stay up to date.

Subscribe to receive email updates and notifications.

