

# Kawana Motorway

A new north-south high-speed alternative

July 2023



Artist's impression





# The Department of Transport and Main Roads (TMR) is planning for a new motorway to help **keep traffic moving on the Sunshine Coast.**

The Kawana Motorway will provide a direct connection between Parrearra (the planned Mooloolah River Interchange at Kawana Way) and Meridan Plains (Kawana Way Link Road). This aims to reduce traffic congestion and improve travel times and safety on other major roads in the area including Kawana Way and Nicklin Way, particularly for public transport. It also provides a north-south high-speed alternative to the Bruce Highway.

This project will ensure road infrastructure can accommodate traffic demand and sustain ongoing population and economic growth. In particular, it will address rapid urban growth in new emerging communities including Caloundra South (Aura) and Palmview (Harmony). It will also provide improved access to the Birtinya Town Centre, the Sunshine Coast University Hospital and Sunshine Coast Health Precinct.

Transport modelling of forecast traffic volumes, which takes into consideration other planned projects including rail, public transport and future developments, has confirmed the need for this new motorway parallel to Kawana Way.

Following an options analysis, early design development with consideration of the heavy rail interface and proposed station locations, investigation work such as geotechnical field studies and initial community consultation, TMR has now developed concept designs for the new motorway including proposed interchange locations and layouts.

The motorway is proposed to be constructed in stages, with a two-lane road to provide connectivity and reduce congestion, followed by a future four-lane motorway to cater for longer-term traffic volumes. Additionally, the concept design for this project and nearby projects also allows space for a potential six-lane upgrade to minimise impacts to the community in the future.

This project is part of the \$5 million Southern Sunshine Coast Roads Improvement Study, funded by the Australian Government.



## Connecting Kawana Motorway to nearby roads

The new motorway is proposed to connect to the local road network with interchanges in three locations.

These interchanges are proposed for:

- Woodlands Boulevard in Meridan Plains (narrow diamond interchange between Woodlands Boulevard and Creekside Boulevard providing access to Kawana Way)
- Birtinya Town Centre (northbound access to the motorway from Lake Kawana Boulevard, and southbound access to Lake Kawana Boulevard and to Station Road)
- Kawana Way interchange providing north-facing ramps to the Mooloolah River crossing. The river crossing component of the Mooloolah River Interchange is proposed to be constructed prior to the Kawana Motorway, as this creates the new high-speed north–south motorway connection.

An overpass is also proposed at Main Drive, from Metier Linkway, to connect local traffic from east to west.

## Property impacts

The new motorway is designed mostly within a preserved transport corridor, alongside the proposed Direct Sunshine Coast Rail Line. As design standards and transport requirements have changed since the corridor was originally preserved, some additional properties may be impacted for this project.

## Business case planning

TMR is required to undertake extensive planning before a project can be constructed. Business cases are one component of this planning, which determine and recommend a preferred option for new projects or upgrades from an engineering perspective, as well as financial, social, legislative and environmental considerations. Once a business case is approved, a project can be considered for funding for detailed design and construction.

## Travel options for the future

TMR is planning for road, public transport and active transport projects to get the Sunshine Coast's growing number of residents and visitors where they need to go. Nearby projects have been considered in the planning for this project, including:

- Direct Sunshine Coast Rail Line
- Mooloolah River Interchange
- Caloundra Road/Kawana Way Link Road/Bells Creek Arterial Road intersection upgrade
- Sunshine Coast Public Transport project.

## Have your say

Community consultation is an important part of the business case planning process. Feedback will also be considered during detailed design and construction to ensure the upgrade is suited to all user groups and impacts to stakeholders are minimised.

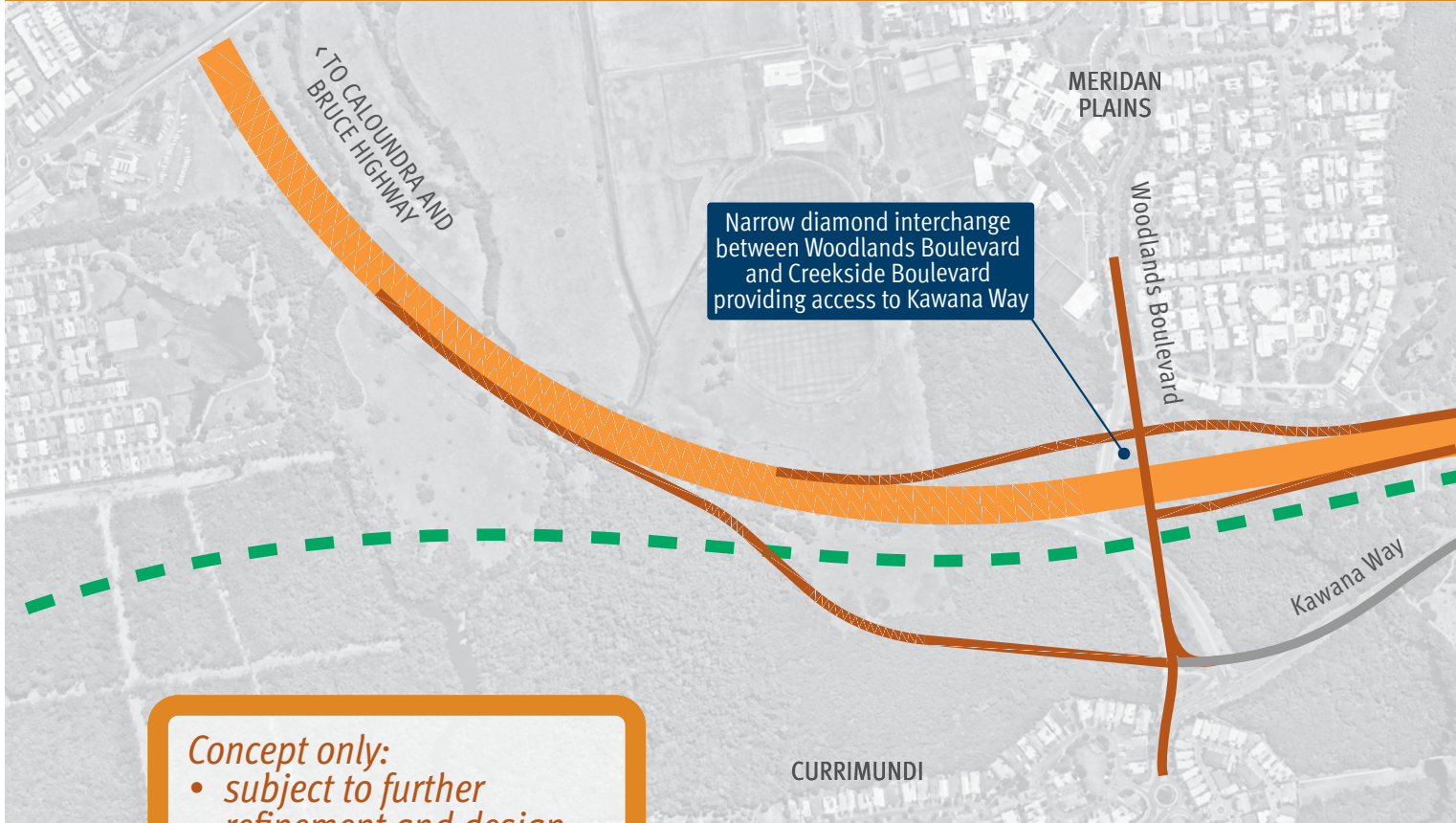
View the designs and provide feedback.

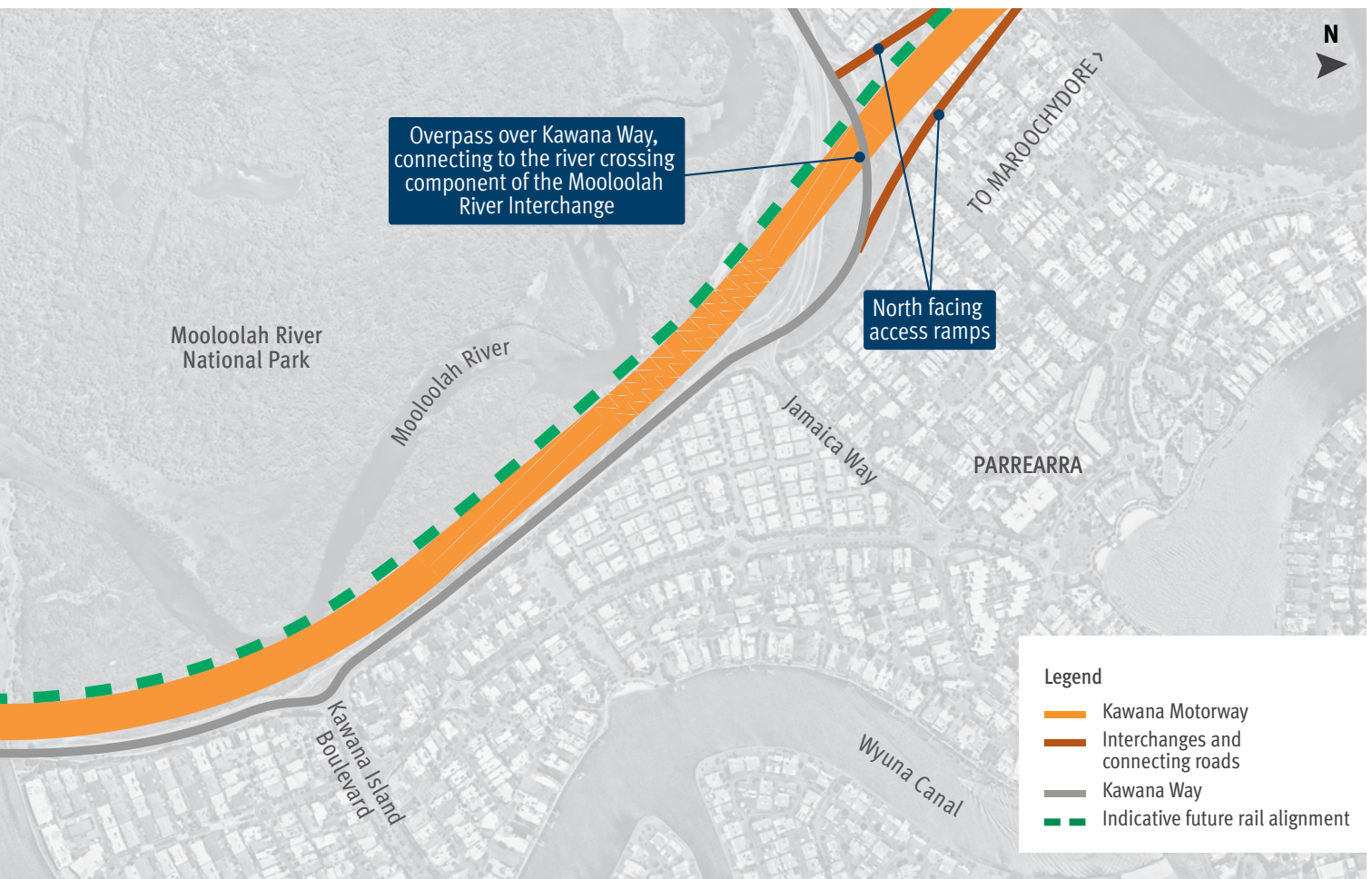
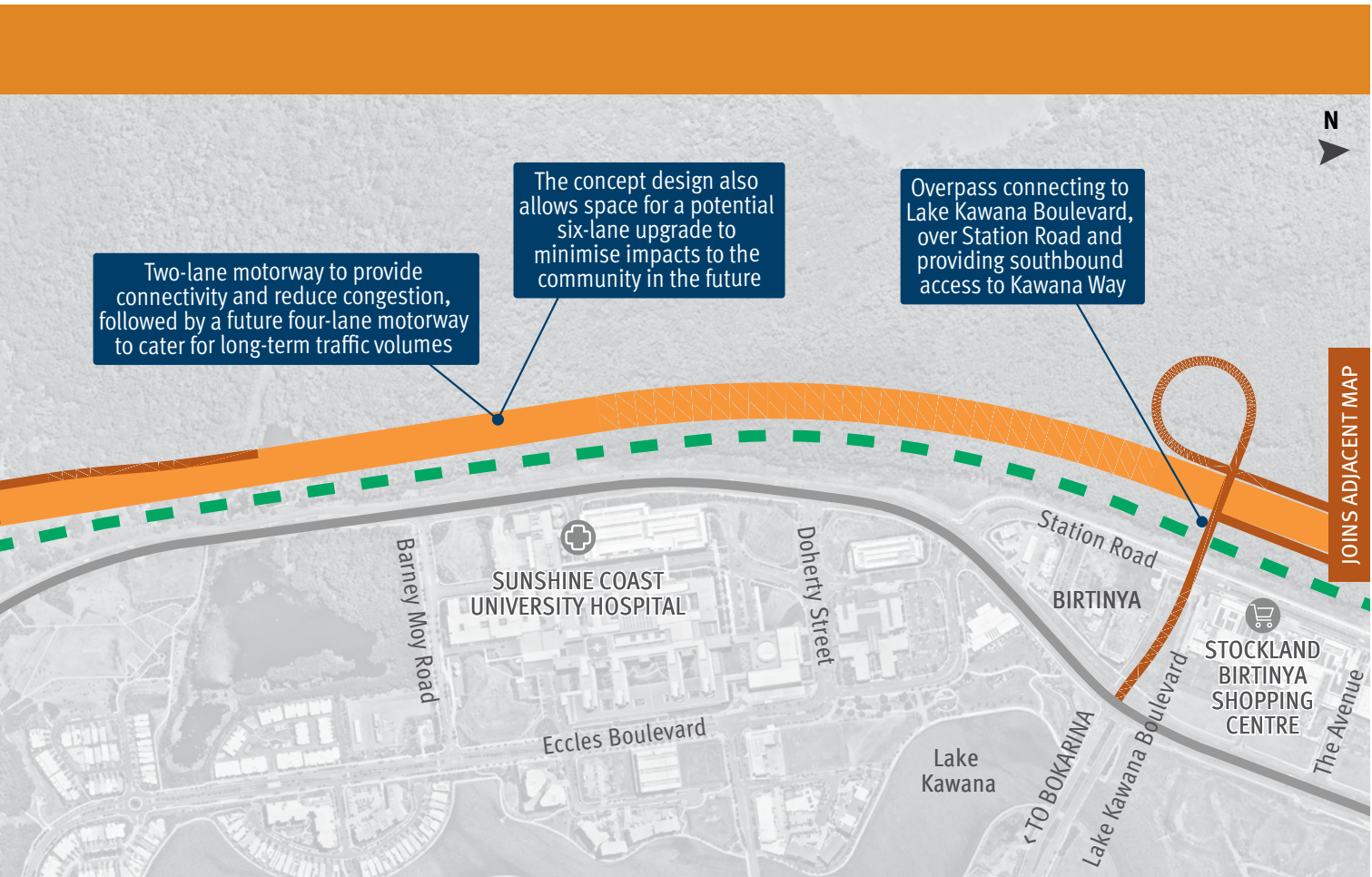


Visit [www.yoursay-projects.tmr.qld.gov.au/kawana-motorway](http://www.yoursay-projects.tmr.qld.gov.au/kawana-motorway) for further information and to have your say.

By 2041, more than half a million people will call the Sunshine Coast their home. That's an increase of around 45 per cent, an additional 160,000 people.

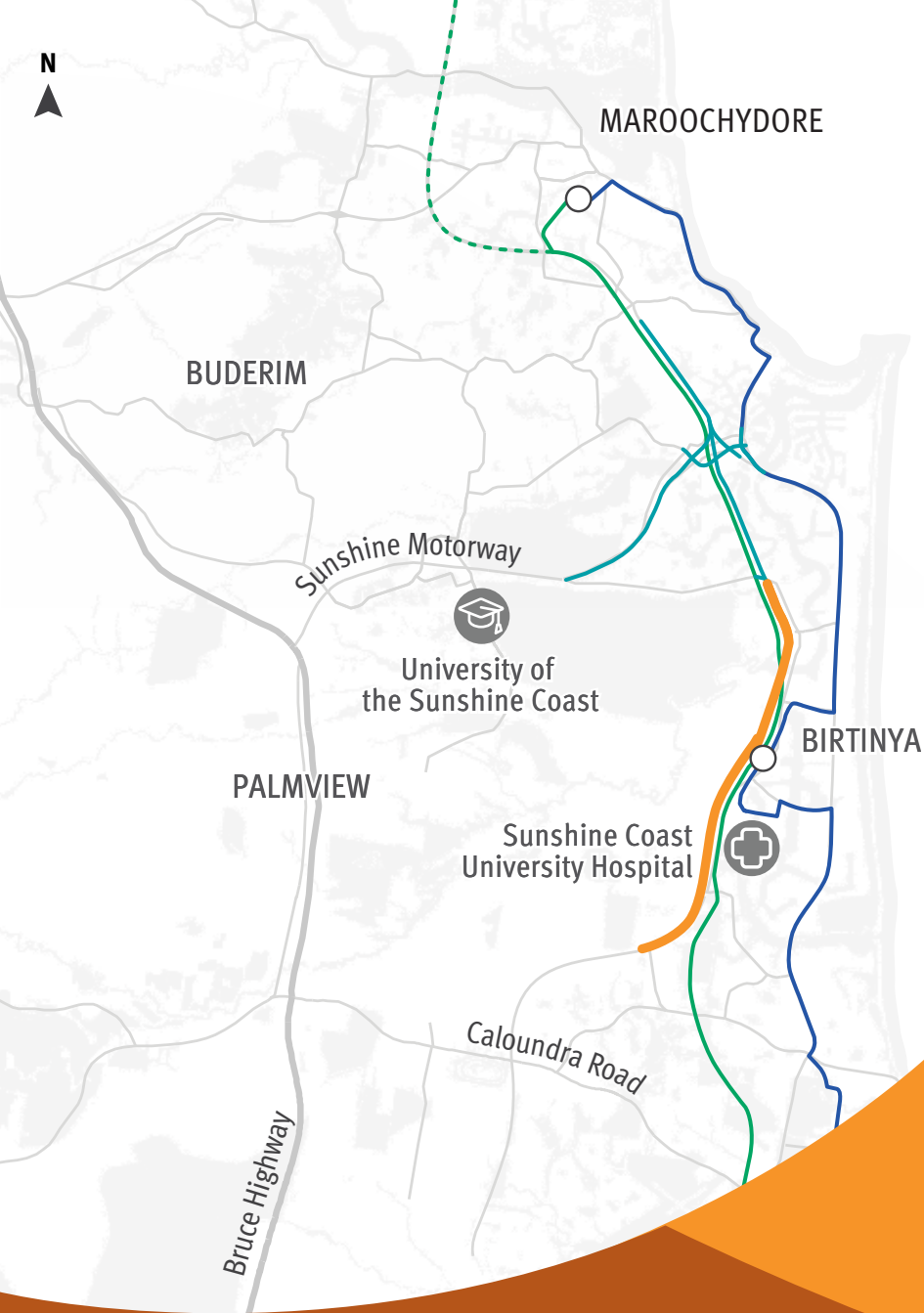
# Kawana Motorway – concept layout





**Legend**

- Kawana Motorway
- Interchanges and connecting roads
- Kawana Way
- Indicative future rail alignment



**LEGEND**

- Kawana Motorway
- Sunshine Motorway, Mooloolah River Interchange Upgrade
- Direct Sunshine Coast Rail Line
- Sunshine Coast Public Transport
- - - Proposed extension

*\*Alignments are indicative only.*



## A north–south motorway connection

This project will form part of a proposed new north–south motorway (Sunshine Motorway, through the new Mooloolah River Interchange, onto Kawana Motorway, Kawana Way Link Road and Bells Creek Arterial Road to the Bruce Highway), a high-speed alternative to the Bruce Highway.

[www.yoursay-projects.tmr.qld.gov.au/sunshine-coast-major-projects](http://www.yoursay-projects.tmr.qld.gov.au/sunshine-coast-major-projects)

### Contact us

- 1800 407 533 (8.30am to 4.30pm)
- [NCR\\_Planning\\_Comms@tmr.qld.gov.au](mailto:NCR_Planning_Comms@tmr.qld.gov.au)
- Kawana Motorway  
Department of Transport and Main Roads  
PO Box 1600  
Maroochydore QLD 4558