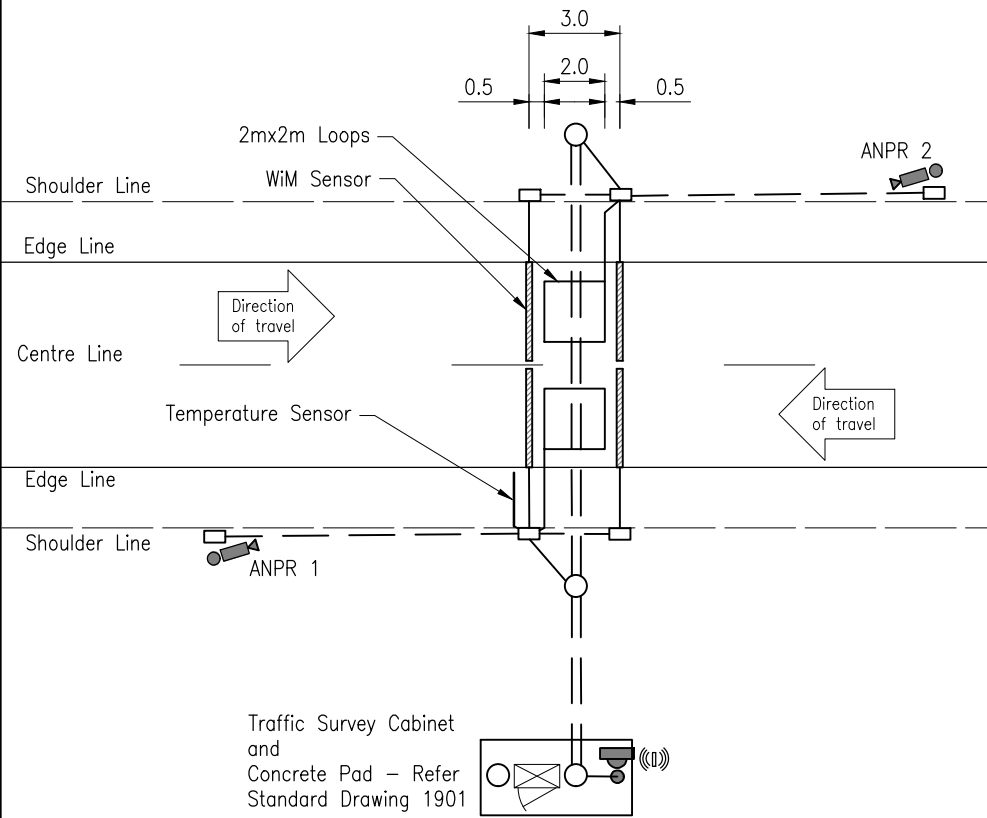
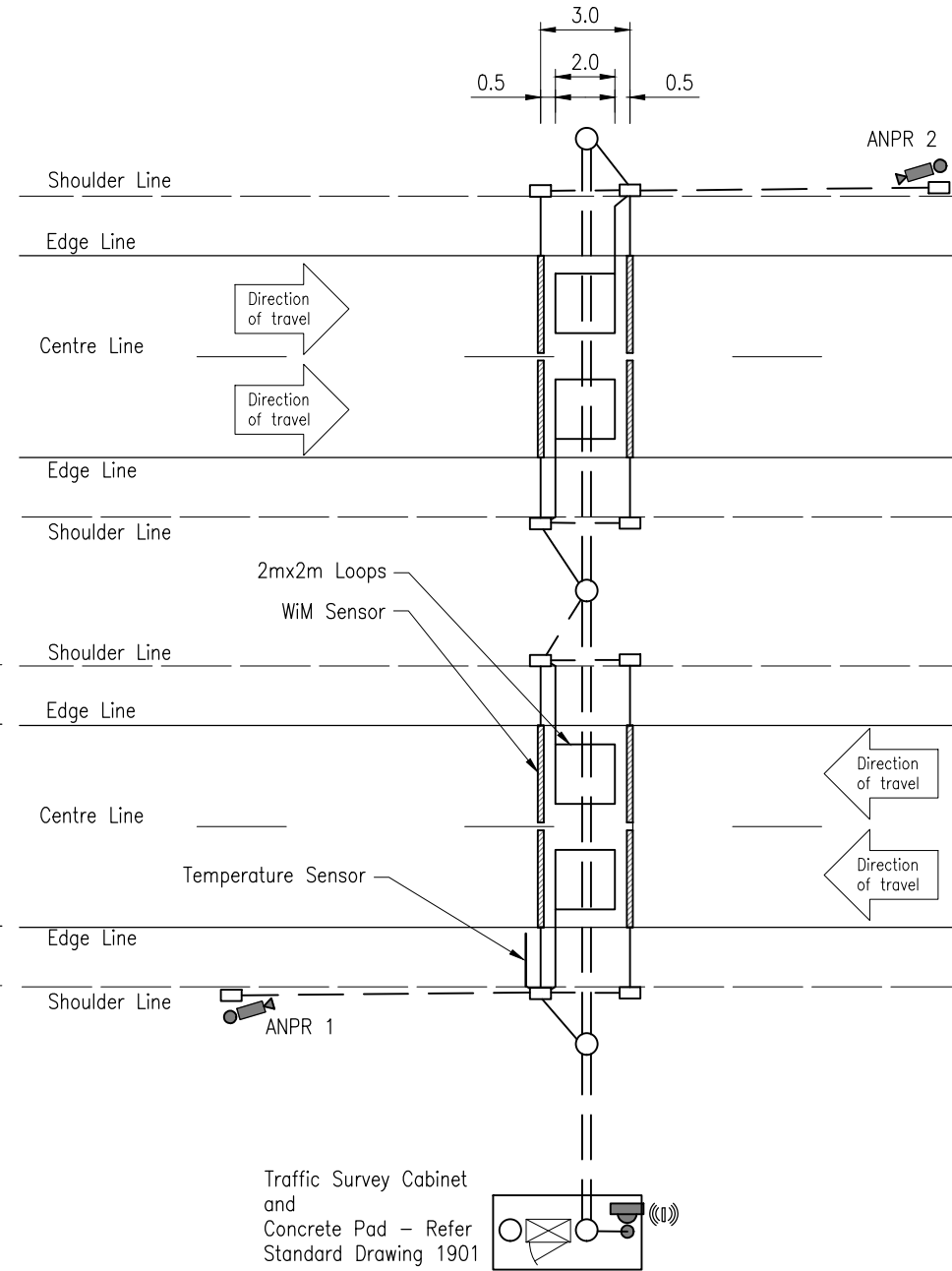


**LEGEND**

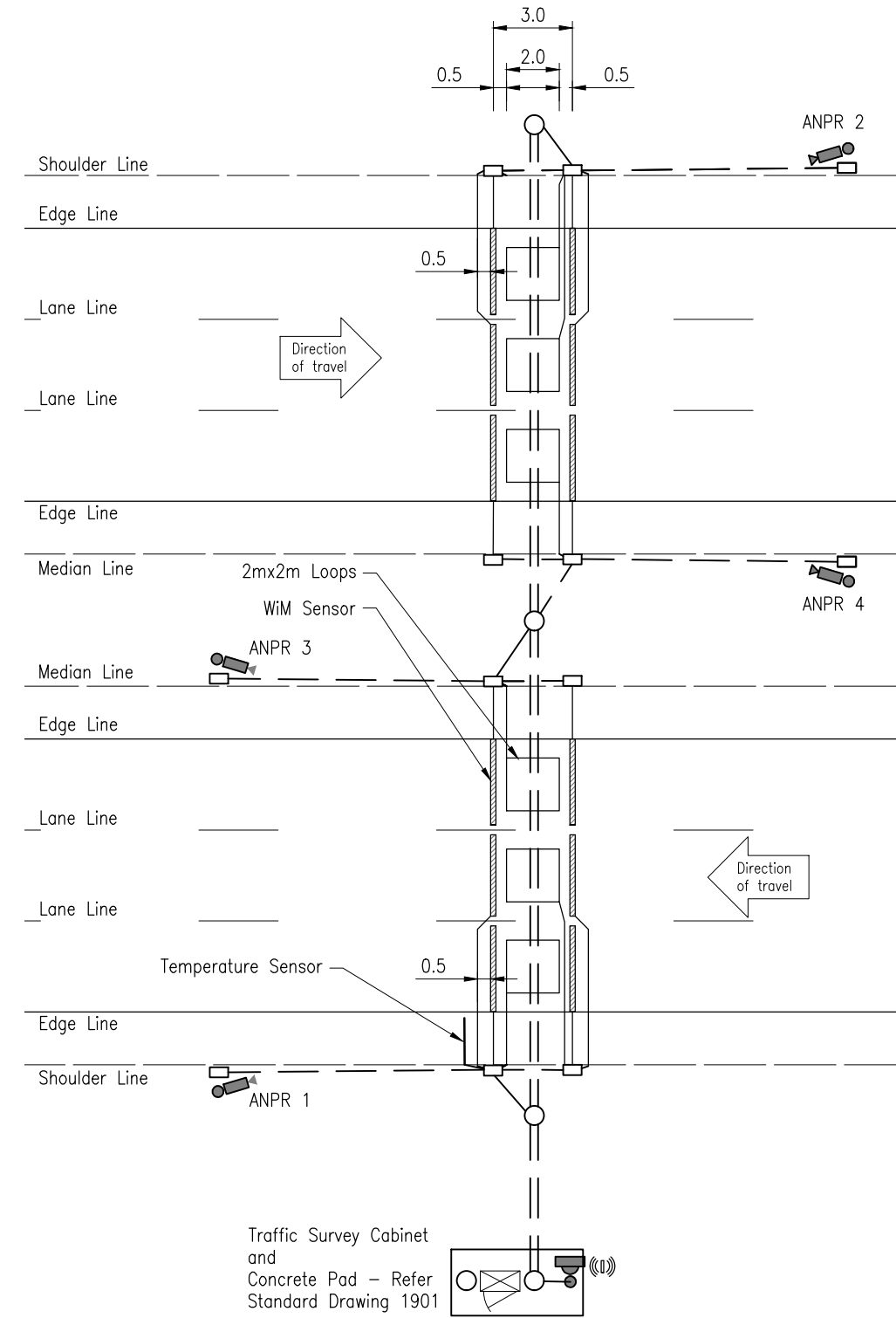
SYMBOL	DESCRIPTION
	ANPR Camera with pole
	PTZ Dome Camera with pole
	Wireless Antenna
	Traffic Survey Cabinet
	Type 4 Pit
	Circular Pit
	1x100 dia conduit (White)
	2x100 dia conduit (White)



**PIEZO-LOOP-PIEZO CONFIGURATION  
SINGLE CARRIAGEWAY DUAL DIRECTION**



**PIEZO-LOOP-PIEZO CONFIGURATION  
DUAL CARRIAGEWAY SINGLE DIRECTION  
2 LANES**

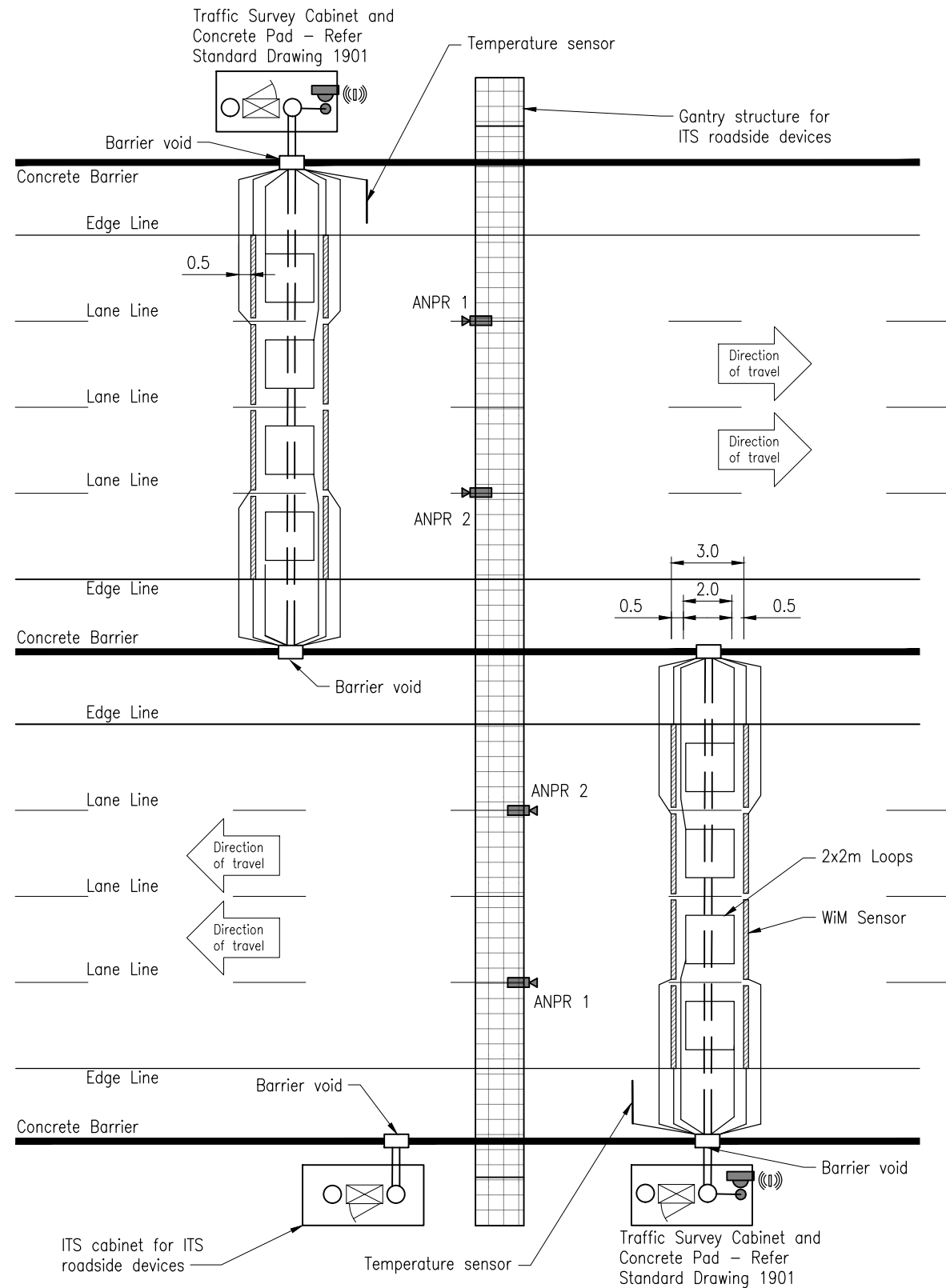


**PIEZO-LOOP-PIEZO CONFIGURATION  
DUAL CARRIAGEWAY SINGLE DIRECTION  
3 LANES**

REFER TO SHEET 2 FOR CONFIGURATION AND PLACEMENT NOTES

**INSTALLATION OF CONDUITS AND PITS IS THE RESPONSIBILITY OF THE LICENSED ELECTRICAL CONTRACTOR**

Department of Transport and Main Roads			
ITS			
WIM SENSOR CONFIGURATION PIEZO-LOOP-PIEZO SHEET 1 OF 2		A3 Not to Scale	Standard Drawing No <b>1908</b> Date 3/2023



PIEZO-LOOP-PIEZO CONFIGURATION  
 DUAL CARRIAGEWAY SINGLE DIRECTION  
 4 LANES WITH GANTRY STRUCTURE

**NOTES:**

1. The WiM sensor can be either a brass linguini (BL) piezo or quartz piezo sensor
2. The WiM sensor is to be assembled and tested prior to delivery at site.
3. Only 1 Traffic Survey cabinet may be used if the longest sensor cable length is less than 100m, otherwise 2 Traffic Survey cabinets are required.
4. All slots for Loop and WiM sensors shall be cut to nearest pit.
5. Where possible, there shall be a minimum 500mm gap between slots cut for sensors and tails.
6. Loops shall be installed centrally between the lane lines.
7. Loop leading and trailing edges shall be perpendicular to the centre line of the road.
8. Loop shoulder and centre line edges shall be parallel to the centre line of the road.
9. WiM sensors shall be installed perpendicular to the centre line of the road.
10. Separation of leading and trailing WiM sensors shall be 3000mm  $\pm$  3mm, measured at the centre of each sensor.
11. Dimensions in metres unless noted otherwise.

ASSOCIATED DEPARTMENTAL DOCUMENTS:

Standard Drawings  
 Specifications

REFERENCED DOCUMENTS:

Departmental Standard Drawings:  
 1901 ITS – Traffic Survey Cabinet Base Installation Details  
 1905 ITS – Traffic Survey Cabinet Typical Details  
 1906 ITS – WiM Piezo Sensor Installation Details

Departmental Specifications:

MRTS203 Provision of Weigh-in-Motion System  
 MRTS207 Traffic Survey Foundation Equipment  
 MRTS250 Provision of Automatic Number Plate Recognition System

**!** INSTALLATION OF CONDUITS AND PITS IS THE RESPONSIBILITY OF THE LICENSED ELECTRICAL CONTRACTOR

Department of Transport and Main Roads		 <small>© The State of Queensland (Department of Transport and Main Roads) 2023  <a href="https://creativecommons.org/licenses/by/4.0/">https://creativecommons.org/licenses/by/4.0/</a></small>	
ITS			
WIM SENSOR CONFIGURATION PIEZO-LOOP-PIEZO SHEET 2 OF 2		A3 Not to Scale	Standard Drawing No <b>1908</b> Date 3/2023
A	B	C	