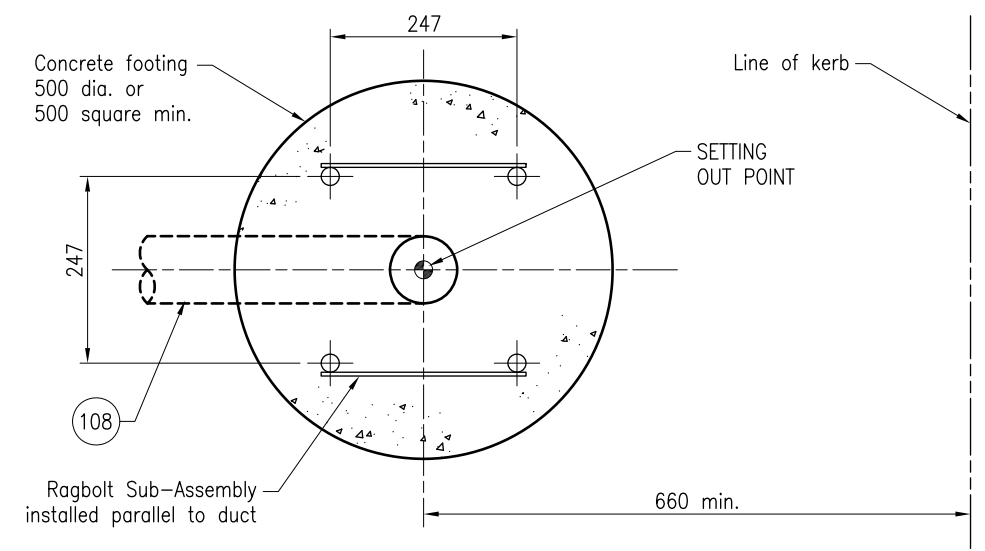


**FOOTING DETAILS**



**RAGBOLT SUB ASSEMBLY AND FOOTING SETTING OUT**

**NOTES:**

- To install post, set on base and adjust to vertical with 4 levelling nuts. Then pack under base plate with mortar rammed under plate.
- Minimum depth of cover to conduit is 600. Only where there is a localised conflict with other underground services may the depth of conduit be decreased to a minimum of 375. In which case the conduit must be protected with a 300 x 75 nominal thick concrete capping layer. The Superintendent must give written approval for this departure from the standard.
- Footing depth requirements:

Approx Footing depth required	Conduit cover	Type of post
800	600	Traffic Signal Post
800	300 (to concrete capping)	
600	600	Pedestrian pushbutton post, Bicycle pushbutton post, Switchboard (top mounted) post, PE Cell post.
600	300 (to concrete capping)	

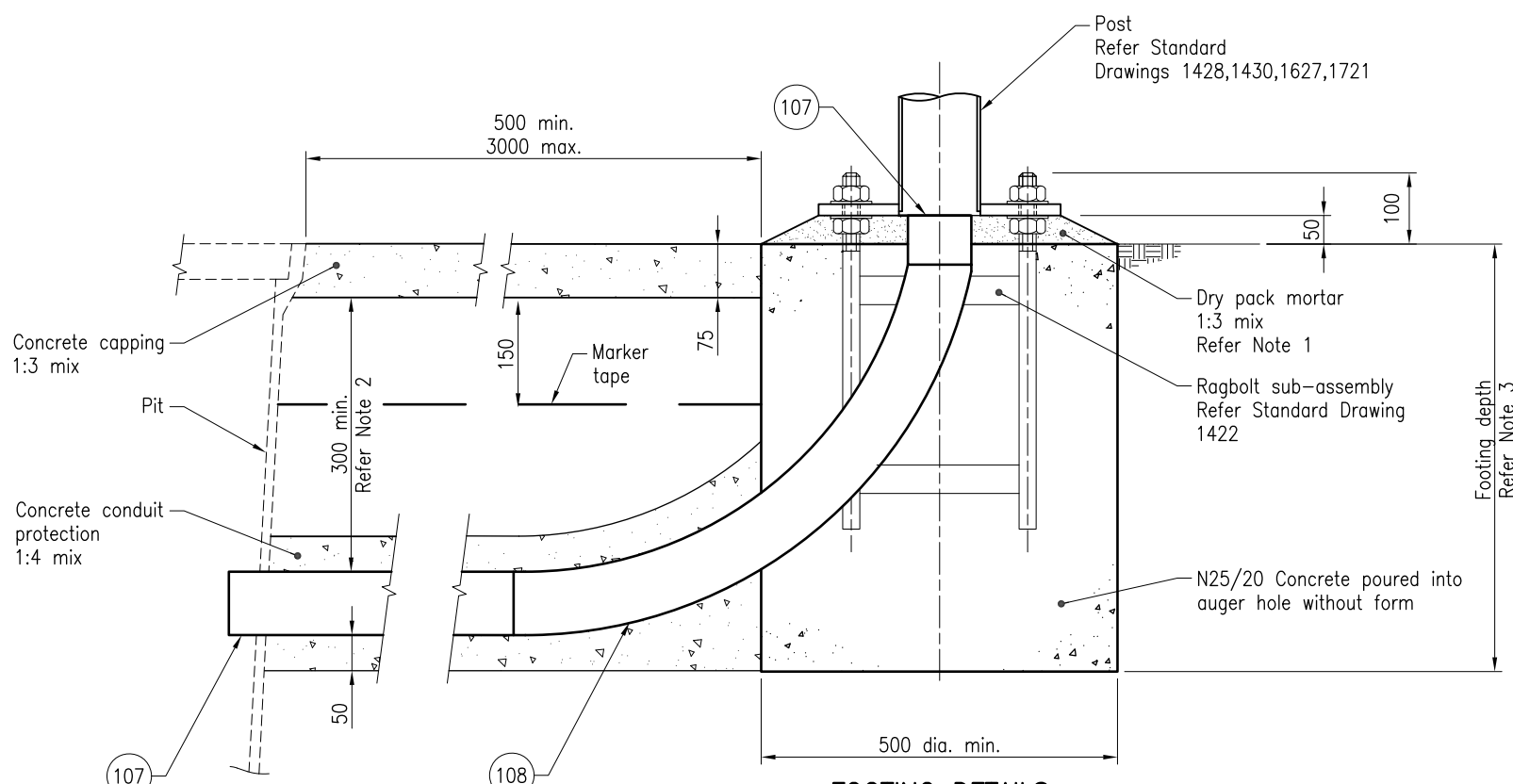
- Threads to be protected and conduits plugged before pouring concrete.
- For Switchboard (top mounted) post, footing to include provision for conduit for earth cable per SD1627
- Dimensions are in millimetres unless shown otherwise.

**ASSOCIATED DEPARTMENTAL DOCUMENTS:**

- Standard Drawings
- Specifications

**REFERENCED DOCUMENTS:**

- Departmental Standard Drawings:
- 1420 Traffic Signals – General Arrangements
  - 1422 Traffic Signals – Ragbolt Sub-Assembly Fabrication Details
  - 1428 Traffic Signals – Traffic Signal Post Base Mounted
  - 1627 Road Lighting – Switchboard Top Mounted
  - 1699 Traffic Signals/Road Lighting/ITS – Parts List
  - 1721 Traffic Signals – Base Mounted Traffic Signals Post – Assembly and Details
- Departmental Specifications:
- MRTS91 Conduits and Pits
  - MRTS92 Traffic Signal and Road Lighting Footings
  - MRTS93 Traffic Signals
- Australian Standards:
- AS/NZS 3000 Electrical Installations (Wiring Rules)



**FOOTING DETAILS**  
Localised conflicts only  
Refer Note 2

Department of Transport and Main Roads			
TRAFFIC SIGNALS			
TRAFFIC SIGNALS POST AND FOOTING INSTALLATION DETAILS		A3 Not to Scale	Standard Drawing No <b>1421</b> Date 11/2020