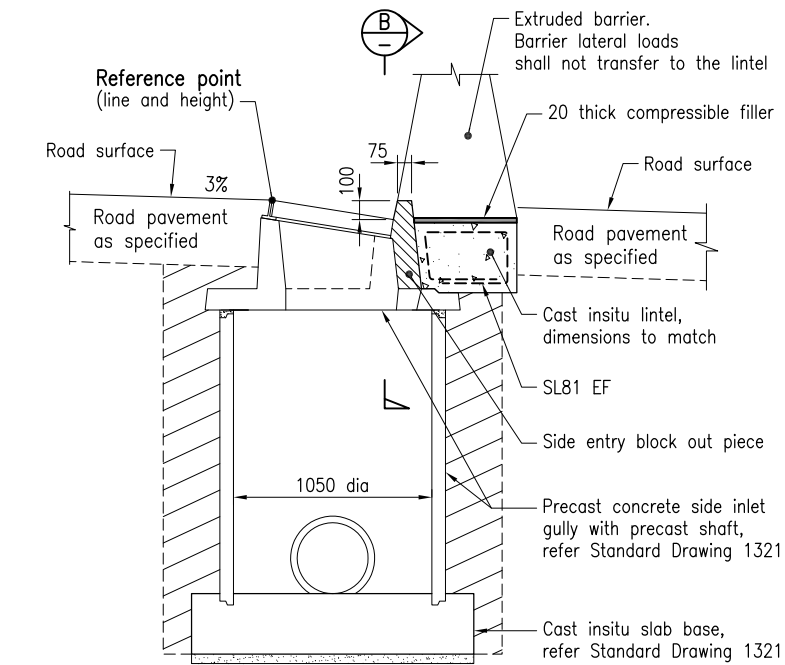
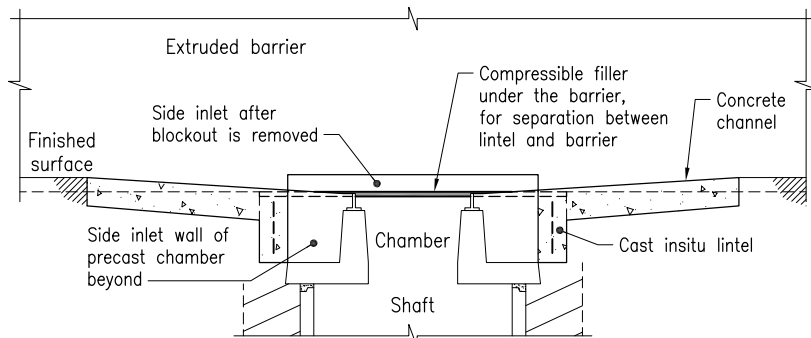


TYPICAL PLAN

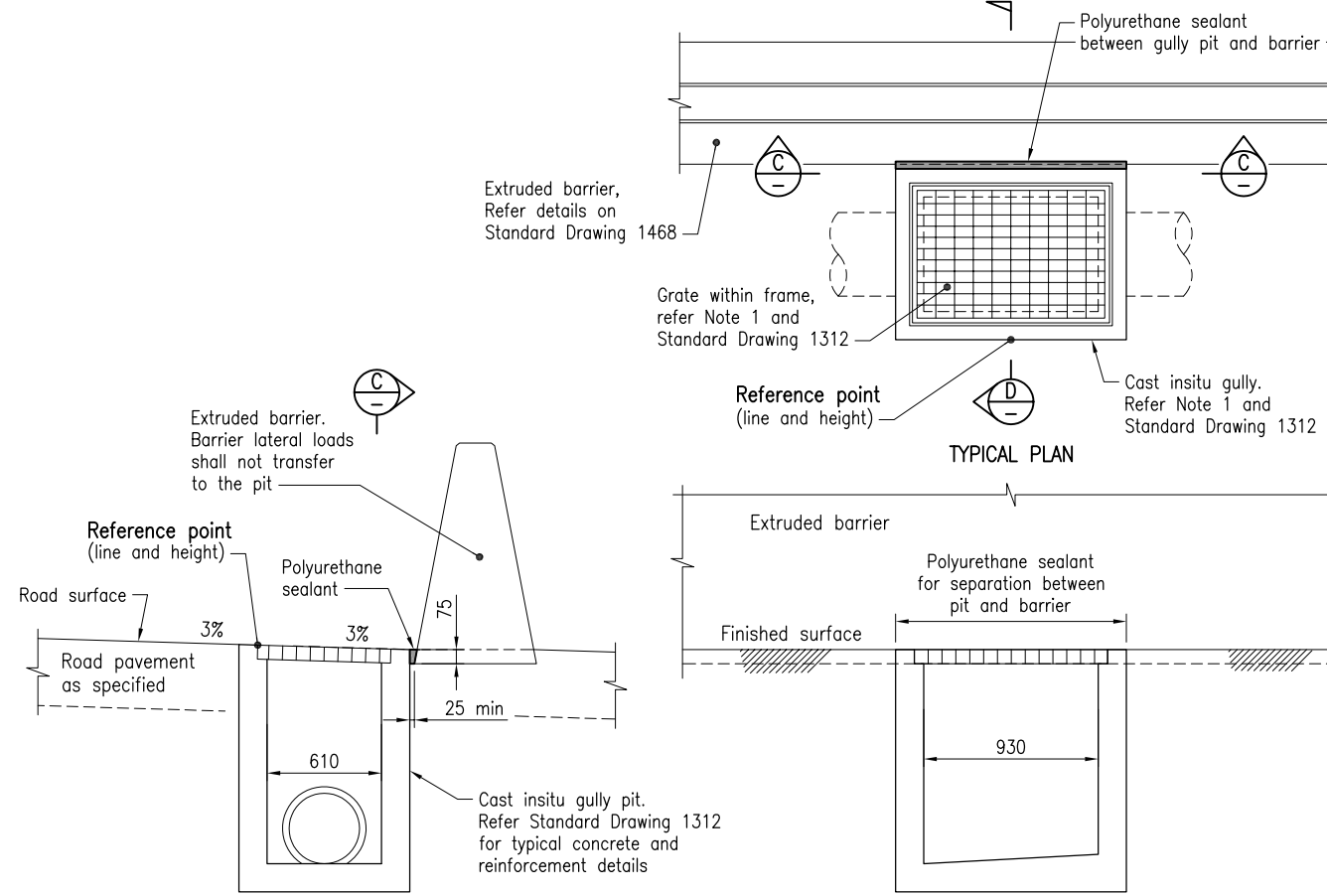


SECTION A



SECTION B

PRECAST SIDE INLET GULLY WITH CAST INSITU LINTEL

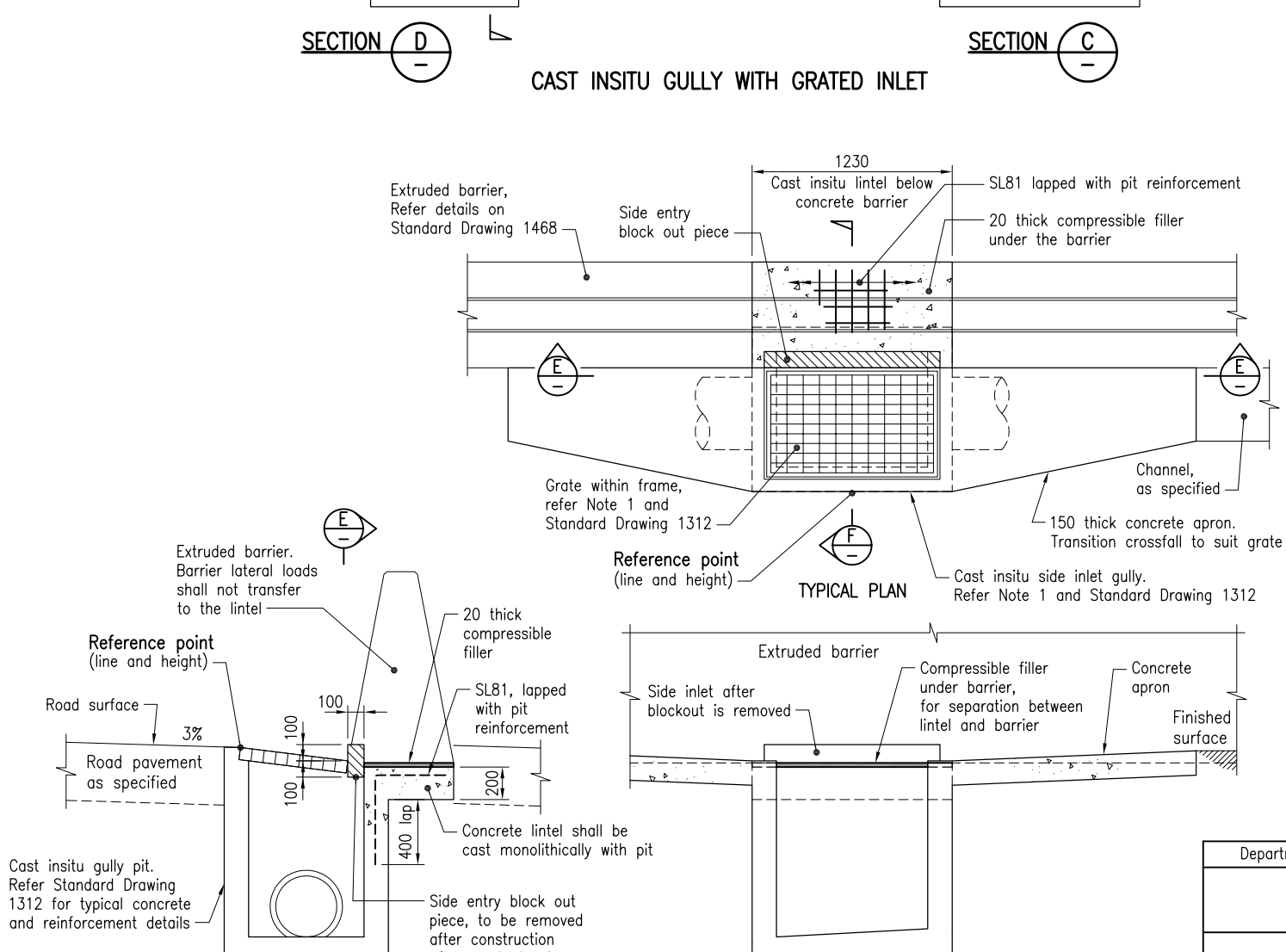


TYPICAL PLAN

SECTION D

SECTION C

CAST INSITU GULLY WITH GRATED INLET



TYPICAL PLAN

SECTION F

SECTION E

CAST INSITU SIDE INLET GULLY

The purpose of This Standard Drawing is to provide typical standard details. The fitness for purpose of these details for a specific project shall be designed and certified by an RPEQ. The details specific to the project location shall be shown on the project specific drawings.

**NOTES:**

- SCOPE: This Standard Drawing provides details for concrete roadway type gullies at concrete barriers. Concrete inlet gullies shown on this drawing shall be in accordance with MRTS03. Cast insitu concrete and precast pits are not detailed in this standard drawing. Refer Standard Drawing 1312 and Standard Drawing 1321 respectively.
- CONCRETE shall be in accordance with MRTS70. Cast insitu lintels S32/20. Exposure classification B1 to AS 3600. Minimum cover to reinforcement shall be 40. Refer to the relevant standard drawing for all other concrete notes.
- REINFORCING STEEL shall be in accordance with Standard Drawing 1044 and with MRTS71 and AS/NZS 4671. Mesh Grade D500L. All reinforcing steel shall be ACRS certified.
- DIMENSIONS are in millimetres.

**ASSOCIATED DEPARTMENTAL DOCUMENTS:**

Road Drainage Manual

**REFERENCED DOCUMENTS:**

Departmental Standard Drawings:

- 1312 Concrete Gully – Roadway Type Kerb in Line
- 1321 Concrete Gully – Precast Concrete Side Inlet Gully with Precast Shaft

Departmental Specifications:

- MRTS03 Drainage, Retaining Structures and Protective Treatments
- MRTS70 Concrete
- MRTS71 Reinforcing Steel

Department of Transport and Main Roads				© The State of Queensland (Department of Transport and Main Roads) 2018 <a href="http://creativecommons.org/licenses/by/3.0/au">http://creativecommons.org/licenses/by/3.0/au</a>	
CONCRETE GULLIES				A3	Standard Drawing No
ROADWAY TYPE AT CONCRETE BARRIERS		Not to Scale	1442		Date 7/18
A	B				