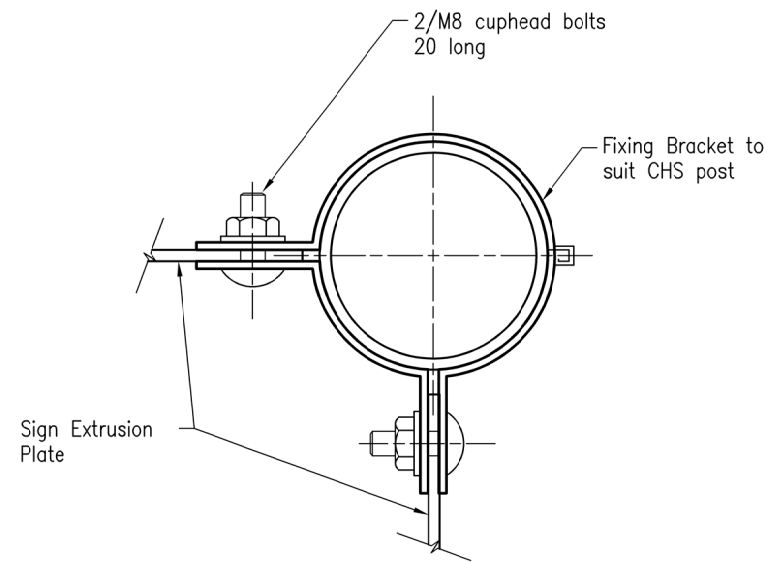
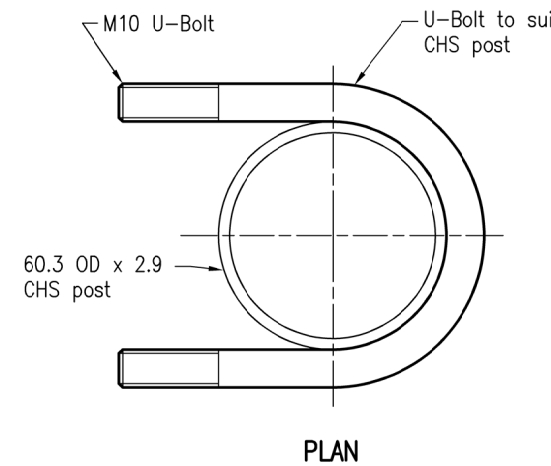


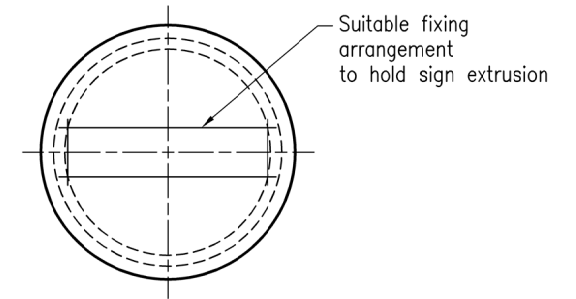
SECTION A



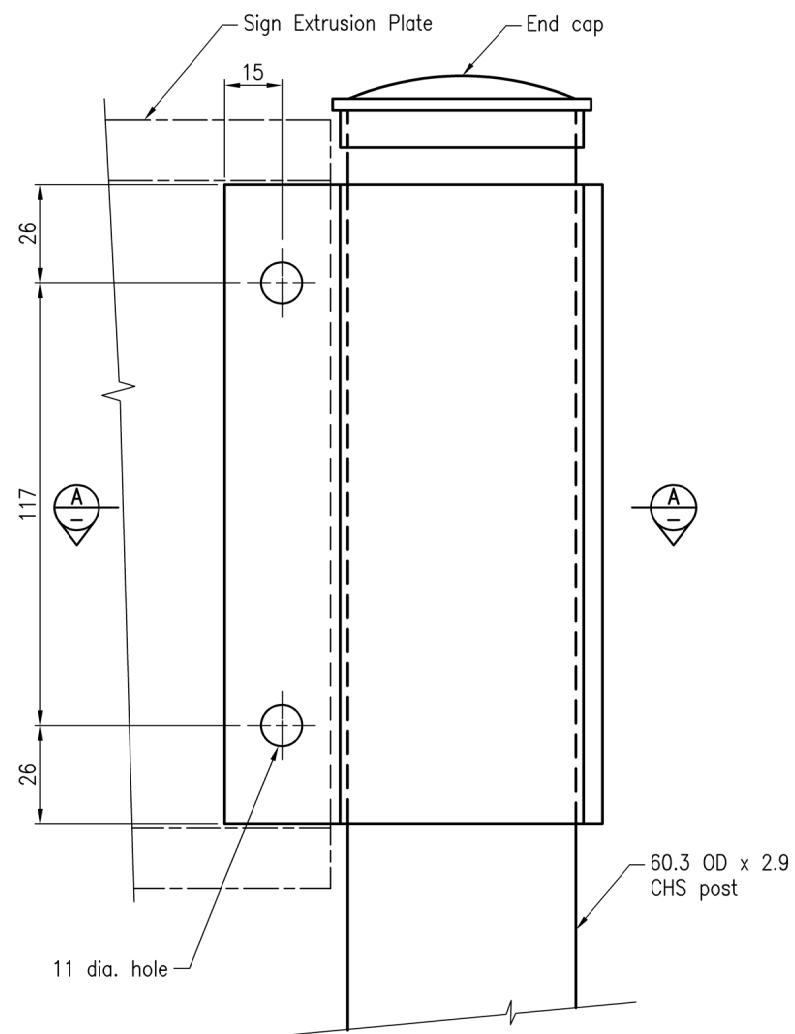
SECTION B



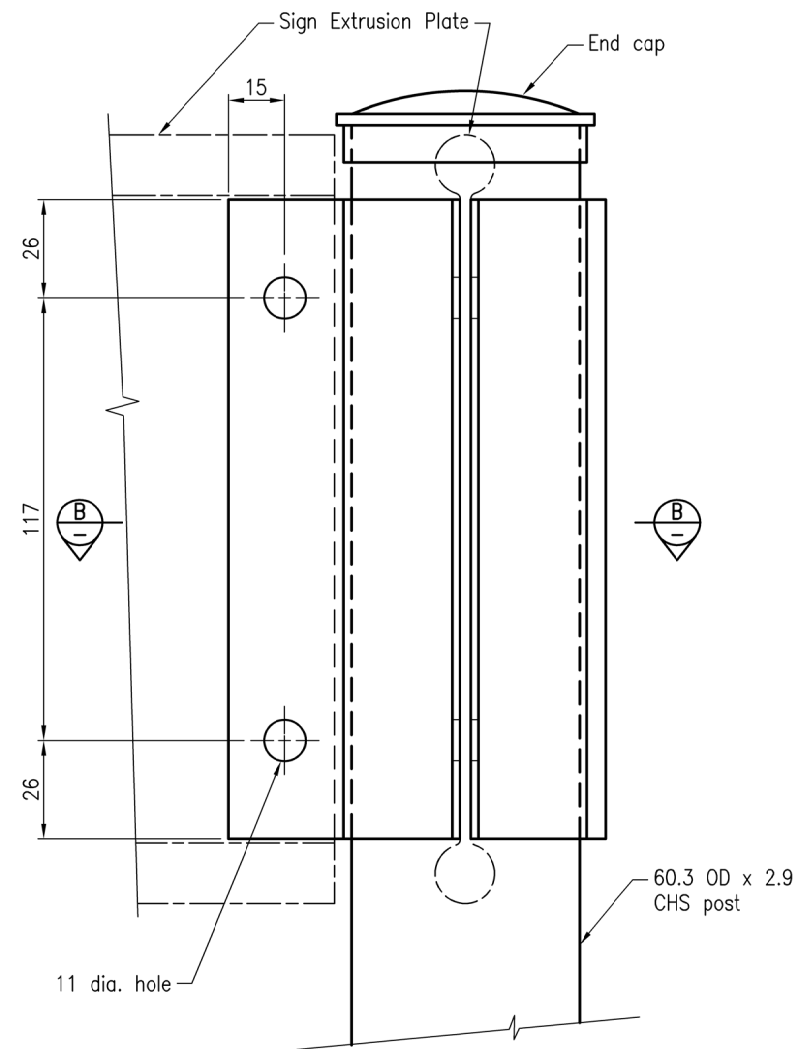
PLAN



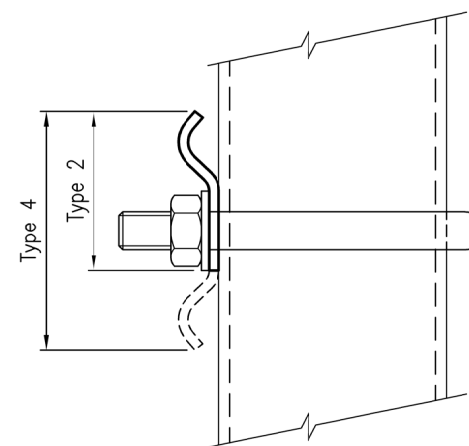
PLAN



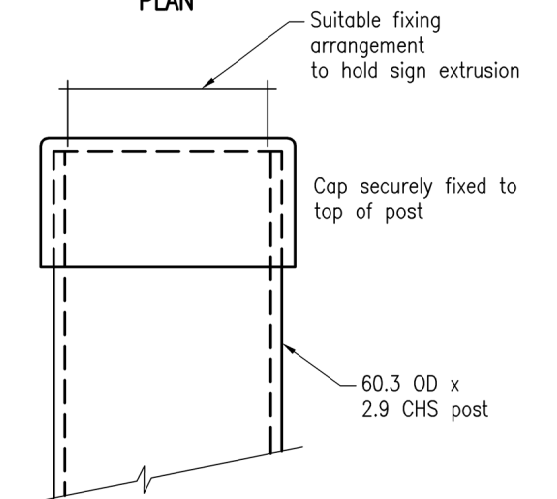
ELEVATION TYPE 1



ELEVATION TYPE 5



ELEVATION ASSEMBLY DETAIL



ELEVATION TYPE 3

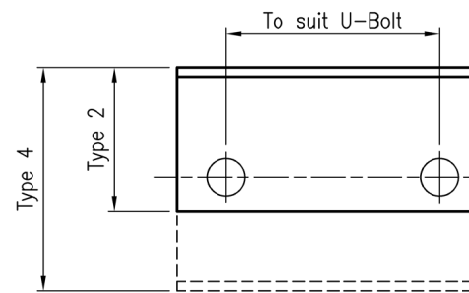


PLATE DETAIL (Shape to suit and hold sign extrusion firmly) TYPE 2 and 4

NOTES:

1. Circular hollow sections (CHS) to be grade C350LO to AS/NZS 1163 unless noted otherwise.
2. Bolts, Nuts, and washers to be hot-dip galvanised to AS/NZS 1214.
3. All Steelwork and Fittings to be hot-dip galvanised to AS/NZS 4680.
4. Dimensions are in millimeters, unless shown otherwise.

ASSOCIATED DEPARTMENTAL DOCUMENTS:



- Standard Drawings
- Specifications

REFERENCED DOCUMENTS:

- Departmental Specifications:
- MRST14 Road Furniture
 - MRTS78 Fabrication of Structural Steelwork

Australian Standards:

- AS/NZS 1163 Cold-Formed Structural Steel Hollow Sections
- AS/NZS 1214 Hot-Dip Galvanised Coatings on Threaded Fasteners (ISO metric course thread series)
- AS/NZS 4680 Hot-Dip Galvanised (zinc) Coatings on Fabricated Ferrous Articles

Department of Transport and Main Roads		 <small>© The State of Queensland (Department of Transport and Main Roads) 2022 http://creativecommons.org/licenses/by/4.0/</small>	
SIGN			
FINGERBOARD, GEOGRAPHICAL FEATURE AND STREET NAME SIGN BRACKET DETAILS		A3	Standard Drawing No
		Not to Scale	1295
			Date 11/2022
		A	B