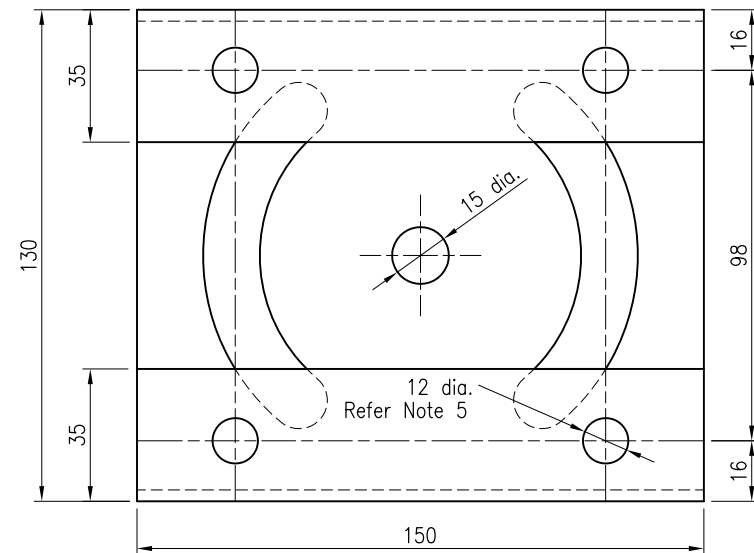
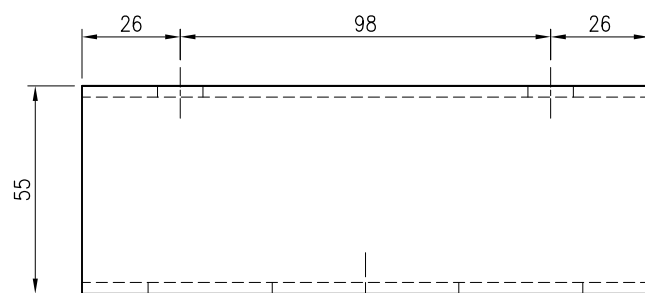


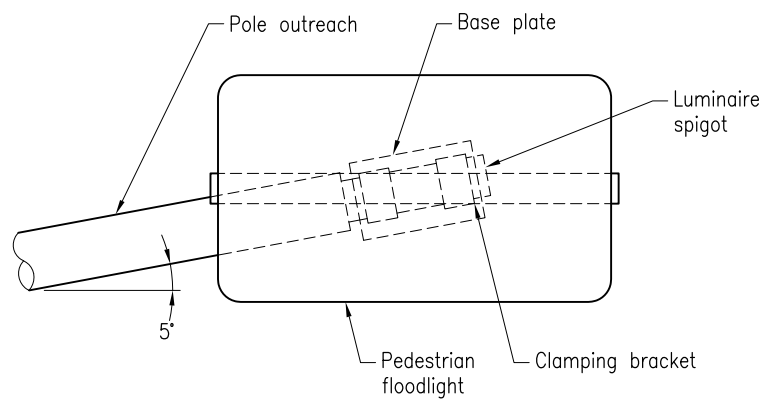
END ELEVATION



PLAN

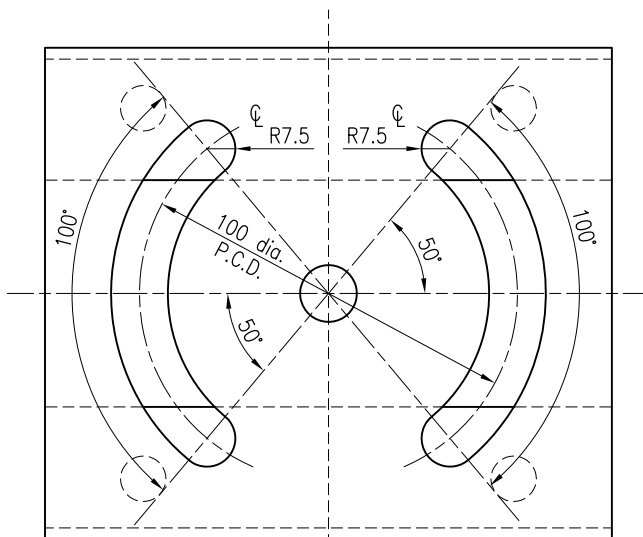


ELEVATION

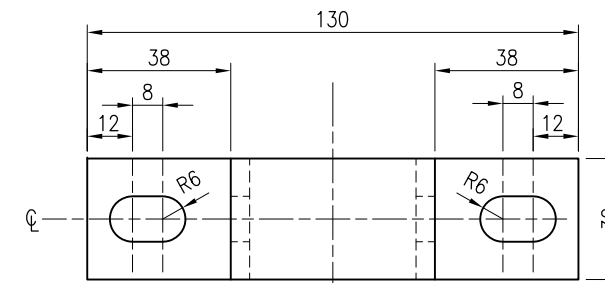


GENERAL ARRANGEMENT

Floodlight mounted on luminaire spigot when no road lighting luminaire installed

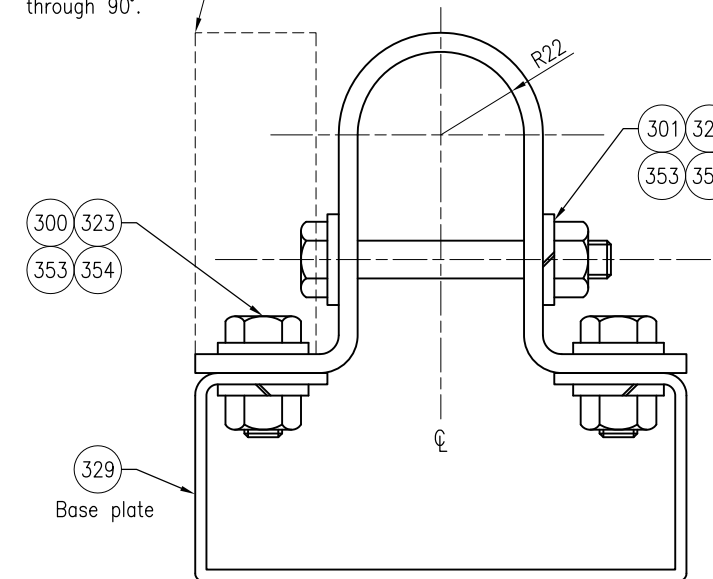


INVERTED PLAN
BASE PLATE

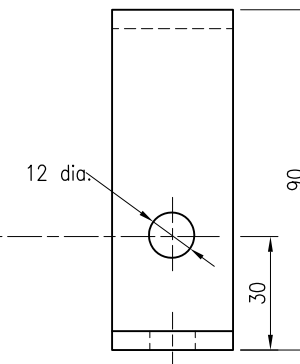


PLAN

Alternative position may be used to adjust fixing through 90°.



ELEVATION
CLAMPING BRACKET



END ELEVATION

ASSOCIATED DEPARTMENTAL DOCUMENTS:

Standard Drawings

REFERENCED DOCUMENTS:

Departmental Standard Drawings:
1699 Traffic Signals/Road Lighting/ITS - Parts List

Australian Standards:

AS 1214 Hot-dip galvanized coatings on threaded fasteners (ISO metric coarse thread series)
AS/NZS 4680 Hot-dip galvanized (zinc) coatings on fabricated ferrous articles

NOTES:

- MATERIAL
 - base plate - 3 millimetres MS plate material.
 - clamping bracket - 5 millimetres MS plate.
- FINISH
 - base plate, clamping bracket and washers - hot dip galvanized to AS/NZS 4680.
 - nuts and bolts - hot dip galvanized to AS 1214.
- BENDING RADII
 - to be minimum radius, except where shown.
- TOLERANCE ± 1 .
- 4 x 12 diameter locating holes to be drilled after bending of base plate.
- Dimensions are in millimetres unless shown otherwise.

Department of Transport and Main Roads			
ROAD LIGHTING			
PEDESTRIAN CROSSING FLOODLIGHT MOUNTING BRACKET SPIGOT MOUNT (OPTION 1)		A3 Not to Scale	Standard Drawing No 1336 Date 7/15
A	B	C	D
E	F	G	