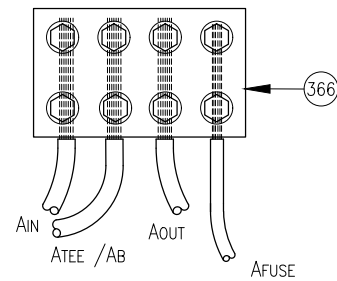
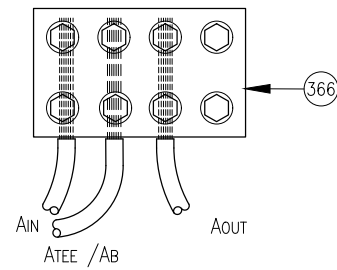


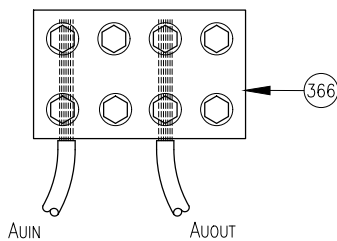
Detail A  
Pole Active



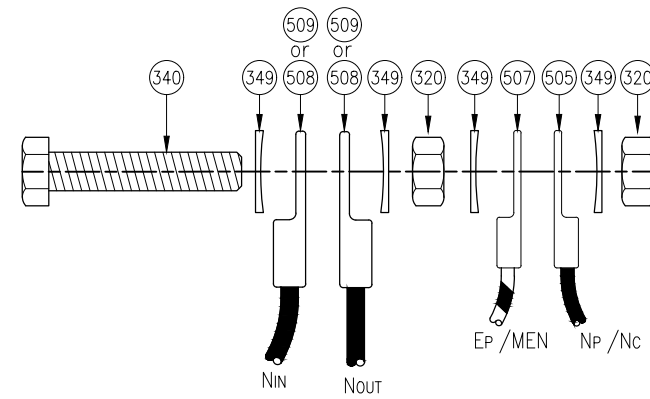
Detail B  
Pole Active with Tee-Off



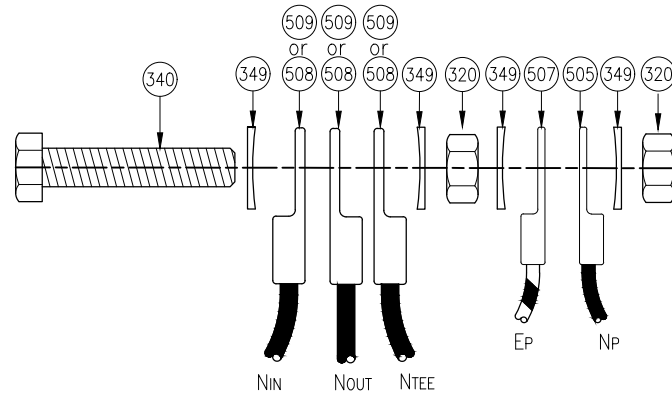
Detail C  
Active Tee-Off



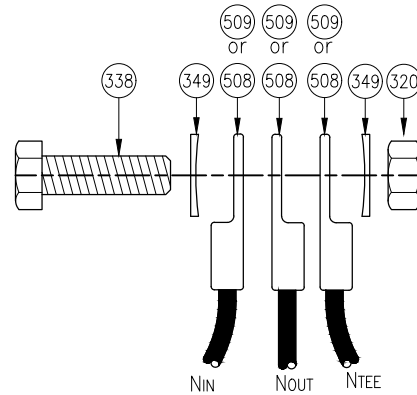
Detail D  
Three Phase Unused Active



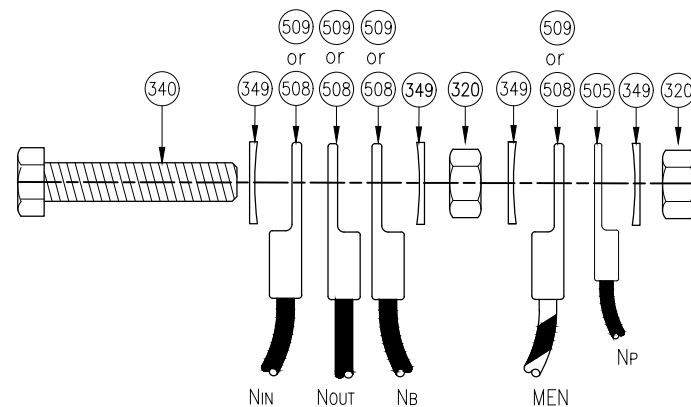
Detail E  
Pole Neutral/Subcircuit



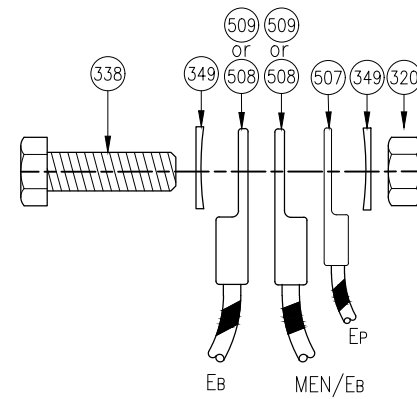
Detail F  
Pole Neutral with Tee-Off



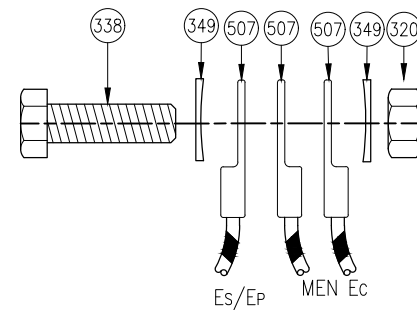
Detail G  
Neutral Tee-Off



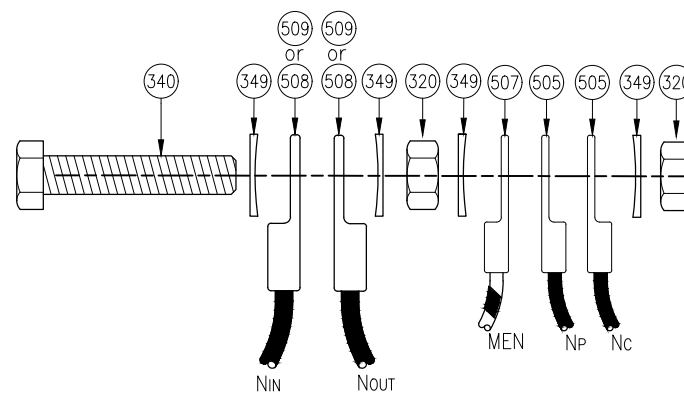
Detail H  
Pole Neutral with Bridge Tee-Off



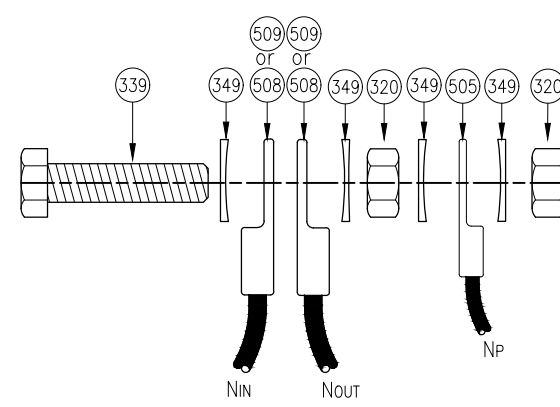
Detail I  
Bridge Earth



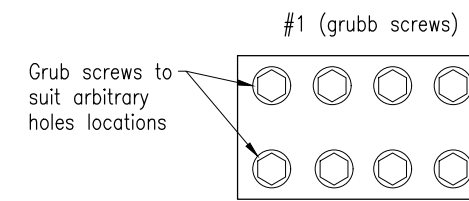
Detail J  
Subcircuit Connection



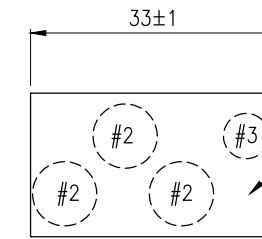
Detail K  
Subcircuit Connection



Detail L  
Pole Neutral

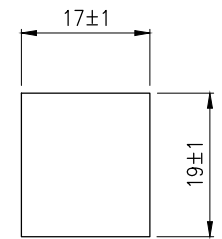


TOP VIEW



FRONT VIEW

Penetrations	
#1	Brass grub screw (2mm allen key)
#2	9±0.5mm dia x 3 holes
#3	6±0.5m dia x 1 holes



SIDE VIEW

DETAIL 1  
BRASS CONNECTOR BLOCK

LEGEND	
AB	Active Bridge
AFUSE	Active to Fuse
AIN	Active In
AOUT	Active Out
ATEE	Active Tee Off
AUN	Active 3 Phase Unused In
AUOUT	Active 3 Phase Unused Out
EB	Earth Bridge
Ec	Earth Subcircuit
EP	Earth Pole
Es	Earth Stake
MEN	MEN Link
NB	Neutral Bridge
Nc	Neutral Subcircuit
NIN	Neutral In
NOUT	Neutral Out
NP	Neutral Pole
NTEE	Neutral Tee Off

NOTES:

- Torque on nuts of assembly to be approximately 20Nm. Use a digital torque wrench or ring spanner to tighten. Lubricated/oiled components or power tool based fastening are not accepted.

- Connect MEN Link only after correct polarity has been established.

- Use Belleville washers for spacers if required.

ASSOCIATED DEPARTMENTAL DOCUMENTS:

- Standard Drawings Specifications
- Traffic and Road Use Management Manual (TRUM) - Volume 4 Part 4 Road Lighting Dome Junction Box Assembly

REFERENCED DOCUMENTS:

- Departmental Standard Drawings: 1699 Traffic Signals/Road Lighting/ITS - Parts List
- Australian Standards: AS/NZS 3000 Electrical Installations (Wiring Rules)

Department of Transport and Main Roads			
ROAD LIGHTING			
JUNCTION BOX ACTIVE, NEUTRAL AND EARTH BOLTING ARRANGEMENTS		A3 Not to Scale	Standard Drawing No <b>1626</b> Date 7/2022