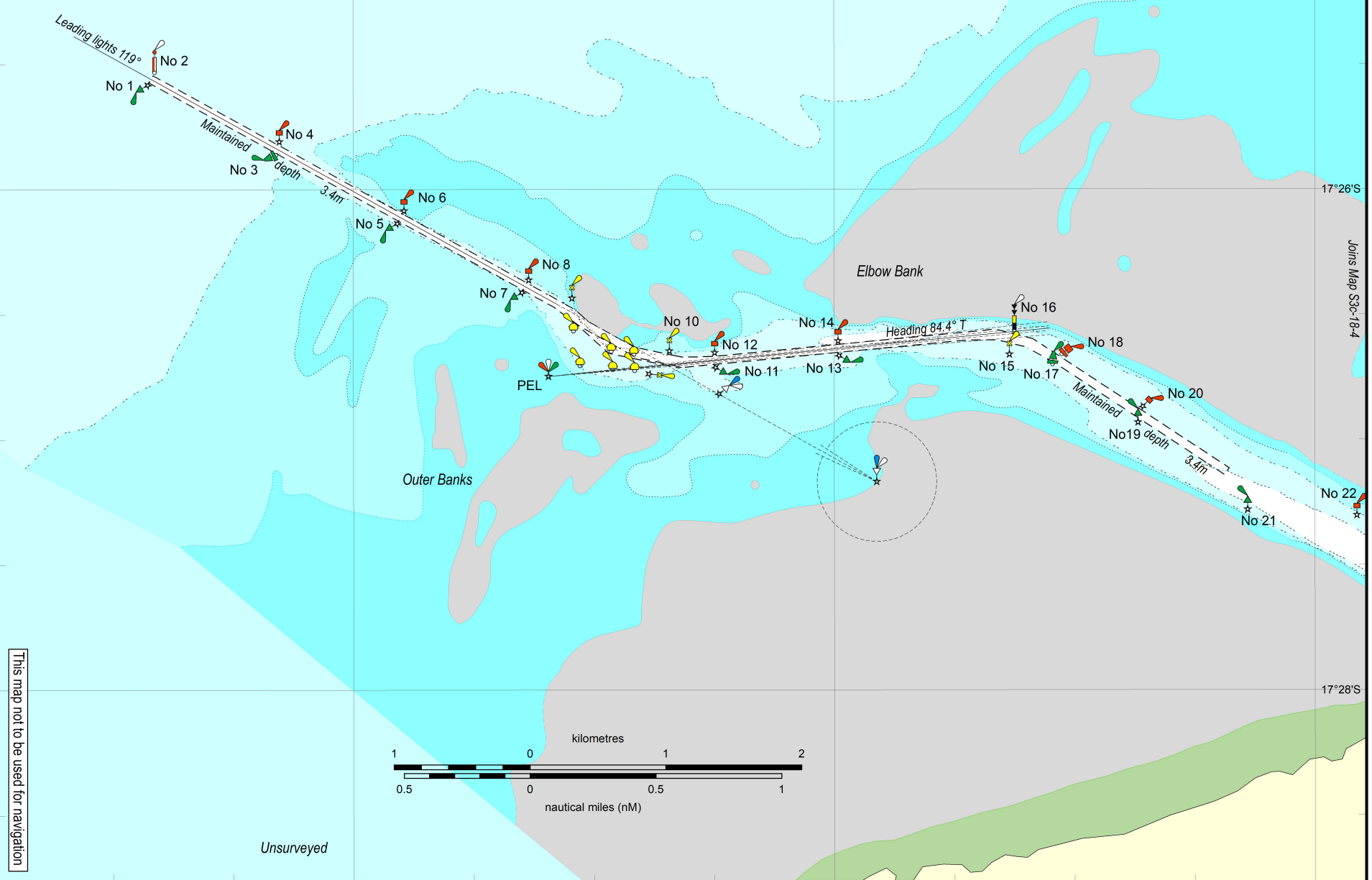


140°44'E 140°46'E 140°48'E



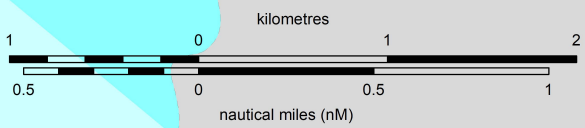
Pilot boarding ground
(17° 24.9'S, 140° 42.6'E)



Joins Map S3c-18-4

17°26'S

17°28'S



Unsurveyed

This map not to be used for navigation

Map S3c-17-5

Horizontal datum: GDA94

Projection: UTM (Zone 54)

Prepared 12 July 2021
Maritime Safety Queensland
Spatial Services

PORT PROCEDURES MANUAL

PORT OF KARUMBA

Pilot boarding ground

© The State of Queensland 2021
(Transport and Main Roads)

Queensland Government